

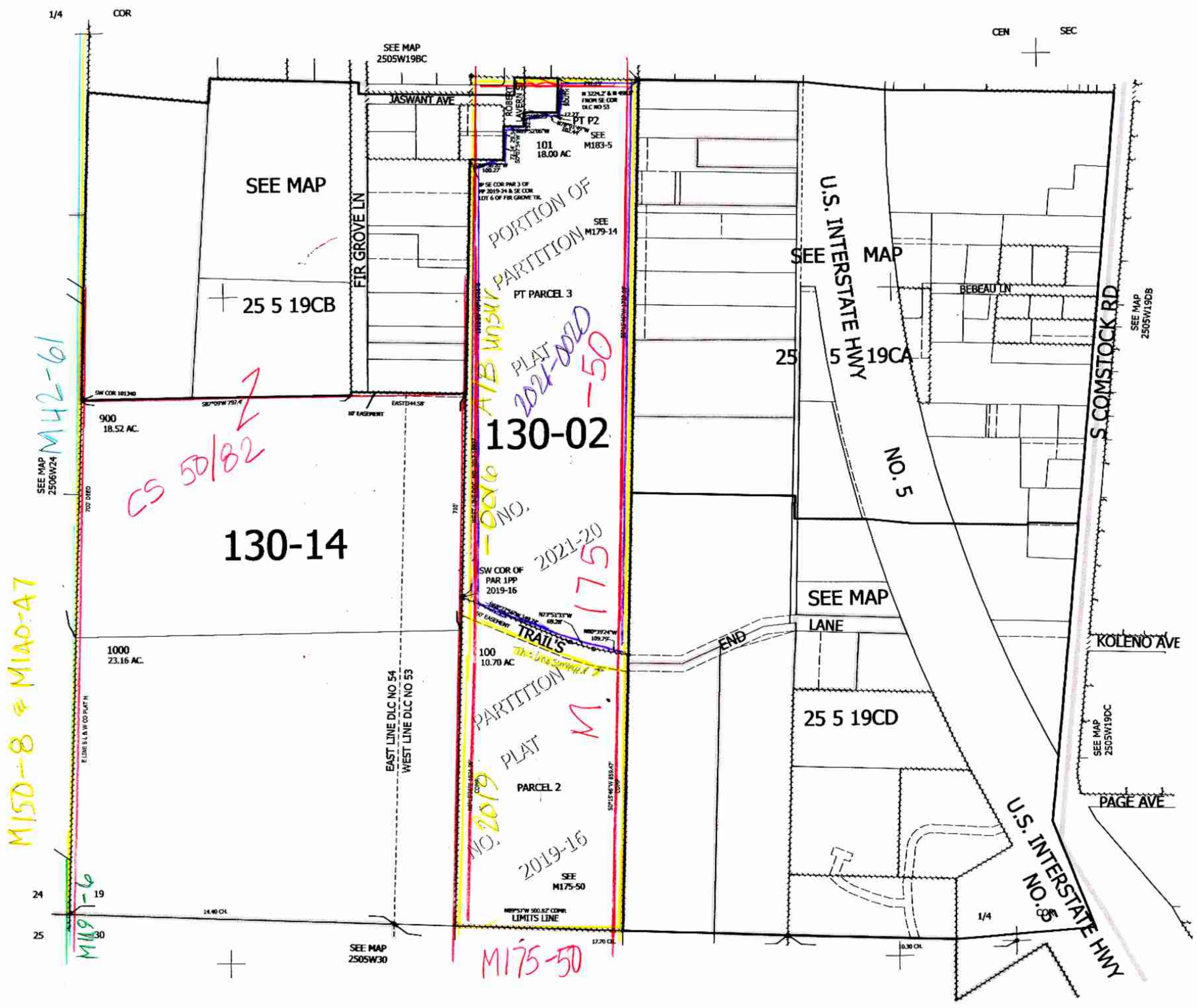
THIS MAP WAS PREPARED FOR ASSESSMENT PURPOSE ONLY.

Upper Left: 123°20'54"W 43°22'56"N 4164215E 638053N ft

SW1/4 SEC.19 T.25S. R.05W. W.M. DOUGLAS COUNTY 1" = 200'

INDEX Sutherland

- CANCELLED NOS:
- 204 102 106
- 107 108 103
- 104 105 200
- 201 202 203
- 300 400 401
- 500 600 700
- 800



6/2024 81
5/2/20

Lower Right: 123°19'59"W 43°22'23"N 4168140E 634576N ft

250519C & INDEX Sutherland