

THIS MAP WAS PREPARED FOR ASSESSMENT PURPOSE ONLY.

SW1/4 NW1/4 SEC.19 T.25S. R.5W. W.M. DOUGLAS COUNTY

REVISED ON 4-4-22

25 5 19BC SUTHERLIN

1/16 COR

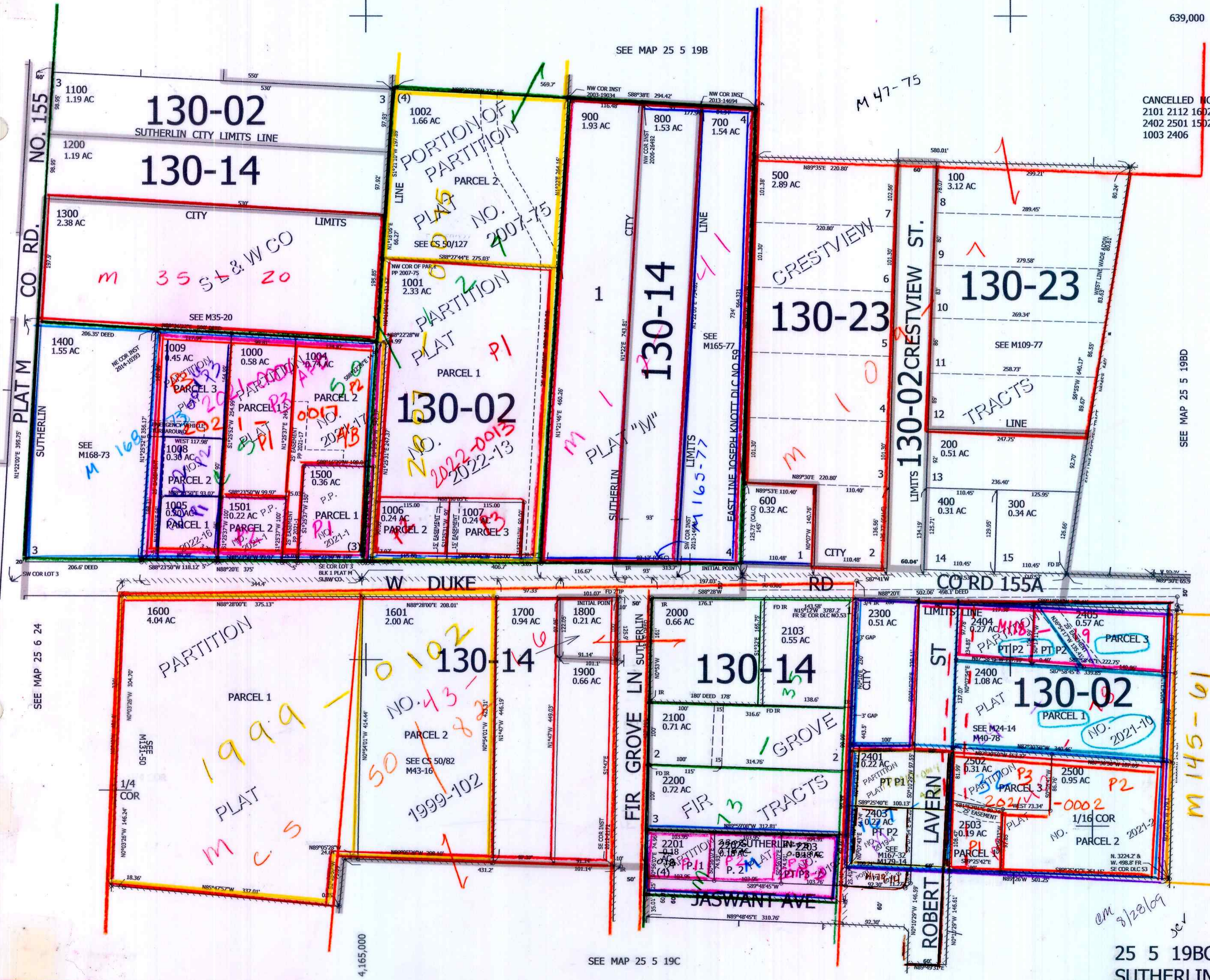
1" = 100'

1/16 COR

639,000

SEE MAP 25 5 19B

CANCELLED NOS 2101 2112 1602 2402 2501 1502 1003 2406



SEE MAP 25 6 24

SEE MAP 25 5 19BD

SEE MAP 25 5 19C

am 8/28/09

25 5 19BC SUTHERLIN