

SE1/4 NE1/4 SEC.19 T.25S. R.5W. W.M.
DOUGLAS COUNTY

REVISED ON
4-14-15

25 5 19AD
SUTHERLIN

CANCELLED NOS
101 206 205
207 208 200A1

THIS MAP WAS PREPARED FOR
ASSESSMENT PURPOSE ONLY.

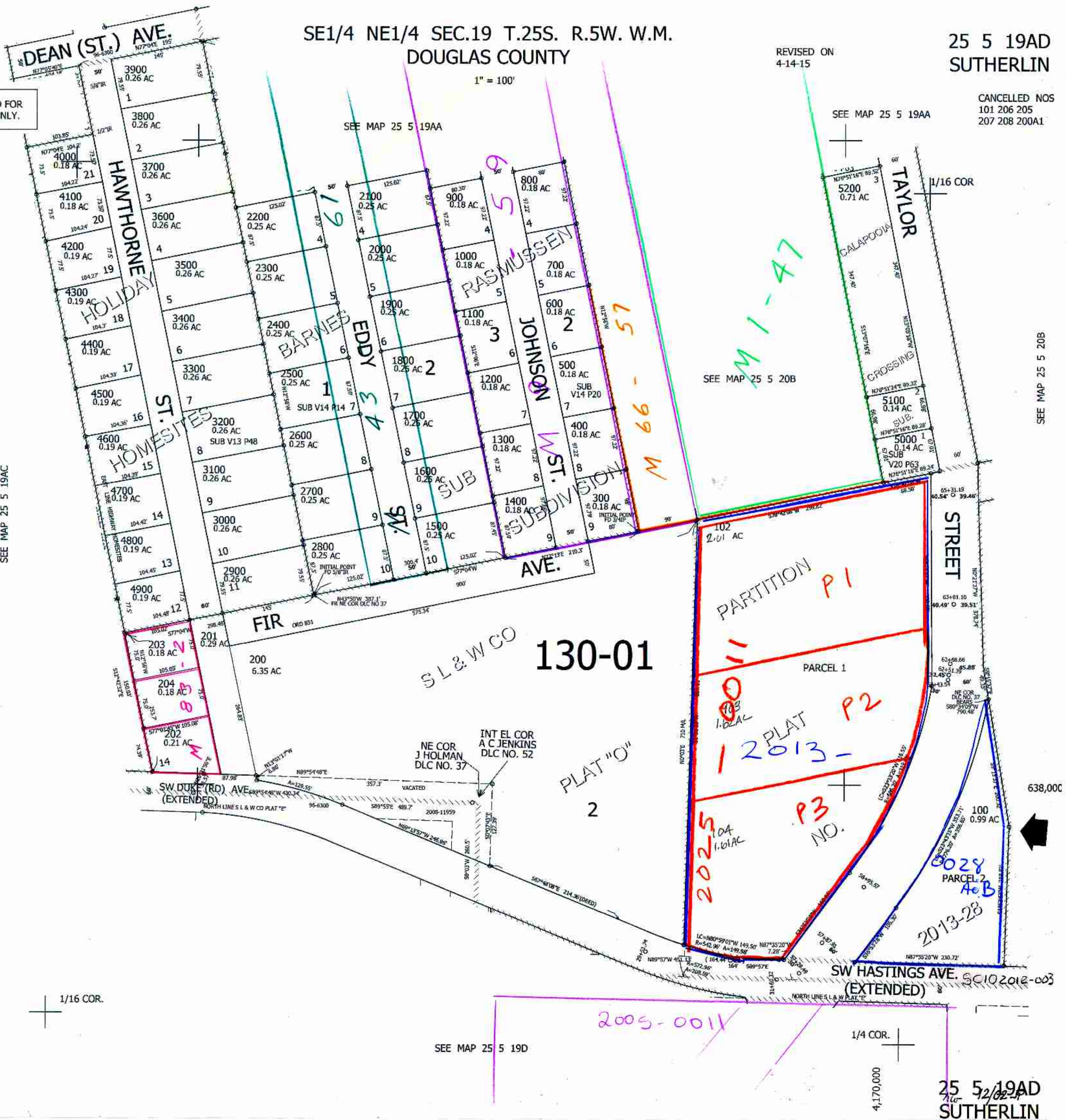
1" = 100'

SEE MAP 25 5 19AA

SEE MAP 25 5 19AA

SEE MAP 25 5 19AC

SEE MAP 25 5 20B



SEE MAP 25 5 19D

1/4 COR.

4,170,000

25 5 19AD
SUTHERLIN

638,000

SC102012-003

2005-0011

12 PLAT 2013-
P2
P3 NO.

2025
104
1.61 AC

2013-28
PARCEL 2
A+B

130-01

PLAT "O"
2

PARTITION P1

PARCEL 1

INT EL COR
A C JENKINS
DLC NO. 52

NE COR
J HOLMAN
DLC NO. 37

SW DUK (RD) AVE
(EXTENDED)

SW HASTINGS AVE
(EXTENDED)

HAWTHORNE
HOLIDAY
HOMESITES

BARNES
EDDY

RASMUSSEN
JOHNSON

TAYLOR
CALAPOOIA

ST. ST.

W ST.

STREET

DEAN (ST.) AVE.

FIR

AVE.

1/16 COR.

