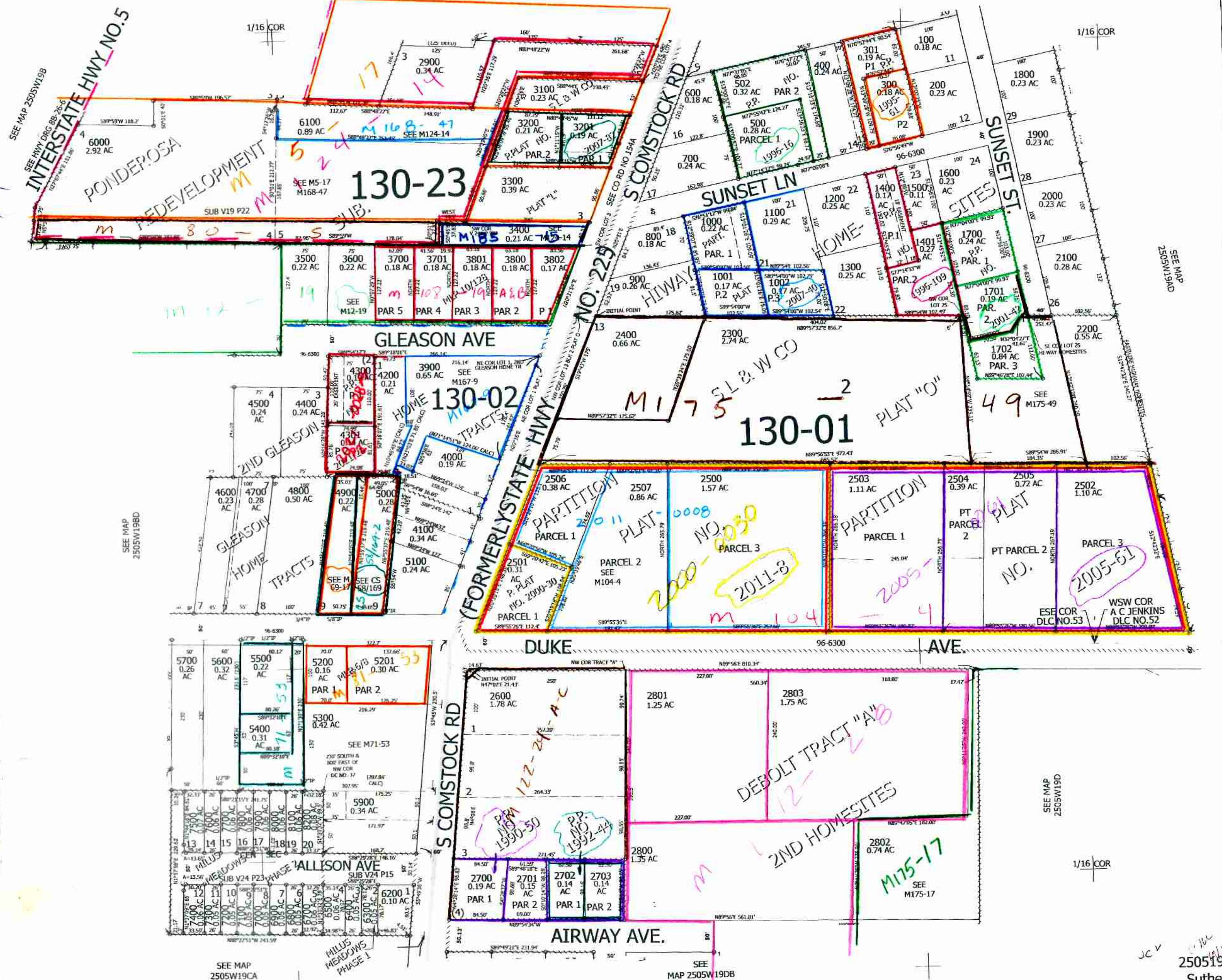


SW1/4 NE1/4 SEC.19 T.25S. R.05W. W.M.
DOUGLAS COUNTY
1" = 100'

THIS MAP WAS PREPARED FOR ASSESSMENT PURPOSE ONLY.
Upper Left:
123°20'17"W 43°23'7"N
4167020E 639160N FT.

CANCELLED NOS:
200M1 2800A1 3000
501 401 3401
5800M1 2801A1 6101
2301 5800 6600



SEE MAP 2505W198B

SEE MAP 2505W19CA

SEE MAP 2505W19DB

SEE MAP 2505W19D

250519AC
Sutherland