

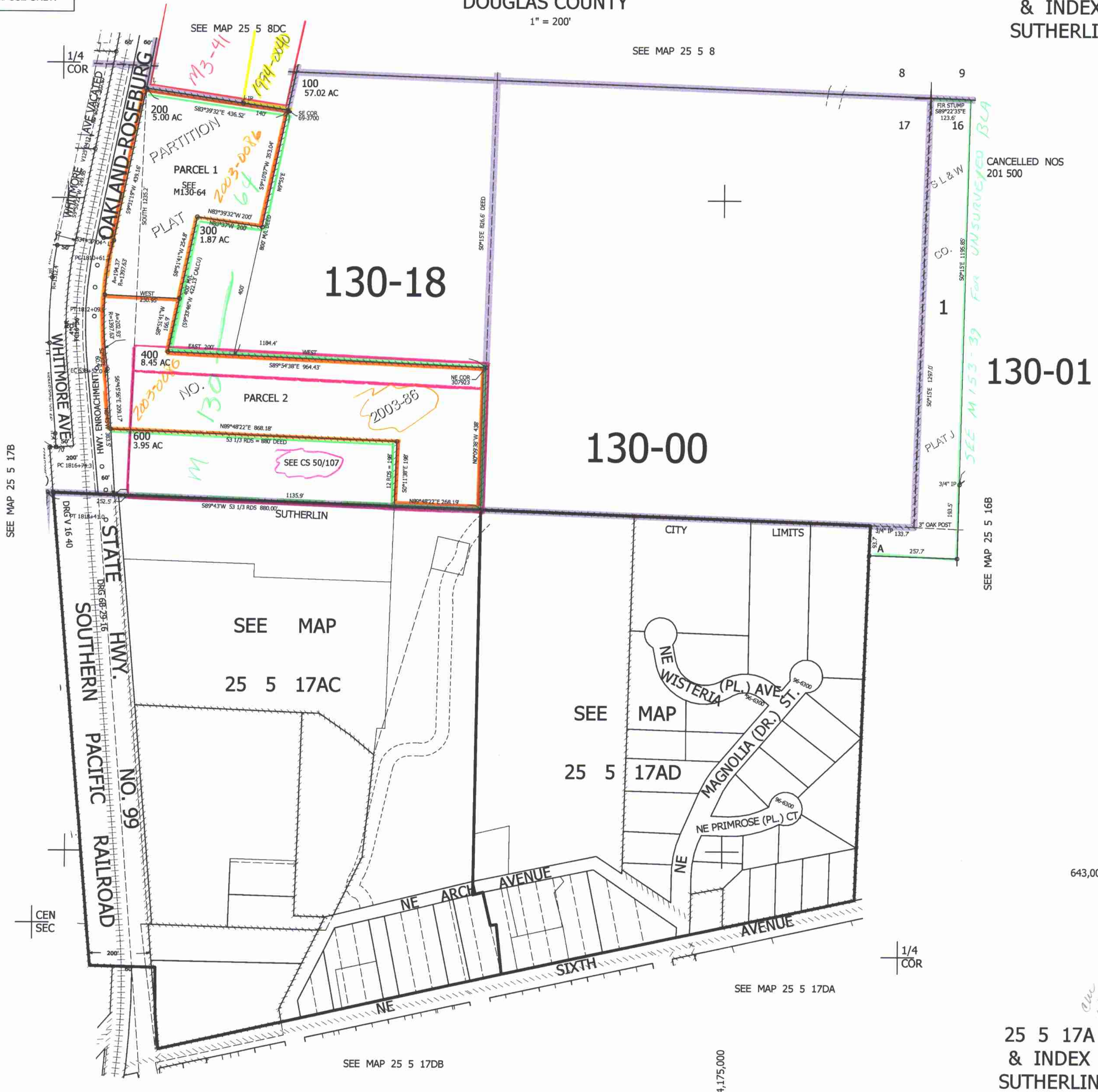
THIS MAP WAS PREPARED FOR ASSESSMENT PURPOSE ONLY.

NE1/4 SEC.17 T.25S. R.5W. W.M. DOUGLAS COUNTY

1" = 200'

REVISED ON 6-22-07

25 5 17A & INDEX SUTHERLIN



SEE MAP 25 5 8

8 9

17 16

CANCELLED NOS 201 500

SEE M153-39 FOR UNSURVEYED BLA

130-18

130-01

130-00

SEE MAP 25 5 17B

SEE MAP 25 5 16B

SEE MAP 25 5 17AC

SEE MAP 25 5 17AD

SEE MAP 25 5 17DA

SEE MAP 25 5 17DB

643,000

25 5 17A & INDEX SUTHERLIN

4,175,000

aw  
4/26/07  
ve