

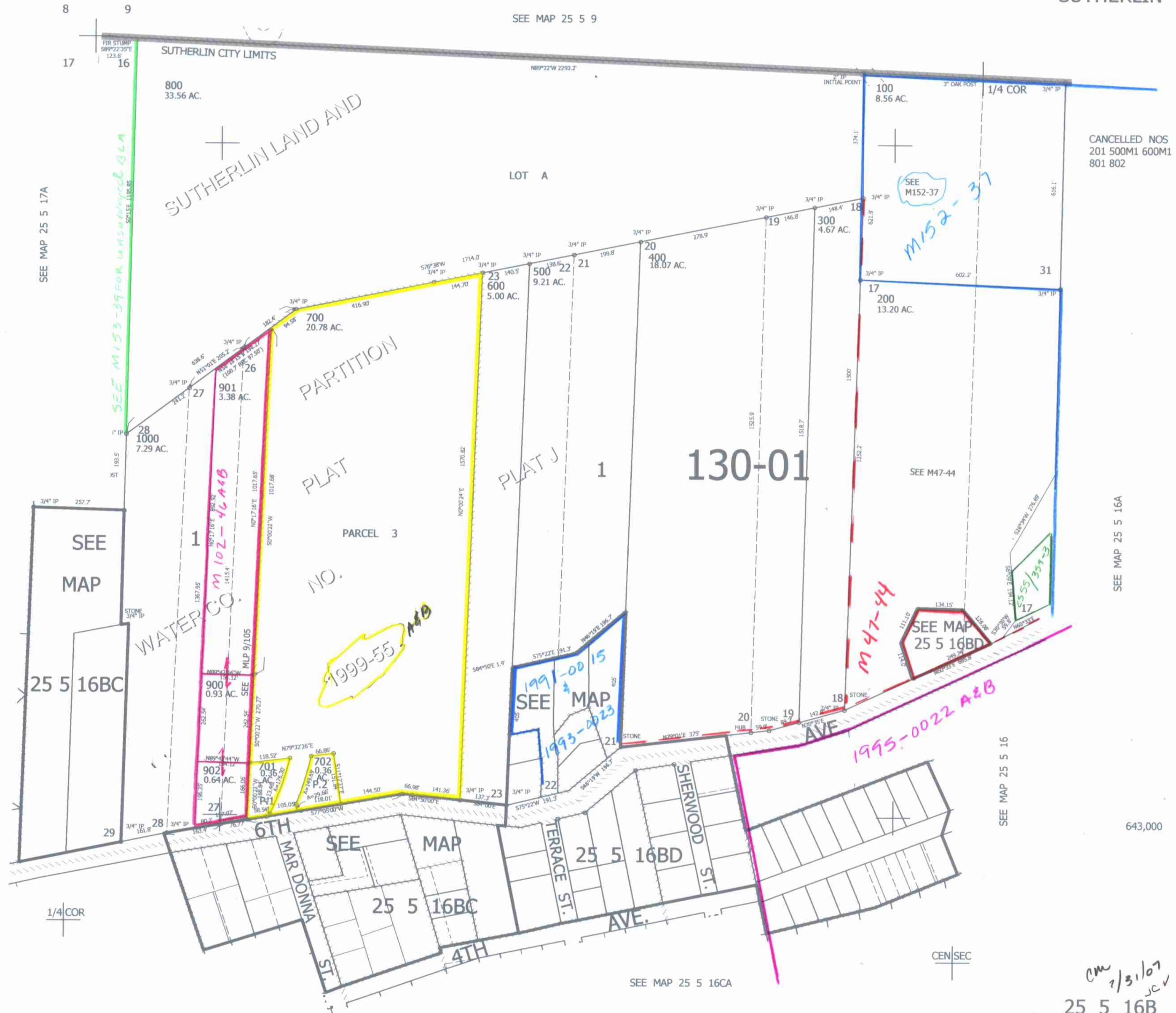
THIS MAP WAS PREPARED FOR ASSESSMENT PURPOSE ONLY.

NW1/4 SEC.16 T.25S. R.5W. W.M. DOUGLAS COUNTY
1" = 200'

REVISED ON 6-22-07

25 5 16B & INDEX SUTHERLIN

SEE MAP 25 5 9



CANCELLED NOS
201 500M1 600M1
801 802

SEE MAP 25 5 16A

643,000

SEE MAP 25 5 16

SEE MAP 25 5 16CA

SEE MAP 25 5 16CB

4,179,000

cmw
2/3/07
JC
25 5 16B & INDEX SUTHERLIN