

THIS MAP WAS PREPARED FOR ASSESSMENT PURPOSE ONLY.

Upper Left: 123°16'43"W 43°13'22"N 4180802E 579396N ft

SE1/4 SEC.15 T.27S. R.05W. W.M. DOUGLAS COUNTY 1" = 200'

Date Exported 2025-01-02

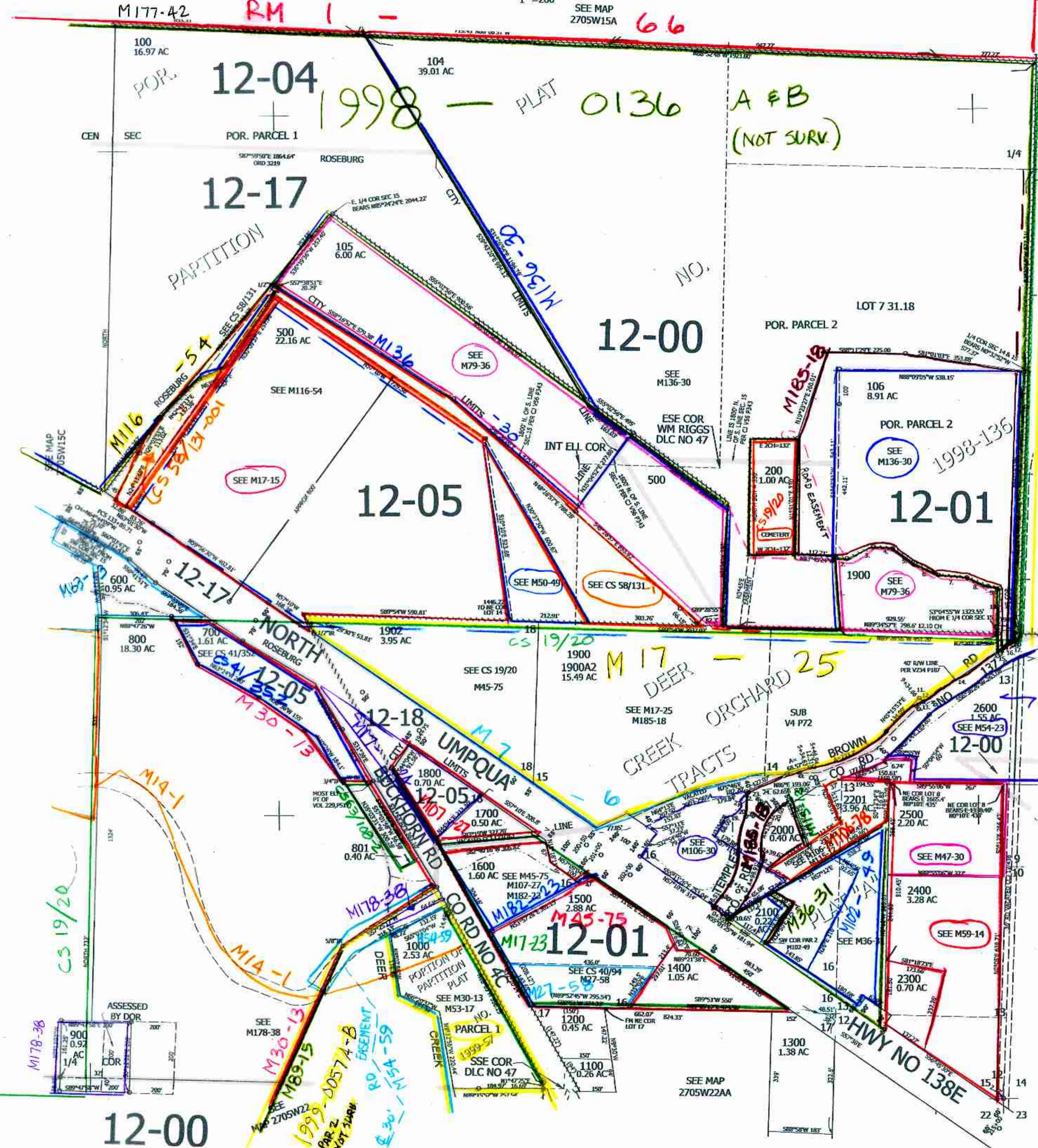
270515D & INDEX Roseburg

CANCELLED NOS: 1900A1 501 2003 103 301 1901 1001 1501 2400A1 101 102 300 302 400 107 901 902 802 2002 2004 2005 2200 2001

- PARCEL 1900
1. N3°43'27"W 198.93'
  2. S82°38'42"E 32.84'
  3. N66°11'03"E 82.18'
  4. S85°08'48"E 55.64'
  5. S51°44'24"W 78.24'
  6. S64°00'55"E 73.95'
  7. S84°24'06"E 81.69'
  8. S67°31'58"E 64.2'
  9. S78°29'00"E 35.3'
  10. S2°20'00"W 124.35'
  11. S44°45'09"E 15.50'
  12. S44°45'09"E 8.80'
  13. S44°45'09"E 8.61'
  14. N56°36'26"E 247.65'
  15. N56°36'26"E 9.73'
  16. N67°56'40"E 52.51'
  17. N70°40'54"E 6.87'
  18. N2°20'37"E 30.44'
  19. N77°49'E 21.21'
  20. N32°49'E 14.68'
  21. R=98.24' A=13.95'
  22. N0°27'47"W 21.01'
  23. R=113.24' A=76.82'

6

6



2008-0065  
CS 19/20  
SEE MAP 2705W14



12058  
see

Lower Right: 123°15'49"W 43°12'49"N 4184727E 575919N ft

270515D & INDEX Roseburg