

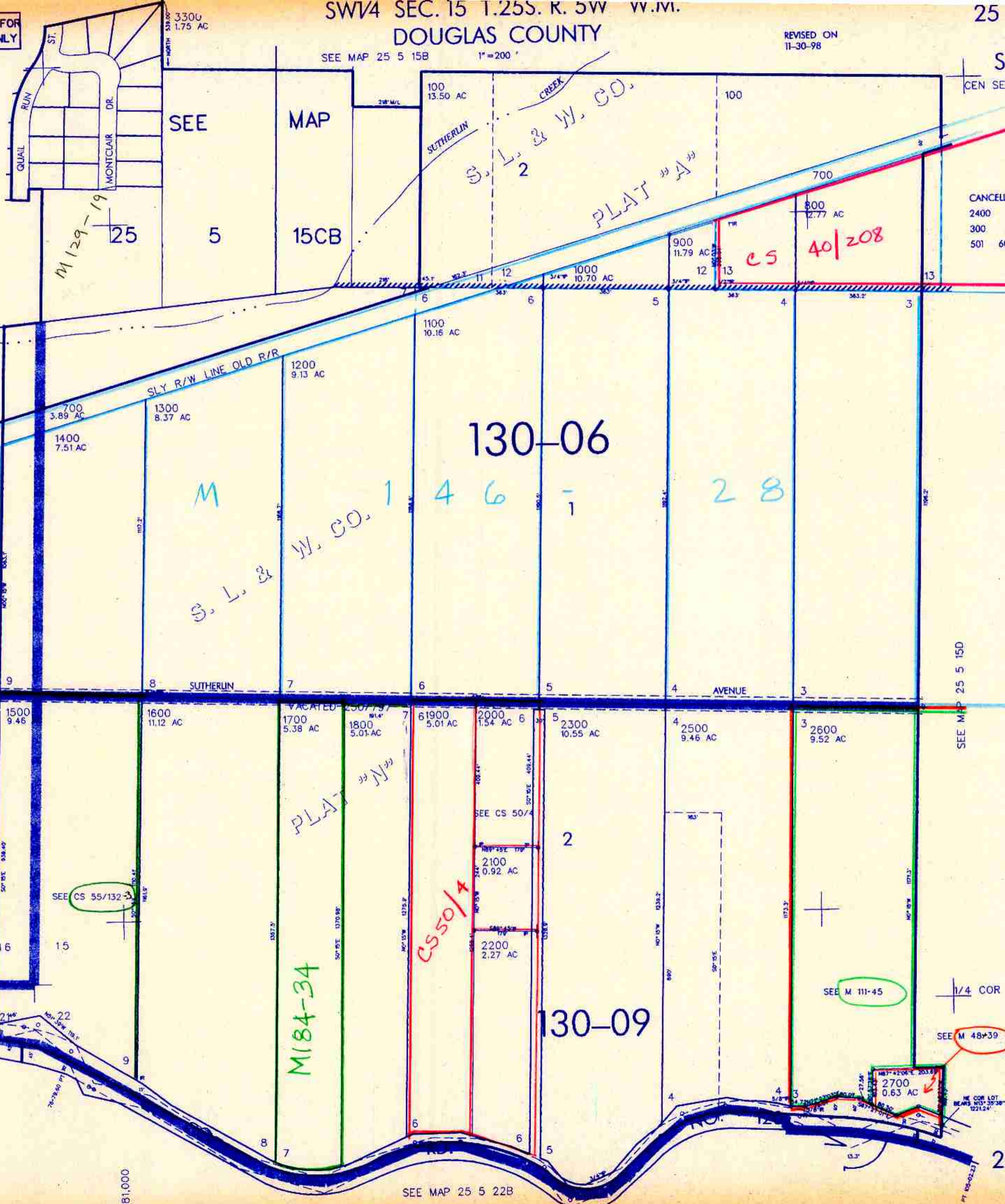
THIS MAP WAS PREPARED FOR ASSESSMENT PURPOSE ONLY

SW 1/4 SEC. 15 T. 25S. R. 5W W.M.  
DOUGLAS COUNTY

REVISED ON 11-30-98

25 5 15C & INDEX SUTHERLIN

SEE MAP 25 5 15B 1"=200'



CANCELLED NO'S

|      |        |     |
|------|--------|-----|
| 2400 | 1800MI | 200 |
| 300  | 400    | 500 |
| 501  | 600    |     |

130-01

130-06

130-10

130-09

M184-34

CS 40/208

CS 50/4

SEE M 111-45

SEE M 48+39

SEE MAP 25 5 22B

25 5 15C & INDEX SUTHERLIN