

THIS MAP WAS PREPARED FOR ASSESSMENT PURPOSE ONLY

SE 1/4 SEC. 14 T. 25S. R. 5 W. W.M. DOUGLAS COUNTY

REVISED ON 1-8-98

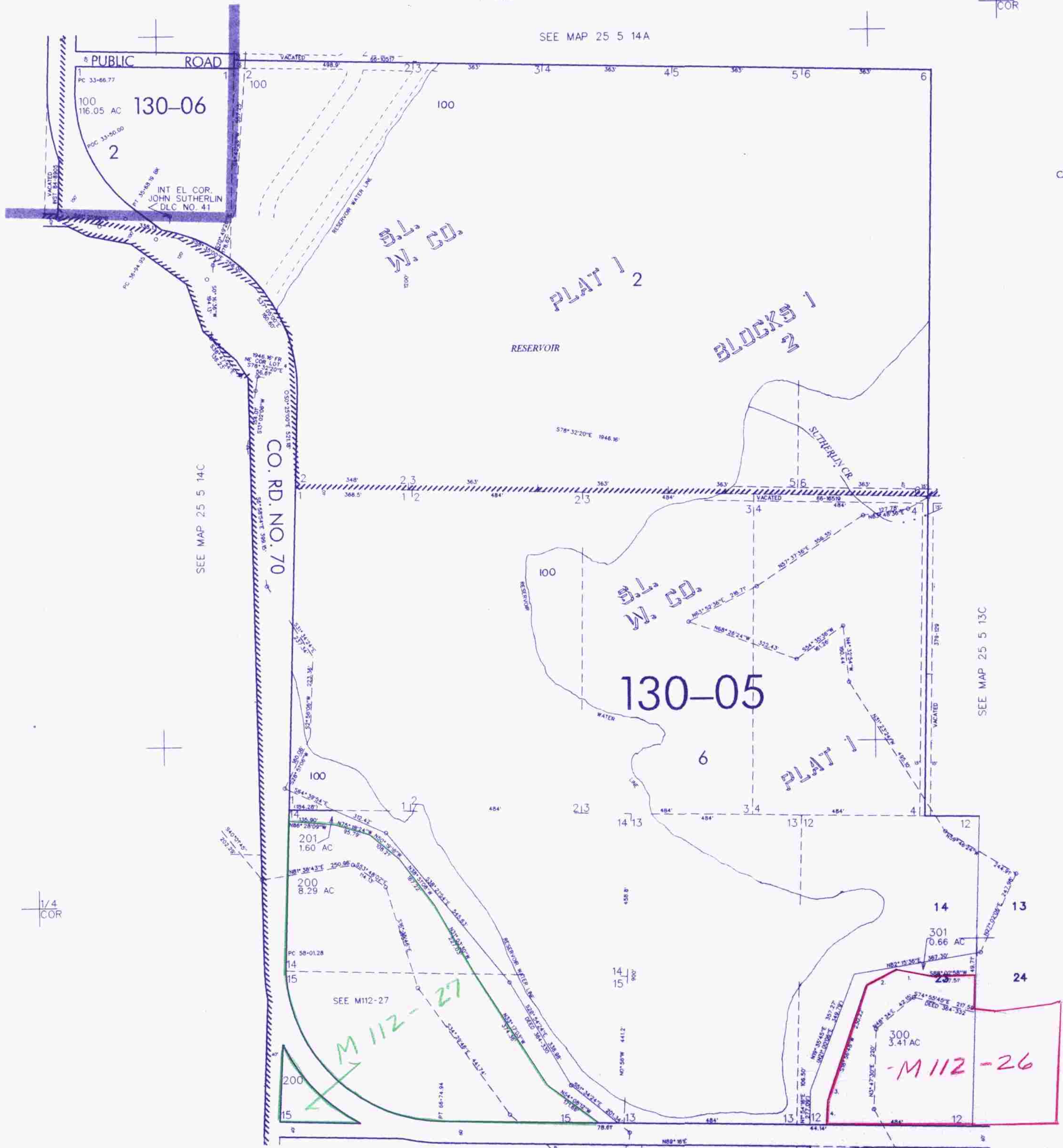
25 5 14D

1" = 200'

CEN SEC

1/4 COR

SEE MAP 25 5 14A



CANCELLED NO'S

SEE MAP 25 5 14C

SEE MAP 25 5 13C

640,000

SEE MAP 25 5 23A

4,191,000

PARCEL 301

1. N80°16'18"W 110.4'
2. S61°12'24"W 92.7'
3. S18°48'05"W 115.45'
4. S2°34'24"W 83.46'

25 5 14D
nr 31/98
CB