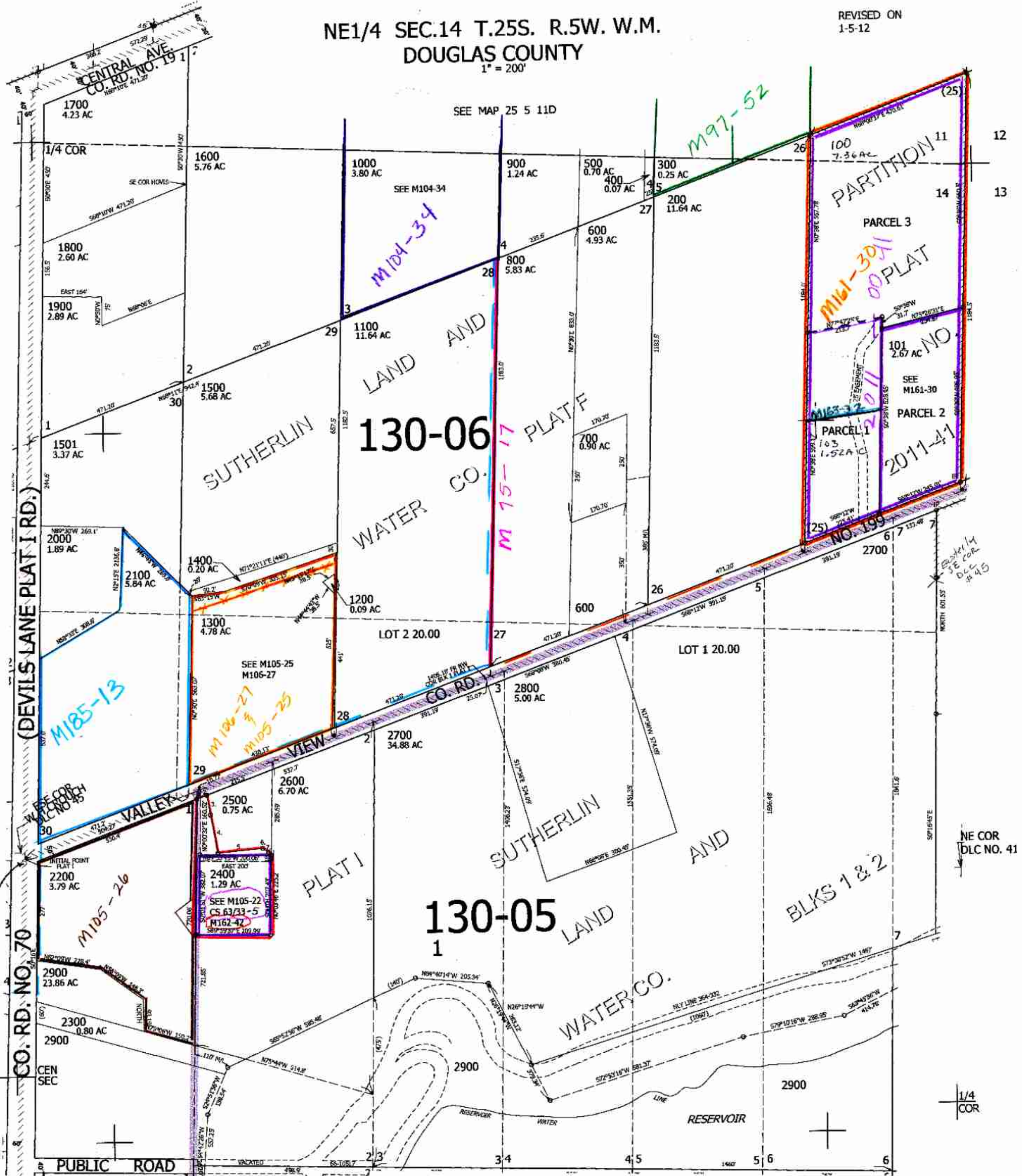


THIS MAP WAS PREPARED FOR ASSESSMENT PURPOSE ONLY.

NE1/4 SEC.14 T.25S. R.5W. W.M.
DOUGLAS COUNTY
1" = 200'

REVISED ON
1-5-12

25 5 14A



CANCELLED NOS
1301 2501

SEE MAP 25 5 14B

SEE MAP 25 5 13B

- TAXLOT 2400
1. N68°09'44"E 10.78'
 2. N68°09'44"E 18.81' SURVEY
 3. S11°31'03"E 86.41'
 4. S11°31'03"E 109.51'
 5. N63°26'25"E 125.97'
 6. S57°54'38"E 19.91'
 7. S39°10'40"E 11.76'

Initial Point Plat I show plat see CS 44/123-124

cmc
1/27/12
642,000

SEE MAP 25 5 14D

25 5 14A

4,191,000