

THIS MAP WAS PREPARED FOR ASSESSMENT PURPOSE ONLY.

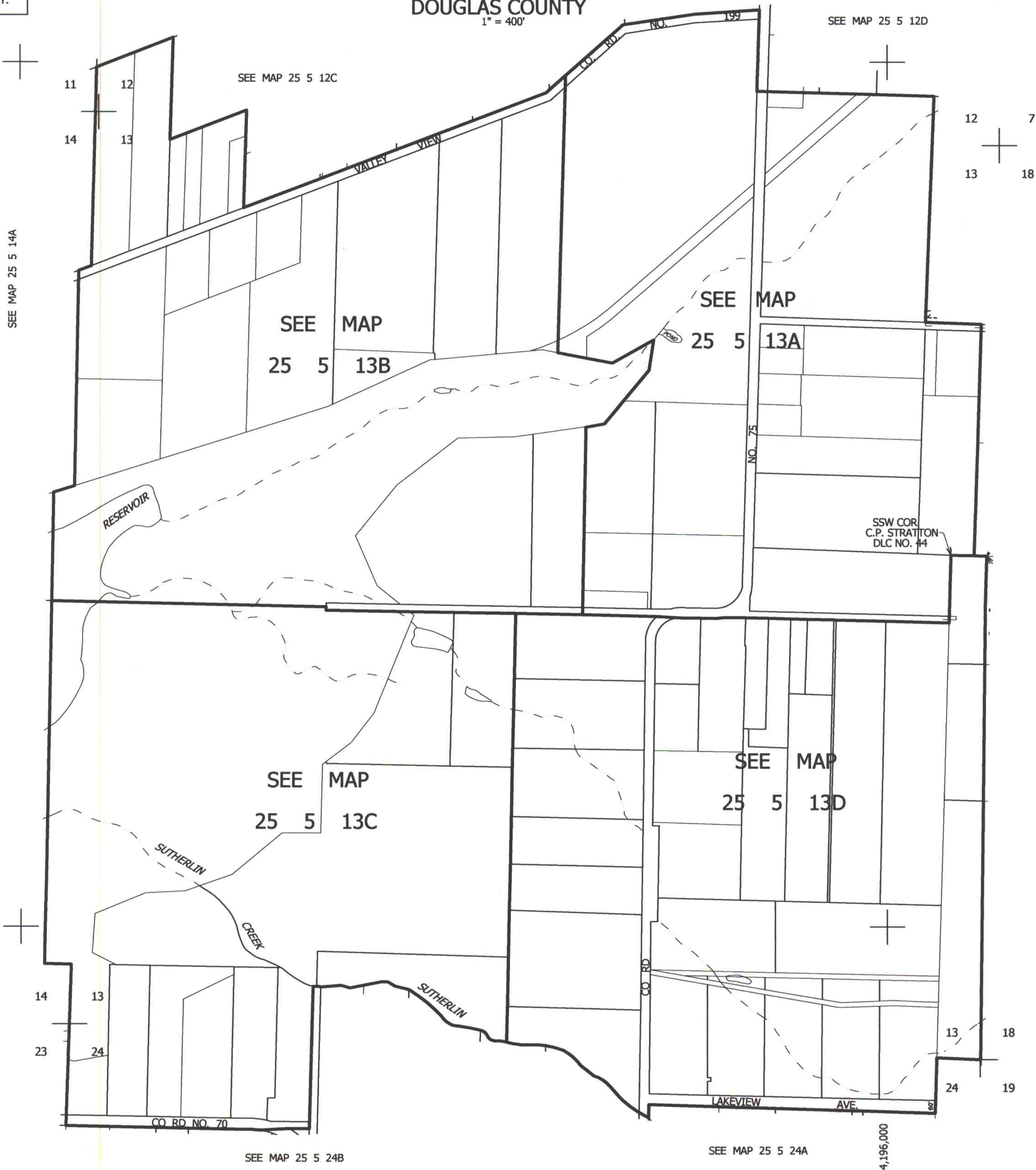
SEC.13 T.25S. R.5W. W.M.
DOUGLAS COUNTY

1" = 400'

REVISED ON
4-11-05

25 5 13
& INDEX

SEE MAP 25 5 12D



CANCELLED NOS

SEE MAP 25 4 18

640,000

25 5 13
& INDEX