

THIS MAP WAS PREPARED FOR  
ASSESSMENT PURPOSE ONLY.

SE1/4 SEC.12 T.25S. R.5W. W.M.  
DOUGLAS COUNTY

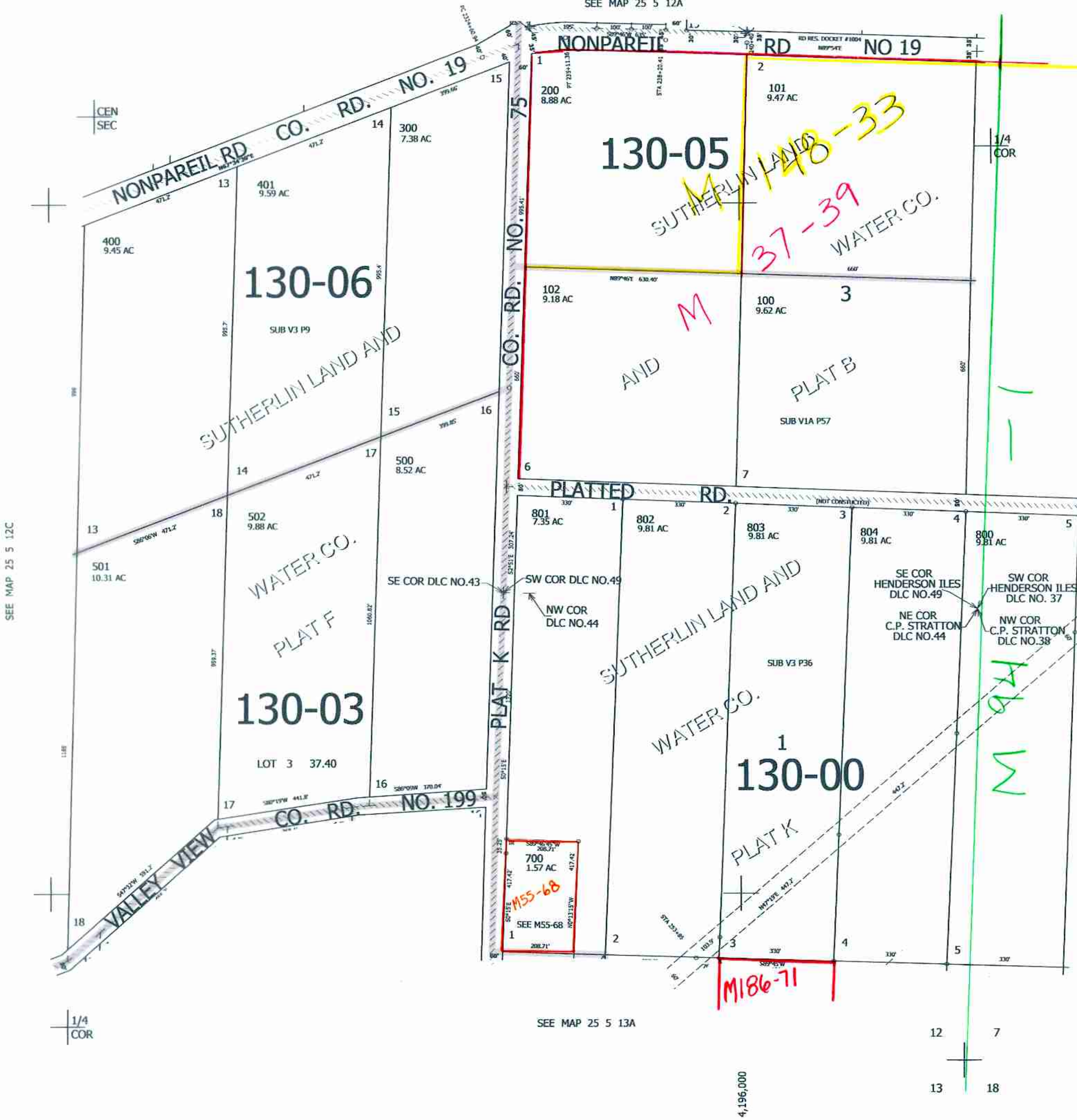
1" = 200'

REVISED ON  
4-22-22

25 5 12D

SEE MAP 25 5 12A

CANCELLED NOS  
600 600M1 700M1  
800M1 103



SEE MAP 25 5 12C

SEE MAP 25 4 7

645,000

SEE MAP 25 5 13A

5/2022  
SC

25 5 12D