

NE1/4 SEC.12 T.25S. R.5W. W.M.  
DOUGLAS COUNTY

25 5 12A

THIS MAP WAS PREPARED FOR  
ASSESSMENT PURPOSE ONLY.

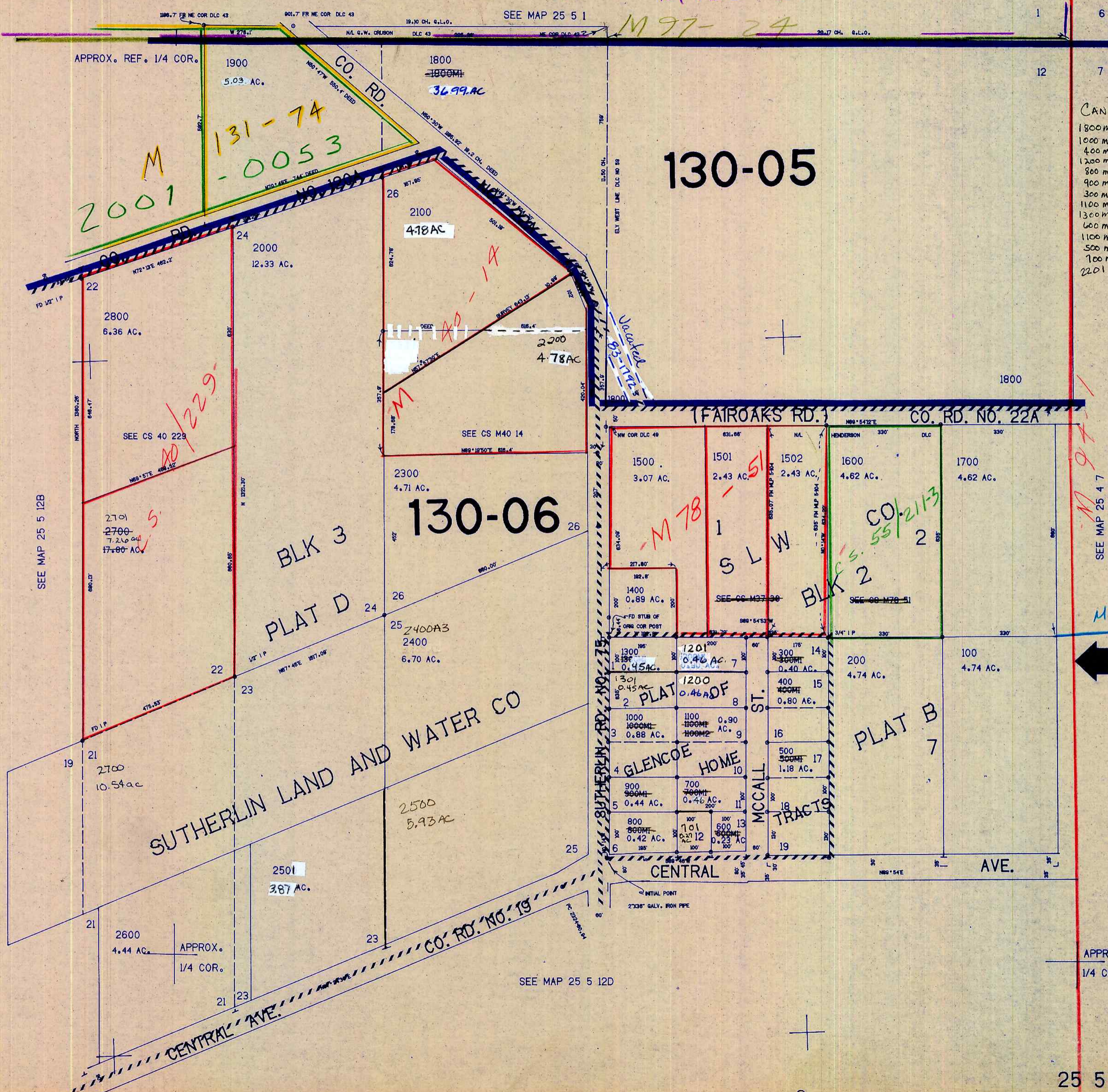
130-00

1"=200'

M120-61

M97-24

SEE MAP 25 5 1



- CANCELLED NOS
- 1800 ml
  - 1000 ml
  - 400 ml
  - 1200 ml
  - 800 ml
  - 900 ml
  - 300 ml
  - 1100 ml
  - 1300 ml
  - 600 ml
  - 1100 ml
  - 500 ml
  - 700 ml
  - 2201

649,000

SEE MAP 25 4 7

M159-63

APPROX.  
1/4 COR.

25 5 12A

1,275,000

8/18/20

CONTROL PH 2-79 LAYOUT BC 1-80 TRACED ST 2-80 CHECKED TD 1-80