

THIS MAP WAS PREPARED FOR ASSESSMENT PURPOSE ONLY.

SW1/4 SEC.11 T.25S. R.5W. W.M. DOUGLAS COUNTY

1" = 200'

REVISED ON 7-28-10

25 5 11C

CANCELLED NOS 600M1 700M1 602

Vol 1 Pg 135-6

Vol 2 Pg 243

Vol 2 Pg 2

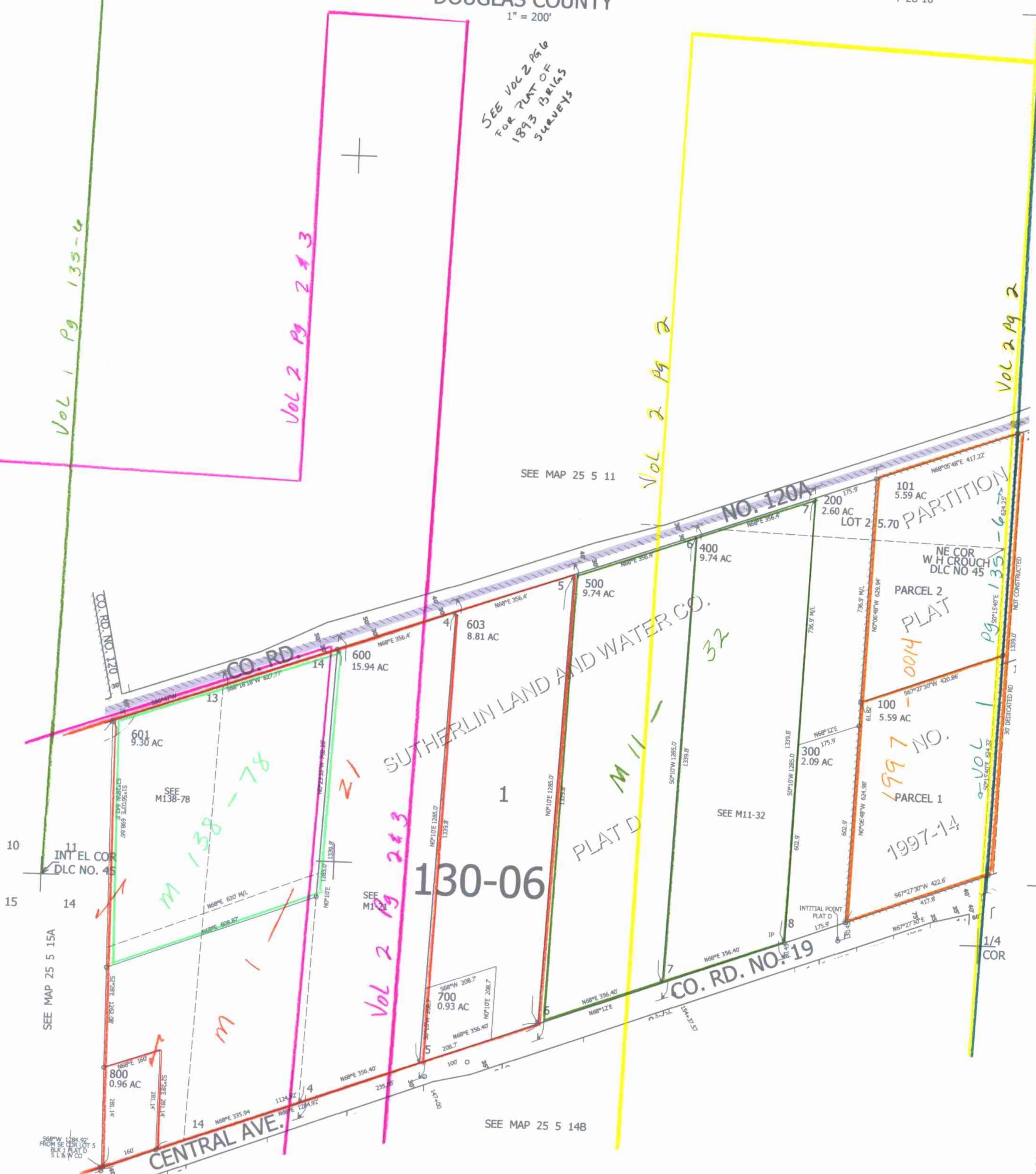
Vol 2 Pg 2

SEE VOL 2 PG 6 FOR PLAT OF 1893 BRIGGS SURVEYS

SEE MAP 25 5 11

SEE MAP 25 5 11D

SEE MAP 25 5 14B



SEE MAP 25 5 15A

4,189,000

25 5 11C

645,000

CMC 2/22/08