

THIS MAP WAS PREPARED FOR ASSESSMENT PURPOSE ONLY.

SE1/4 SE1/4 SEC.8 T.25S. R.5W. W.M.  
DOUGLAS COUNTY

1" = 100'

REVISED ON  
12-16-13

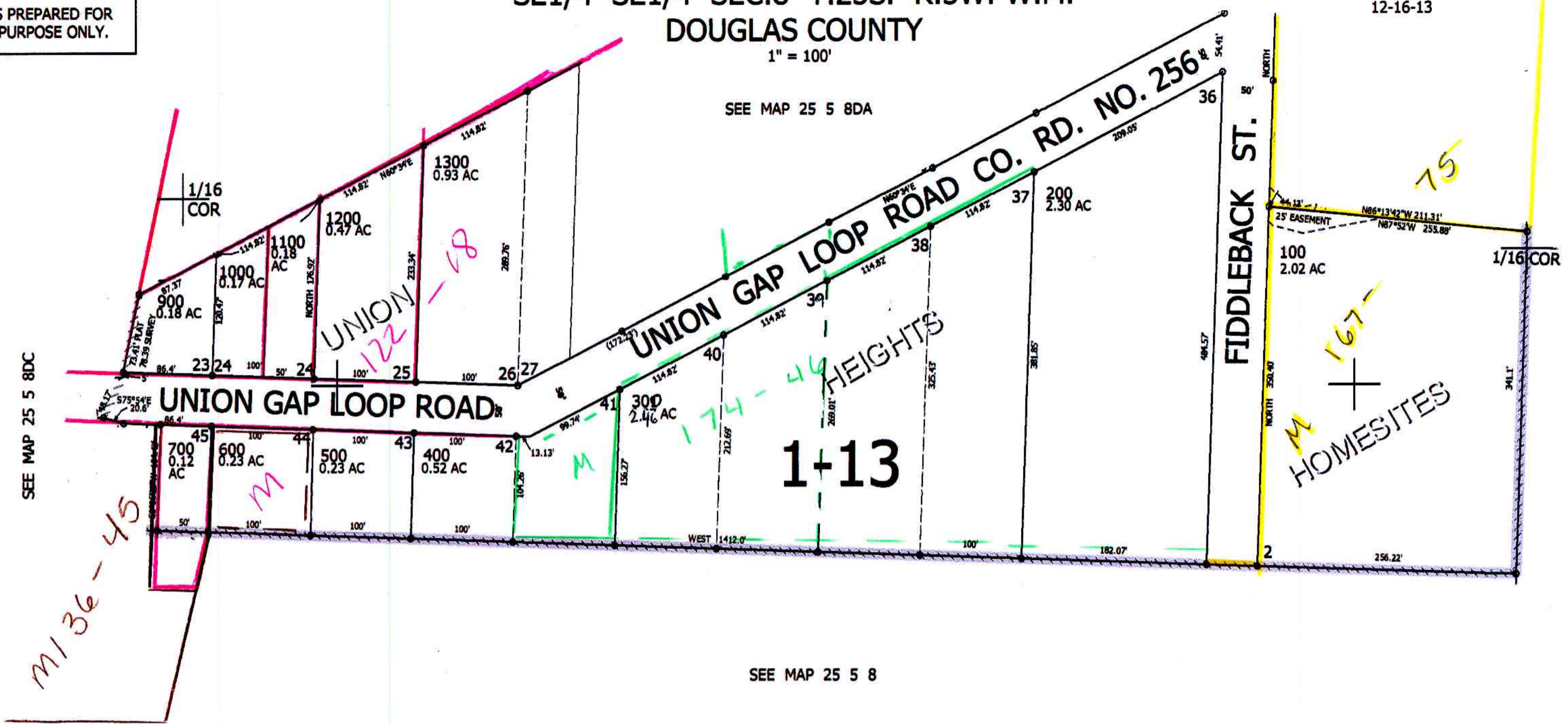
25 5 8DD

SEE MAP 25 5 8DA

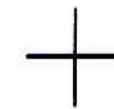
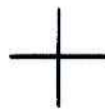
CANCELLED NOS  
800, 301

SEE MAP 25 5 8DC

SEE MAP 25 5 9



SEE MAP 25 5 8



645,500

1/16  
COR

8 9  
17 16

4,175,500

cm 1/3/14  
scr  
25 5 8DD