

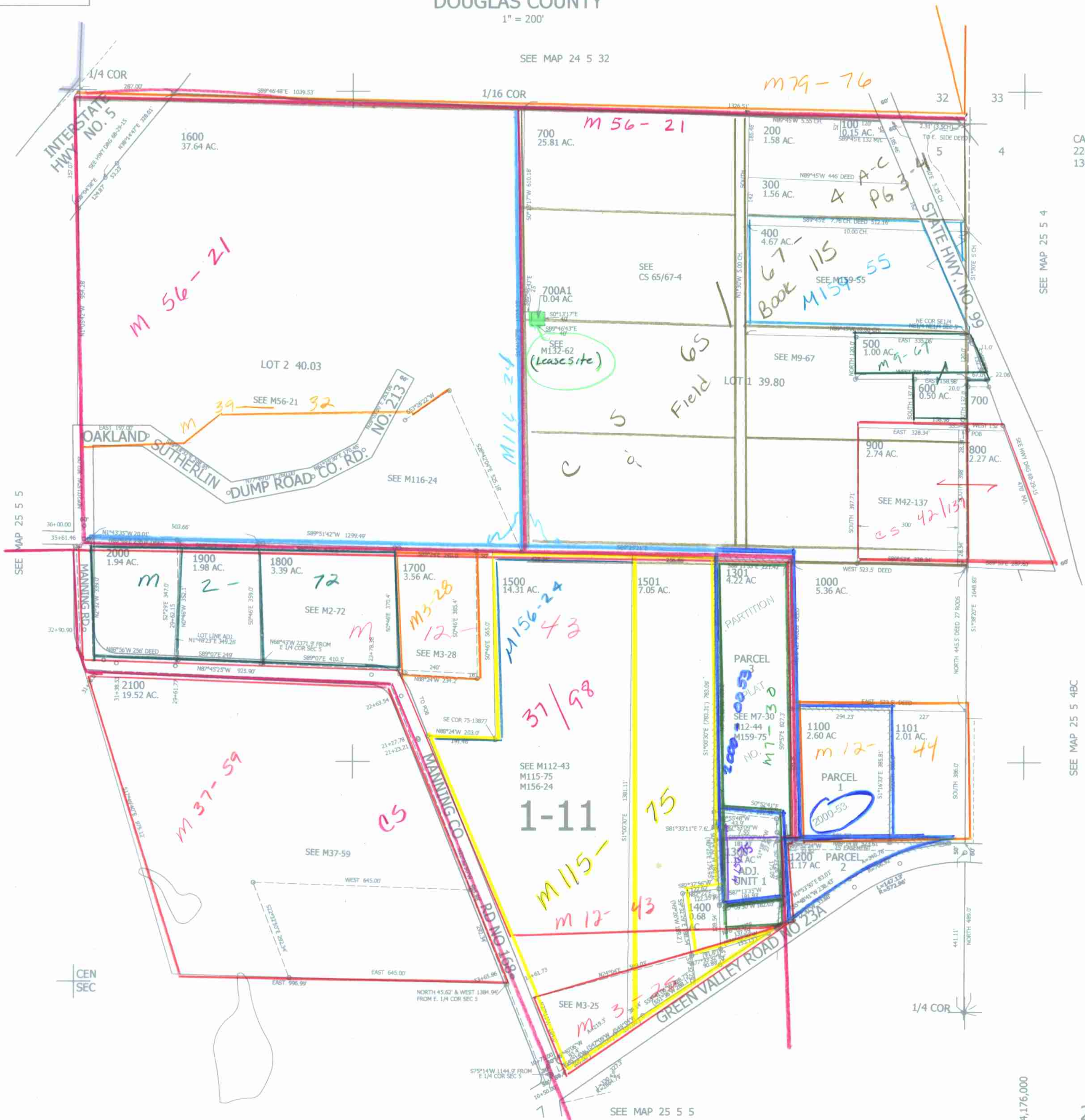
THIS MAP WAS PREPARED FOR ASSESSMENT PURPOSE ONLY.

NE1/4 SEC.5 T.25S. R.5W. W.M. DOUGLAS COUNTY

1" = 200'

REVISED ON 11-23-09

25 5 5A



SEE MAP 24 5 32

CANCELLED NOS 2200 1502 1302 1303

SEE MAP 25 5 4

SEE MAP 25 5 5

SEE MAP 25 5 4BC

654,000

SEE MAP 25 5 5

4,176,000

25 5 5A

aw
4/1/10