

THIS MAP WAS PREPARED FOR ASSESSMENT PURPOSE ONLY.

SW1/4 NE1/4 SEC.4 T.25S. R.5W. W.M.
DOUGLAS COUNTY
1" = 100'

REVISED ON
5-17-13

25 5 4AC
OAKLAND

1/16
COR

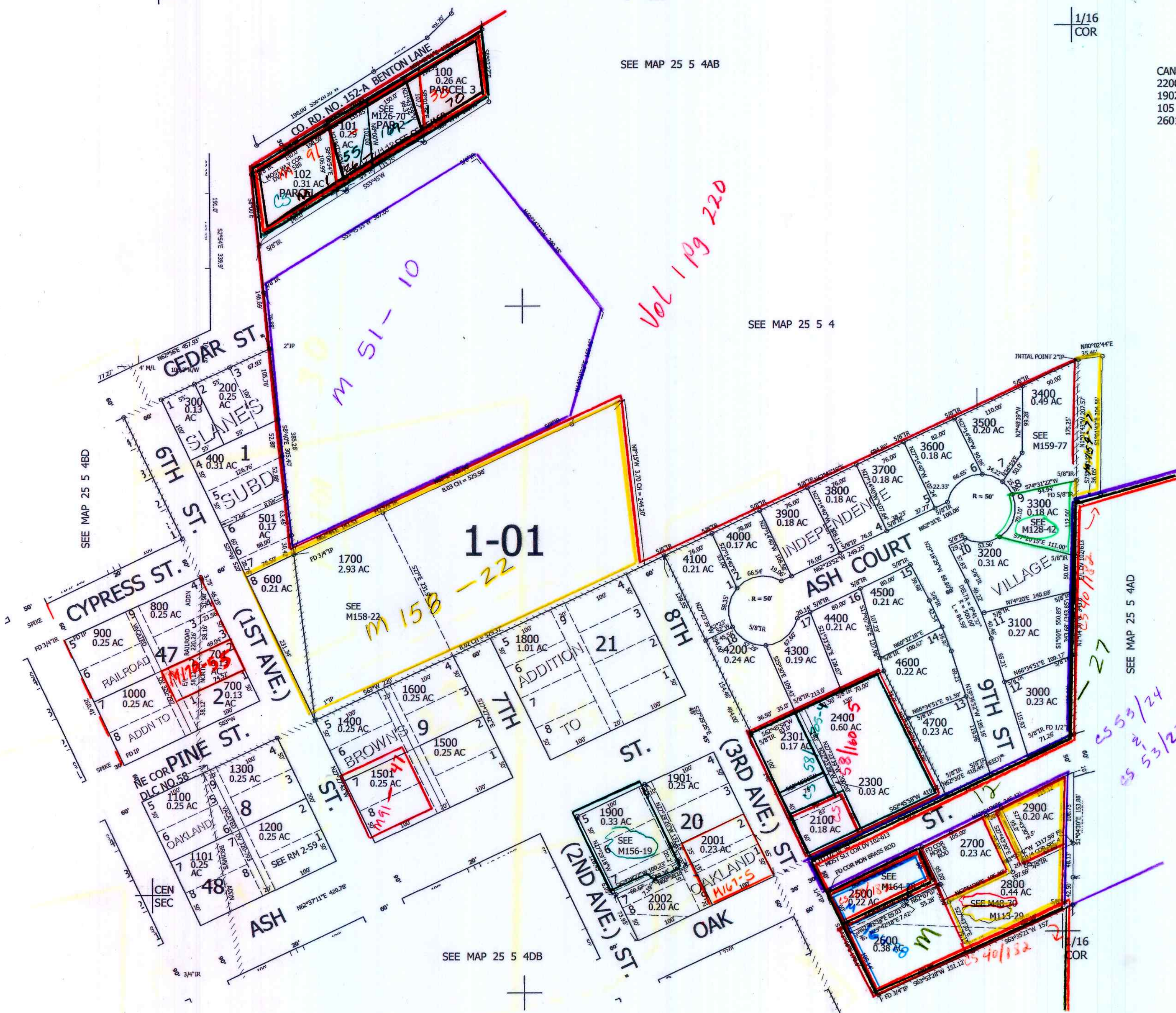
1/16
COR

SEE MAP 25 5 4B

CANCELLED NOS
2200 1903 500
1902 103 104
105 2000 2003
2601

Vol 1 Pg 220

SEE MAP 25 5 4



SEE MAP 25 5 4BD

SEE MAP 25 5 4AD

SEE MAP 25 5 4DB

4,179,000

653,000

*CMW
12/15/18
EV*

25 5 4AC
OAKLAND