

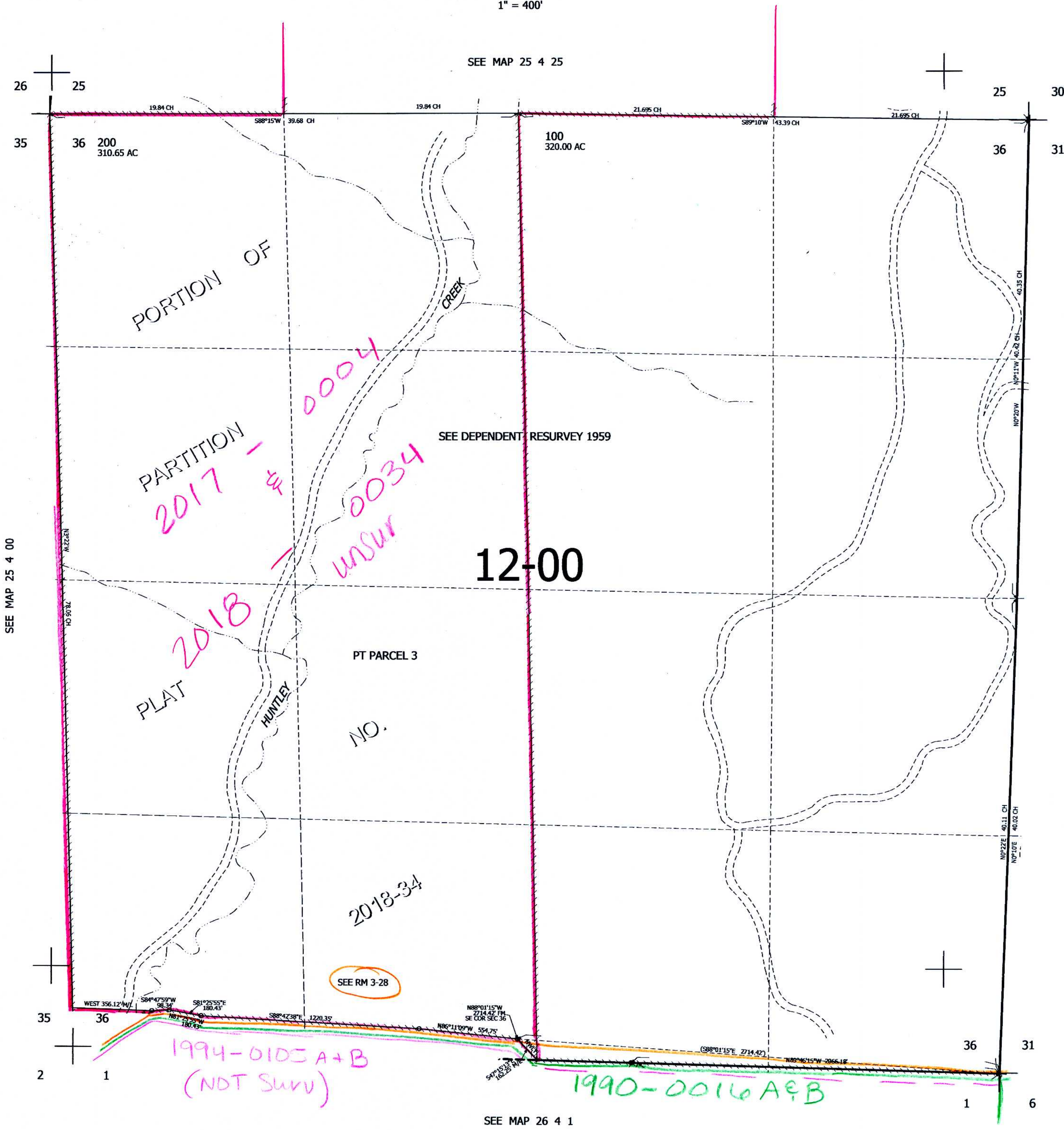
THIS MAP WAS PREPARED FOR
ASSESSMENT PURPOSE ONLY.

SEC.36 T.25S. R.4W. W.M.
DOUGLAS COUNTY

REVISED ON
12-17-18

25 4 36

1" = 400'



CANCELLED NOS
201

SEE MAP 25 4 00

SEE MAP 25 3 31

623,000

SEE MAP 26 4 1

4,227,000

12-19-18
25 4 36
xv