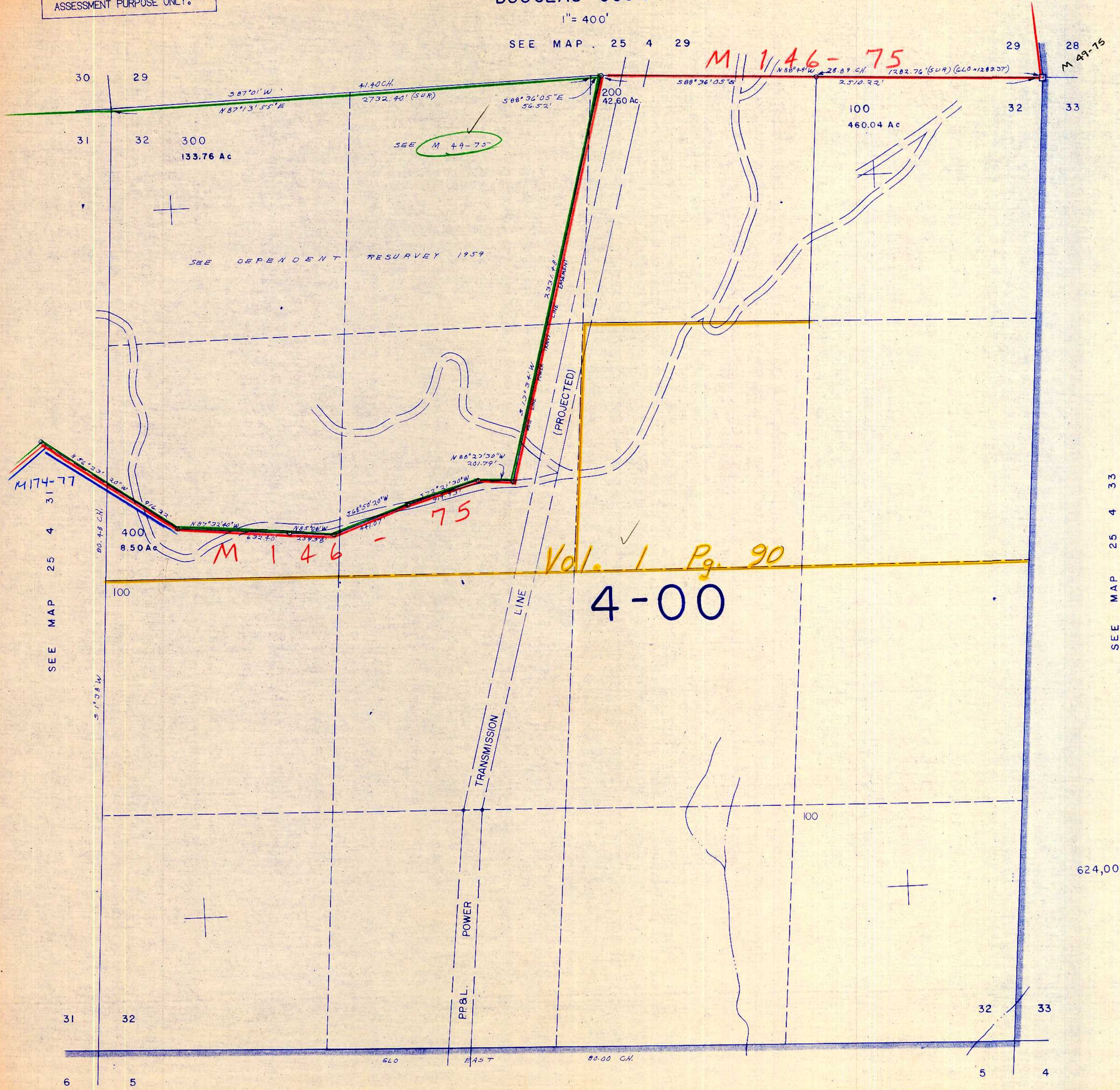


SECTION 32 T.25S. R. 4 W. W.M.
DOUGLAS COUNTY

1" = 400'

SEE MAP 25 4 29

THIS MAP WAS PREPARED FOR
ASSESSMENT PURPOSE ONLY.



M 146-75

SEE M 49-75

M 146-75

Vol. 1 Pg. 90

4-00

SEE MAP 25 4 31

SEE MAP 25 4 33

SEE MAP 26 4 5

1,285,000