

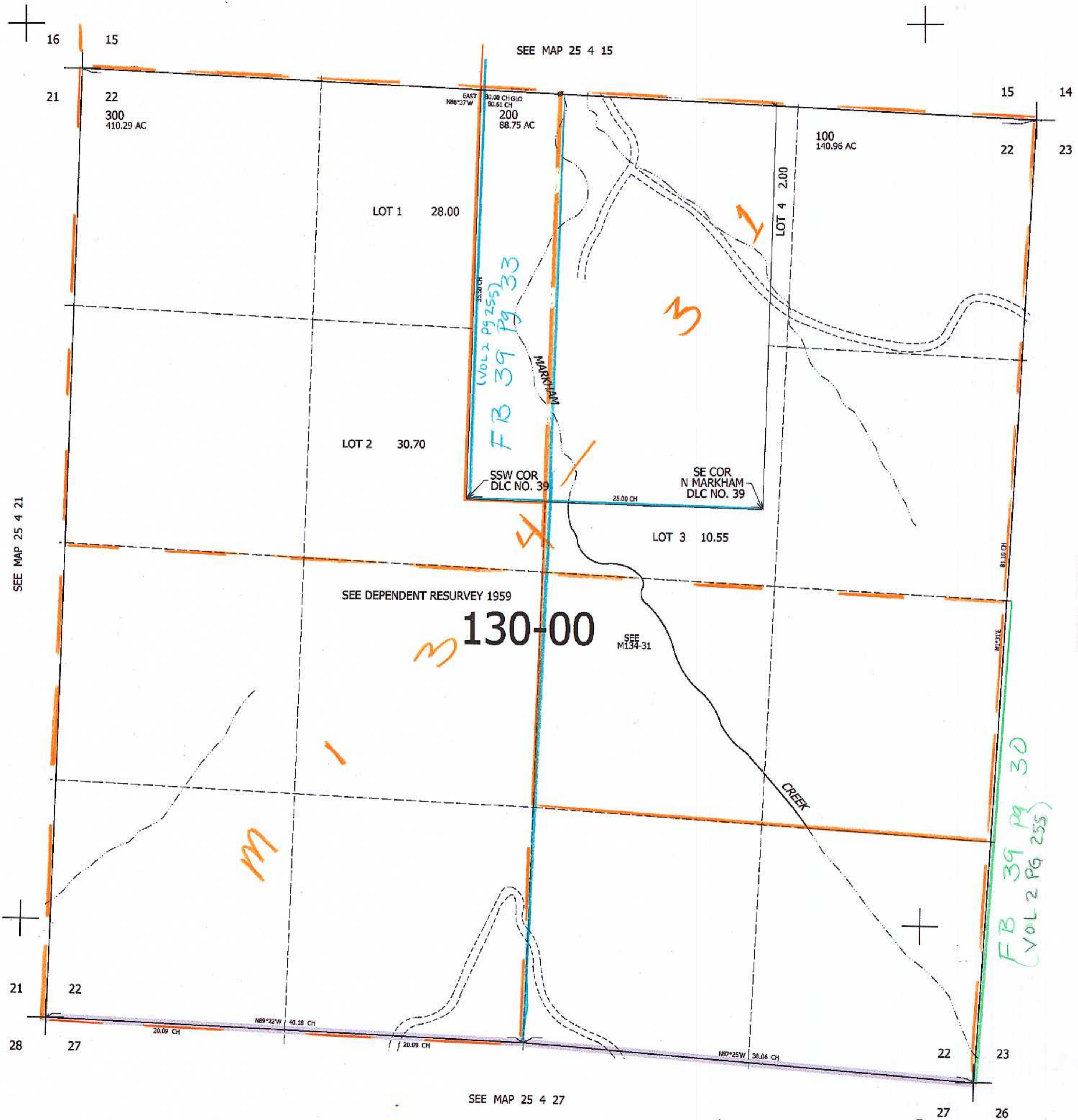
THIS MAP WAS PREPARED FOR ASSESSMENT PURPOSE ONLY.

SEC.22 T.25S. R.4W. W.M.  
DOUGLAS COUNTY

1" = 400'

REVISED ON  
7-7-14

25 4 22



CANCELLED NOS  
101

SEE MAP 25 4 00

634,000

SEE MAP 25 4 27

4,217,000

JC ✓  
25 4 22