

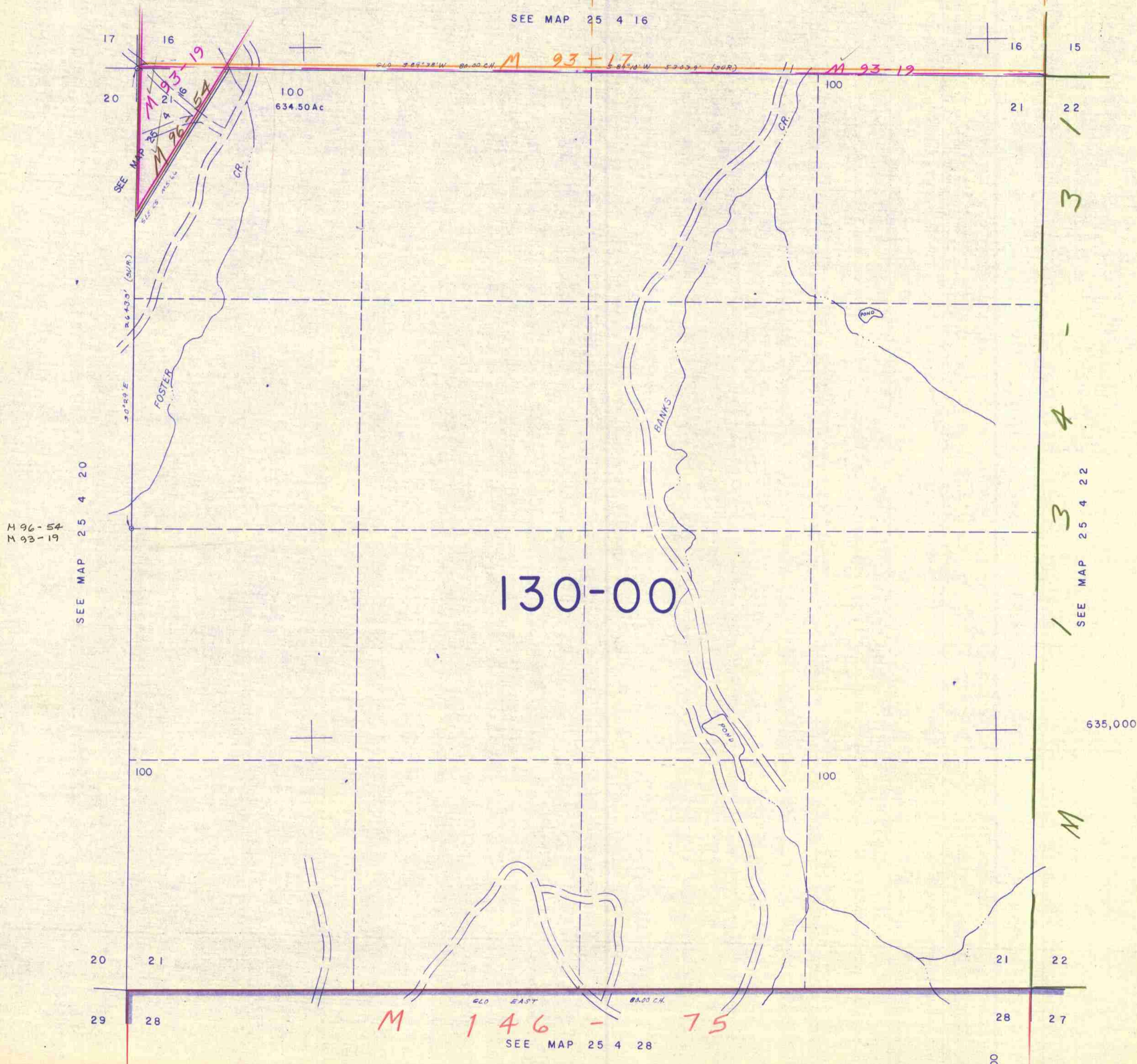
THIS MAP WAS PREPARED FOR
ASSESSMENT PURPOSE ONLY.

SECTION 21 T.25S. R. 4 W. W.M.
DOUGLAS COUNTY

25 4 21

1" = 400'

SEE MAP 25 4 16



M 96-54
M 93-19

SEE MAP 25 4 20

130-00

M 146-75

SEE MAP 25 4 28

SEE MAP 25 4 22

M

635,000

1,291,000

25 4 21

7/84 BS