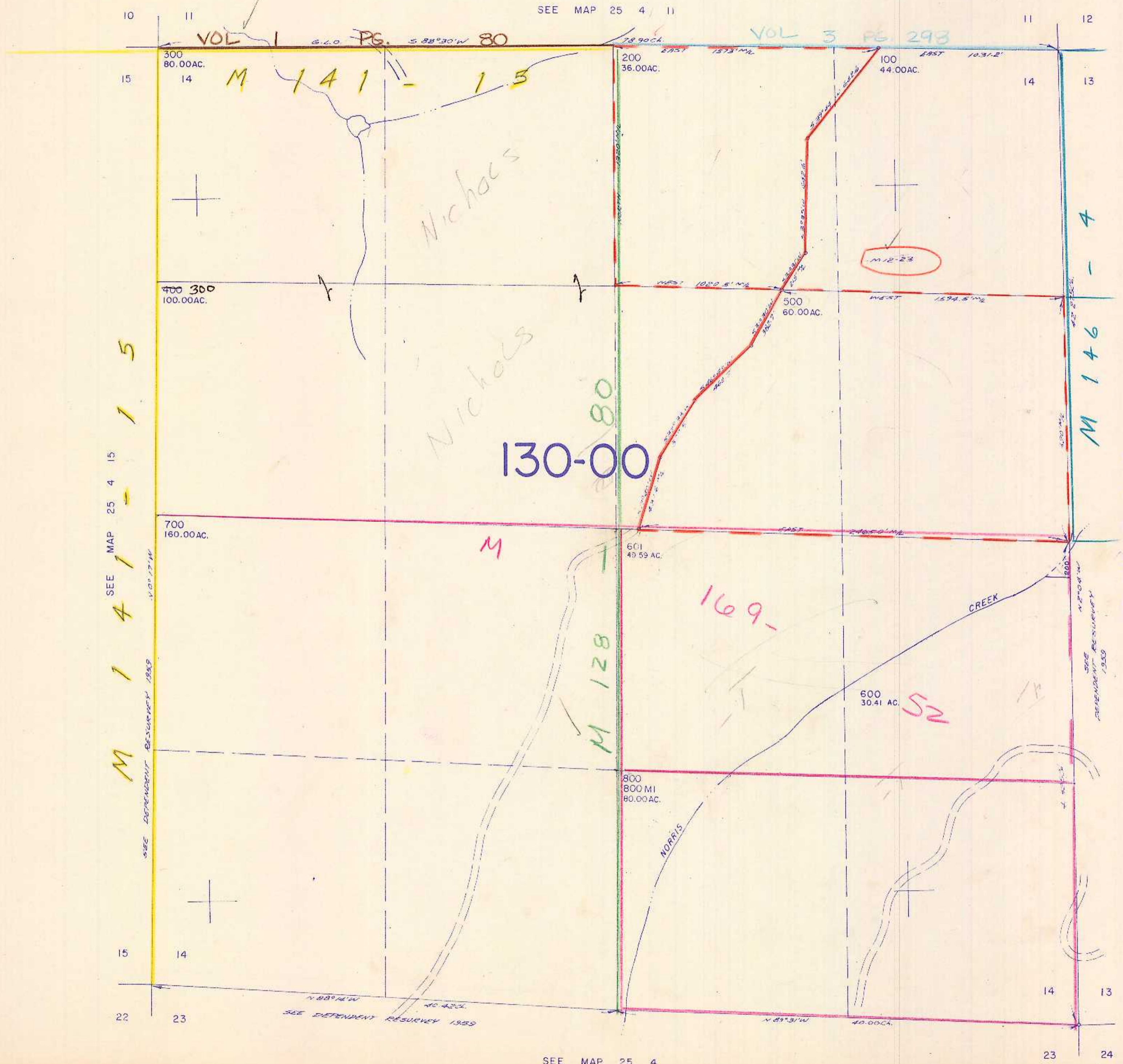


THIS MAP WAS PREPARED FOR ASSESSMENT PURPOSE ONLY.

SECTION 14 T.25S. R. 4 W. W.M.  
DOUGLAS COUNTY

25 4 14

1" = 400'



SEE MAP 25 4 15

SEE MAP 25 4 11

SEE MAP 25 4 11

M 141-15

15

22

300  
80.00AC.

14

400 300  
100.00AC.

700  
160.00AC.

14

23

SEE INDEPENDENT RESURVEY 1955

130-00

SEE MAP 25 4 11

200  
36.00AC.

14

500  
60.00AC.

601  
49.59 AC.

800  
800 MI  
80.00AC.

14

23

VOL 3 PG. 293

100  
44.00AC.

13

500  
60.00AC.

600  
30.41 AC.

800  
800 MI  
80.00AC.

14

23

M 12-23

52

800  
800 MI  
80.00AC.

14

23

1:301,000

SEE MAP 25 4 13

14

24

639,000

25 4 14

TF 881