

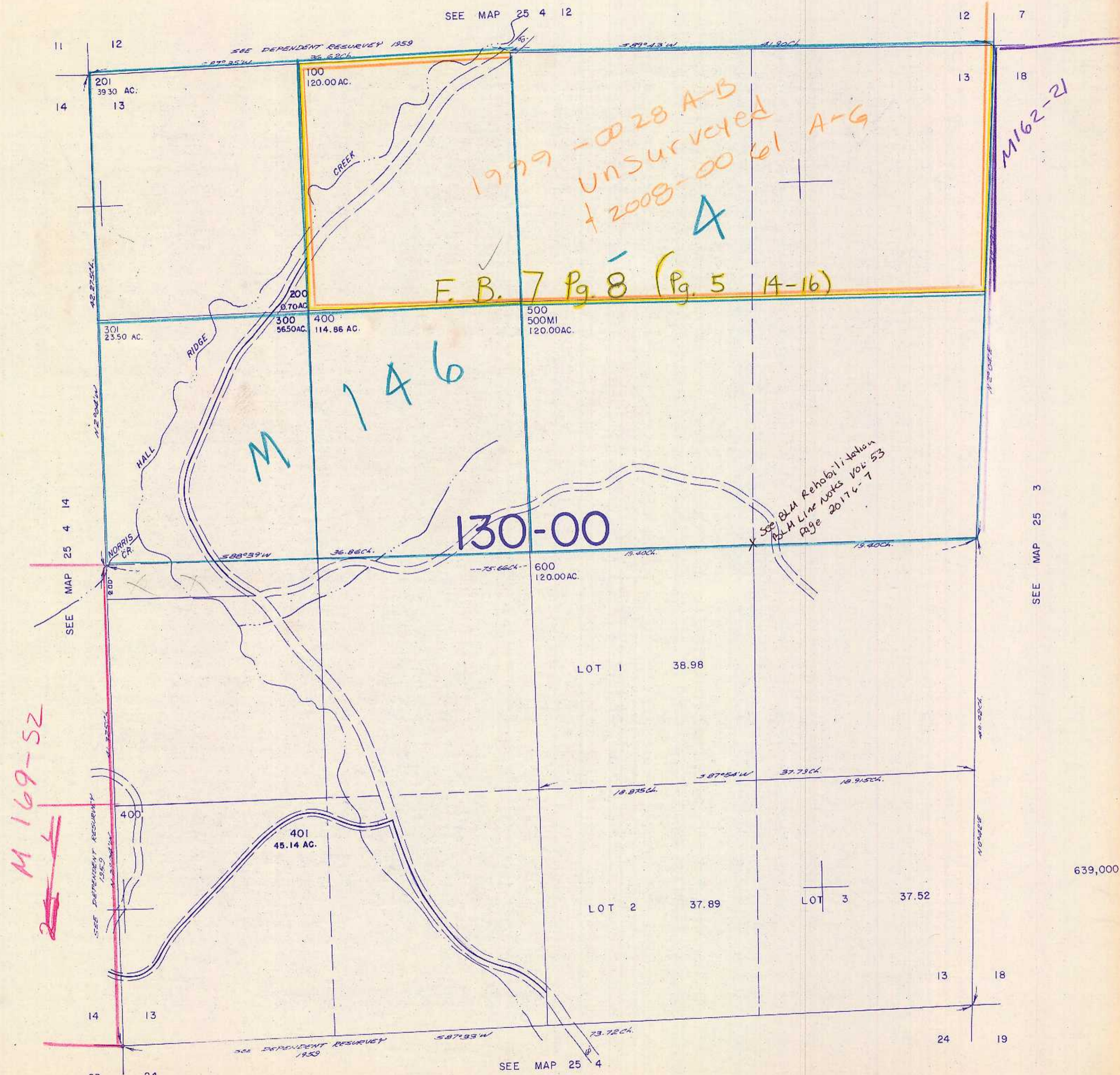
SECTION 13 T.25 S. R.4 W. W.M.  
DOUGLAS COUNTY

25 4 13

THIS MAP WAS PREPARED FOR  
ASSESSMENT PURPOSE ONLY.

1" = 400'

SEE MAP 25 4 12



SEE MAP 25 3

639,000

1,306,000

25 4 13

8/88 H.D.  
TFV