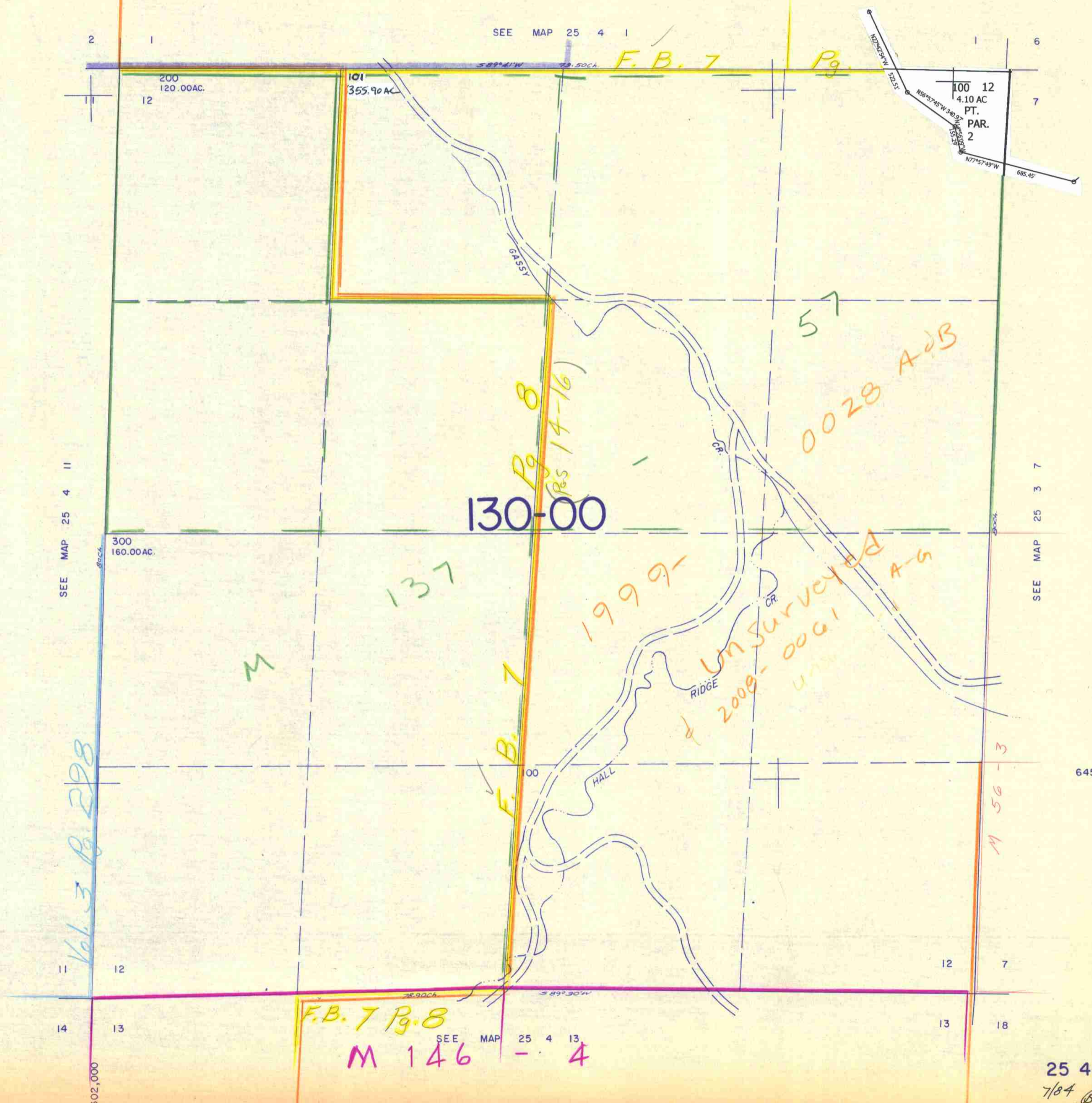


SECTION 12 T.25S. R. 4 W. W.M.  
DOUGLAS COUNTY

25 4 12

THIS MAP WAS PREPARED FOR  
ASSESSMENT PURPOSE ONLY.

1" = 400'



SEE MAP 25 4 1

F.B. 7 Pg.

200  
120.00AC.

101  
355.90AC

100 12  
4.10 AC  
PT.  
PAR.  
2

130-00

0028 A+B

1999-  
Unsurveyed  
& 2009-0001  
A-G

137

F.B. 7

Pg. 8  
(Res 14-16)

SEE MAP 25 4 11

SEE MAP 25 3 7

Vol. 3 Pg. 298

F.B. 7 Pg. 8

SEE MAP 25 4 13

M 146 - 4

645,000

25 4 12  
7/04 BS