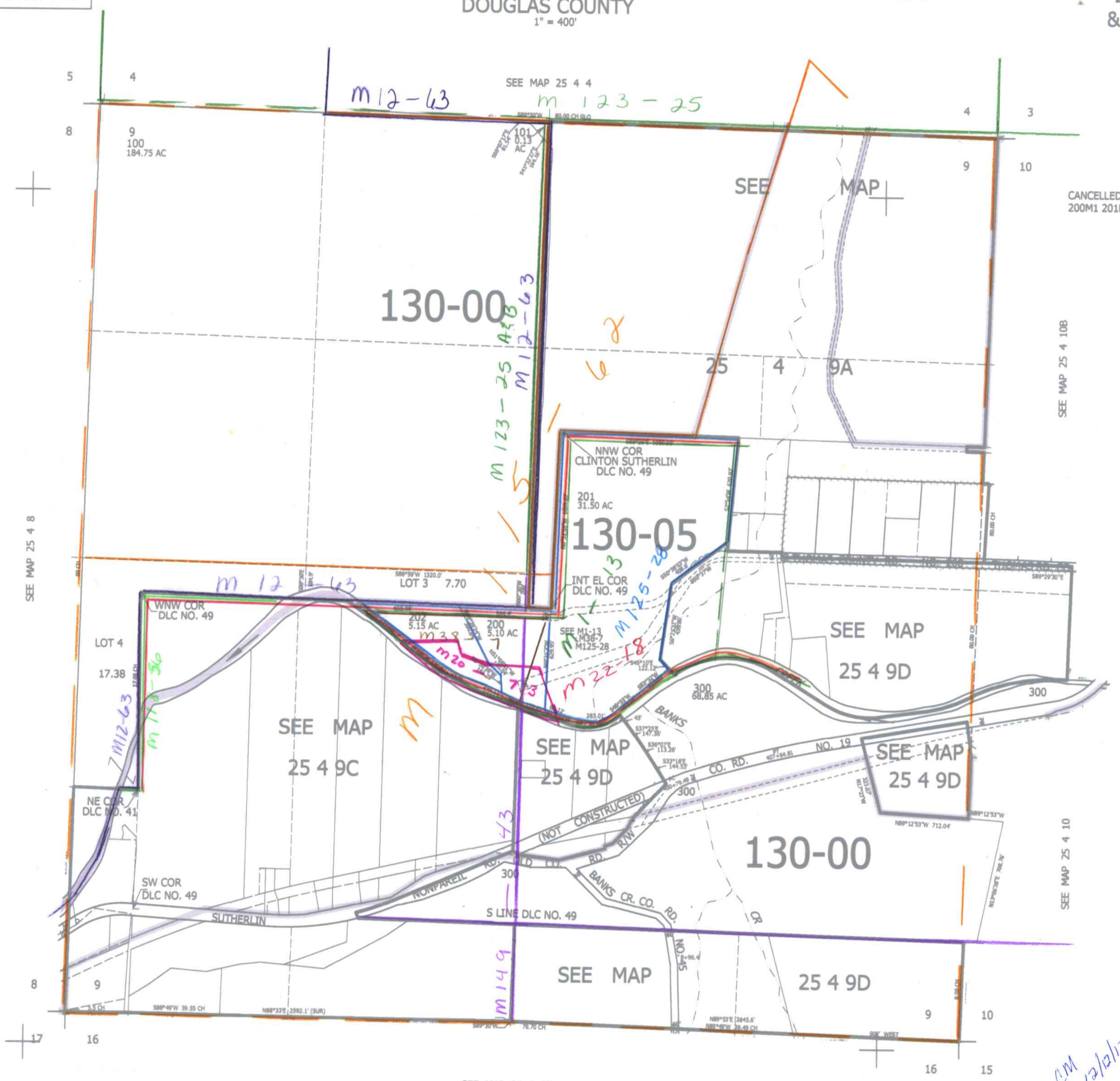


THIS MAP WAS PREPARED FOR ASSESSMENT PURPOSE ONLY.

SEC.9 T.25S. R.4W. W.M.  
DOUGLAS COUNTY  
1" = 400'

REVISED ON  
11-21-13

25 4 9  
& INDEX



CANCELLED NOS  
200M1 201M1 202M1

SEE MAP 25 4 10B

SEE MAP 25 4 8

SEE MAP 25 4 10

SEE MAP 25 4 16

CM 12/2/13 644,000

25 4 9  
& INDEX

4,212,000