

SEC.07 T.25S. R.04W. W.M. DOUGLAS COUNTY 1" = 400'

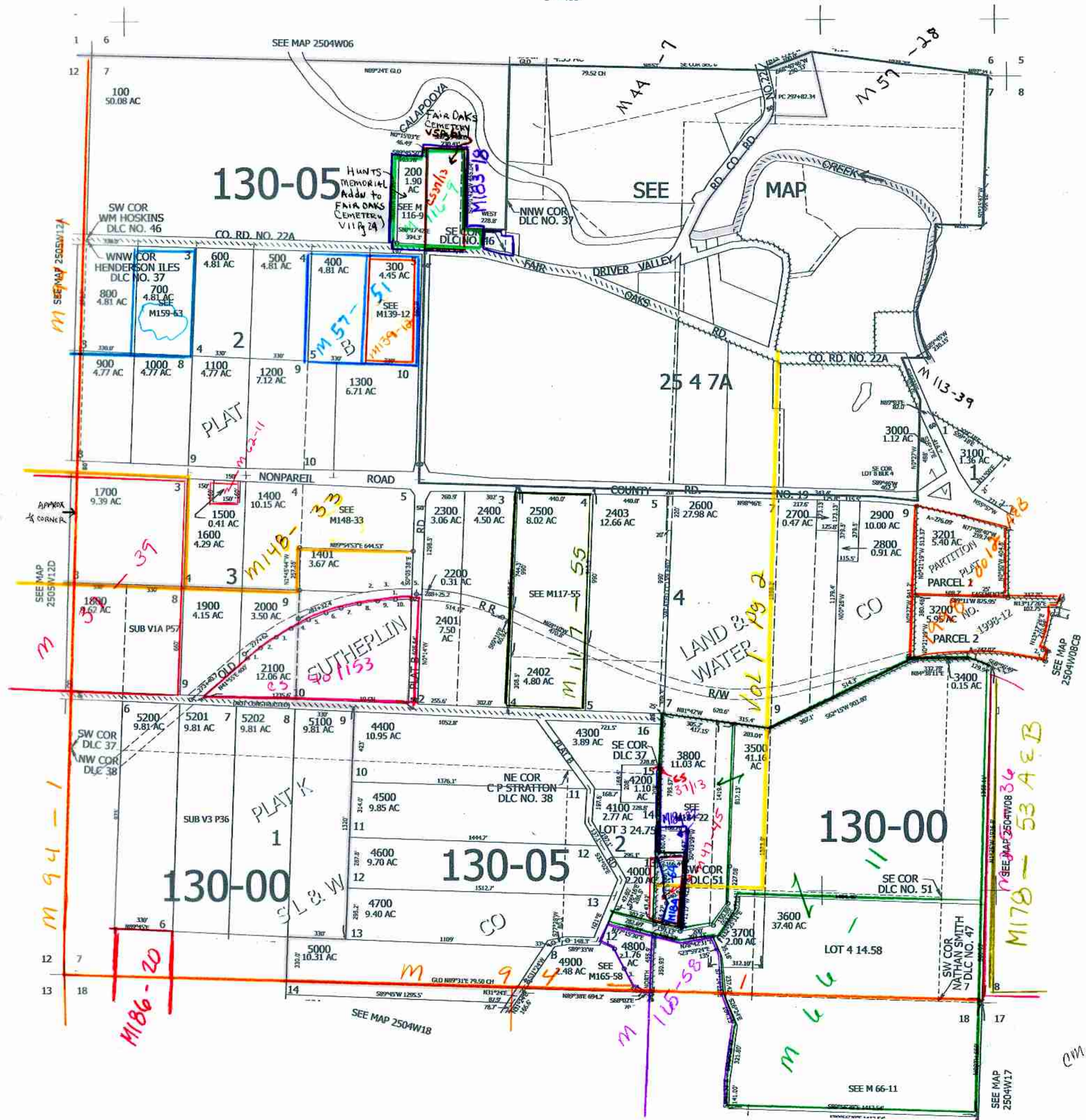
THIS MAP WAS PREPARED FOR ASSESSMENT PURPOSE ONLY. Upper Left: 123°13'55"W 43°25'7"N 4195603E 650277N R.

CANCELLED NOS: 2404 5300 2405 2406 2407 3300 3300M1 800M1 2100M1 3800M1 3900M1 4000M1 4100M1 5100M1 5200M1 1402 1403 3801 3900 4001

- PARCEL 2100
1. N89°50'E 100'
  2. N59°10'E 100'
  3. N58°10'E 100'
  4. N62°45'E 100'
  5. N66°58'E 106'
  6. N70°47'E 93'
  7. N74°45'E 100'
  8. N78°57'E 100'
  9. N83°05'E 100'
  10. N86°46'E 104'

- PARCEL 2000
1. WEST 290.8'
  2. N80°21'E 102.6'
  3. N84°22'E 102.1'
  4. N88°13'E 94.4'
  5. SOUTH 30'

- PARCEL 4800
1. S40°28'E 105.6'
  2. S30°10'E 124.7'
  3. S28°42'E 128.8'
  4. S68°02'E 150.7'



SEE MAP 2505W12A

SEE MAP 2505W12D

M 94-1

M 186-20

PLAT

PLAT K

GUTHEPLIN

LAND & WATER R/W

130-00

M 178-53 A & B

cm 1/23/13