

SECTION 4 T.25S. R. 4 W. W.M.
DOUGLAS COUNTY

REVISED ON
4-9-96

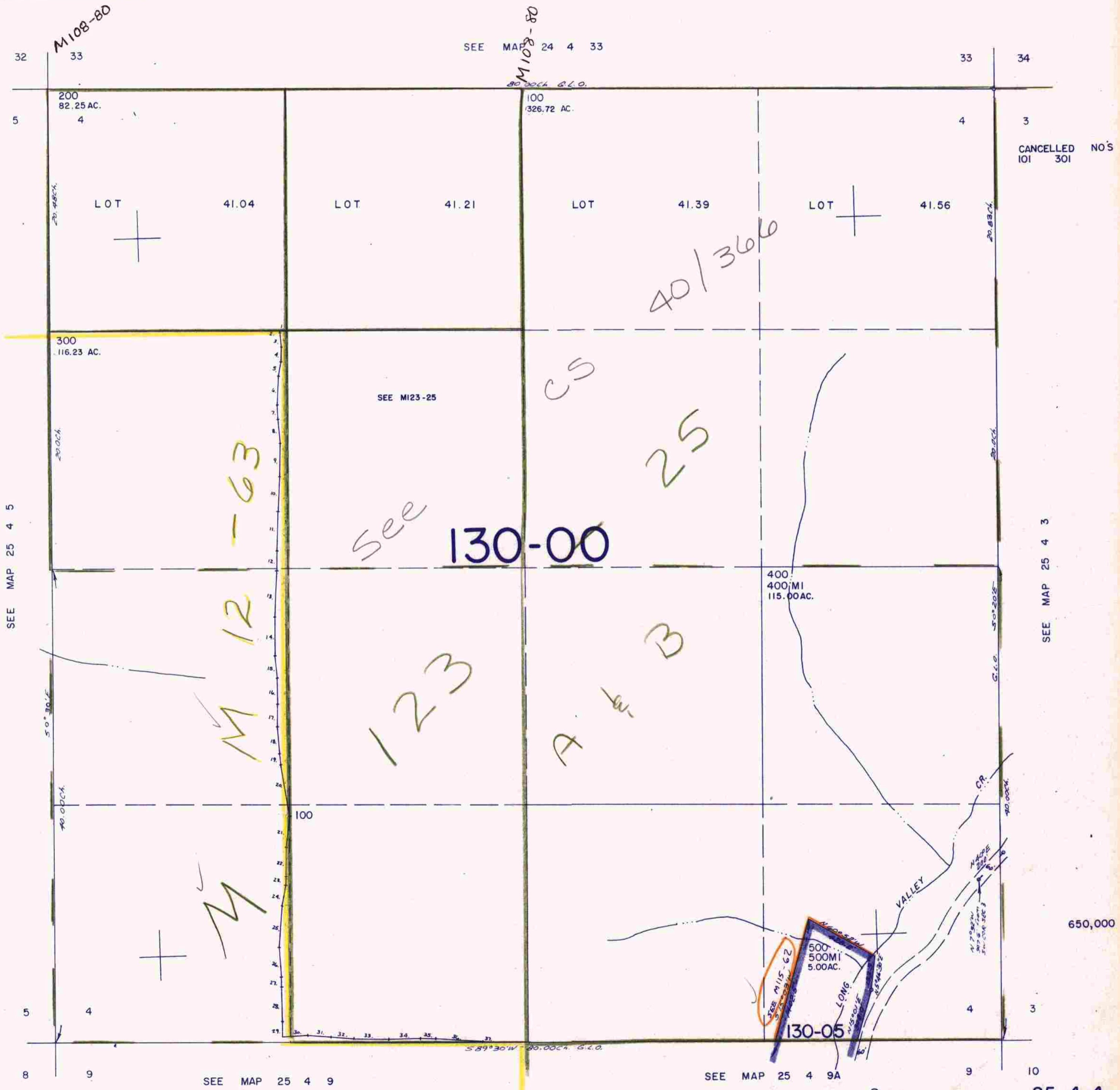
25 4 4

THIS MAP WAS PREPARED FOR
ASSESSMENT PURPOSE ONLY.

1" = 400'

PARCEL 100

1. N89°30'20"W	26.34'
2. S4°28'02"E	19.3'
3. S4°28'02"E	78.82'
4. S17°56'03"E	81.52'
5. S10°37'25"W	80.19'
6. S8°17'54"W	155.73'
7. S32°46'02"E	78.2'
8. S3°43'13"E	134.27'
9. S13°32'44"W	179.16'
10. S2°44'27"W	172.42'
11. S2°18'46"W	217.31'
12. S0°48'23"W	111.62'
13. S3°00'32"W	253.87'
14. S0°14'4"W	218.82'
15. S5°36'39"E	123.75'
16. S0°13'13"E	147.94'
17. S2°09'45"W	125.79'
18. S4°13'21"E	149.8'
19. S4°24'02"E	62.73'
20. S9°14'13"E	293.41'
21. S7°01'53"W	166.73'
22. S0°32'05"W	160.68'
23. S2°26'35"W	48.8'
24. S10°53'48"W	117.92'
25. S4°02'31"W	227.65'
26. S3°13'35"E	162.79'
27. S2°24'35"E	55.21'
28. S0°52'30"E	174.27'
29. S0°44'12"W	92.12'
30. N86°41'20"E	143.43'
31. S85°27'15"E	126.68'
32. S85°04'49"E	131.02'
33. S89°17'46"E	193.98'
34. N89°05'57"E	174.73'
35. S86°31'43"E	87.71'
36. S86°38'45"E	262.73'
37. S85°26'12"E	164.94'



CANCELLED NO'S
101 301

SEE MAP 25 4 3

650,000

25 4 4

1,291,000

4/96
AC