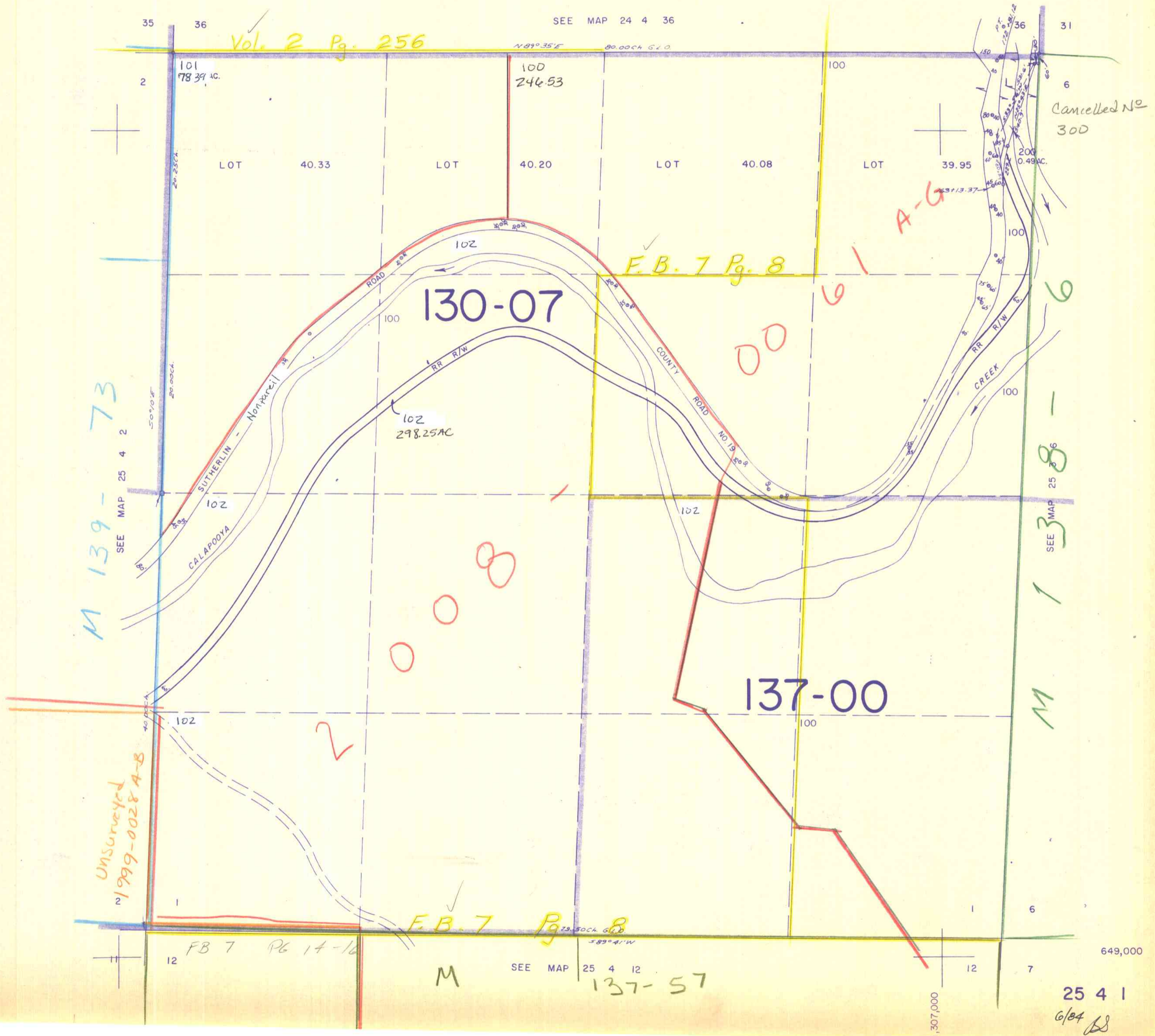


SECTION 1 T.25S. R. 4 W. W.M.
DOUGLAS COUNTY

25 4 1

THIS MAP WAS PREPARED FOR
ASSESSMENT PURPOSE ONLY.

1" = 400'



Cancelled No
300

M 139-73

Vol. 2 Pg. 256

F.B. 7 Pg. 8

A-6

00

61

6

M 138-6

Unsurveyed
2/1999-0028 A-B

F.B. 7 Pg. 8

M

137-57

25 4 1

6/84