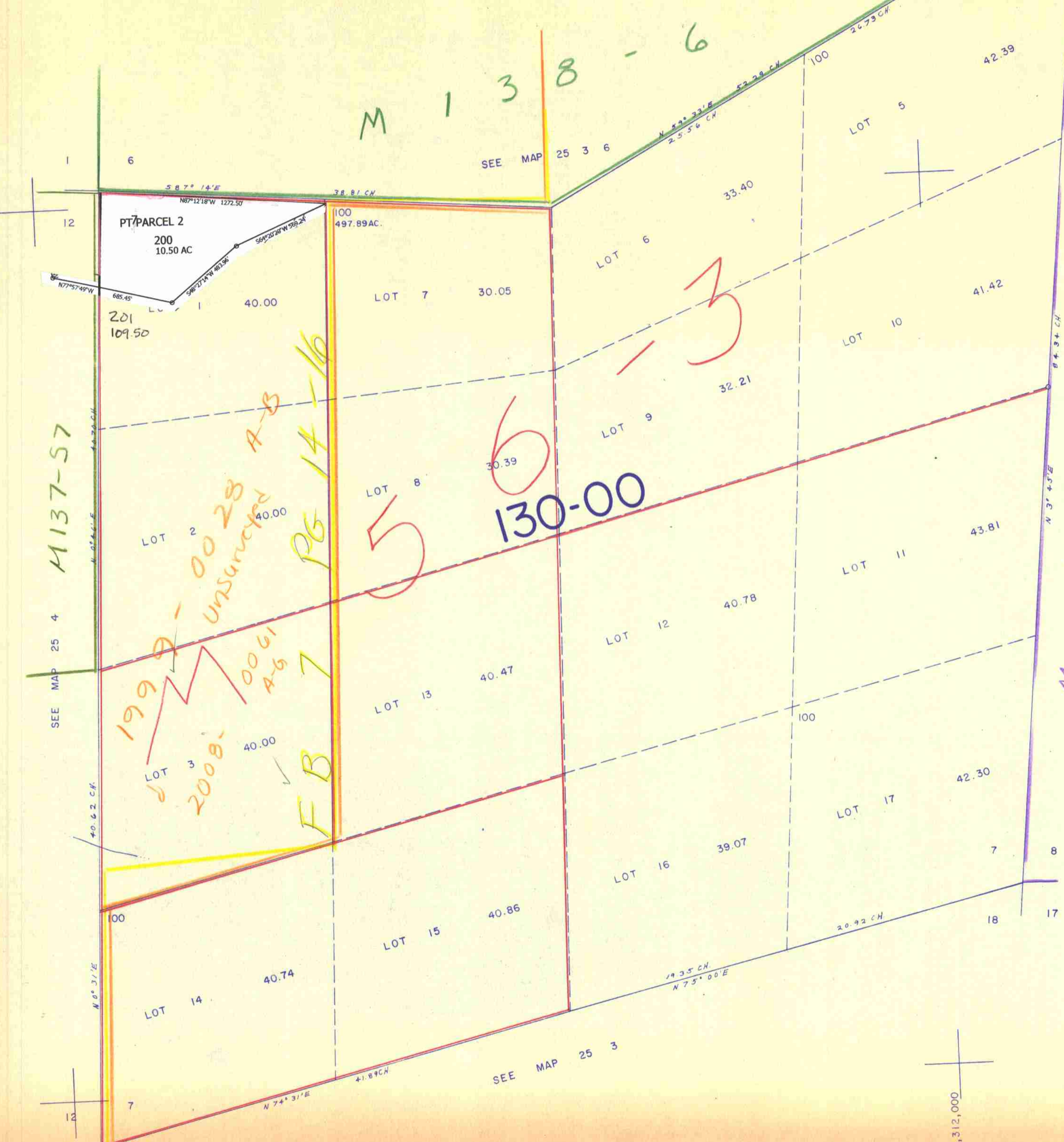


THIS MAP WAS PREPARED FOR
ASSESSMENT PURPOSE ONLY.

SECTION 7 T.25S. R.3 W. W.M.
DOUGLAS COUNTY

1" = 400'

25 3 7



M137-57

SEE MAP 25 4

12

13

SEE MAP 25 3

SEE MAP 25 3

644,000

25 3 7

2/84 BS

1,312,000