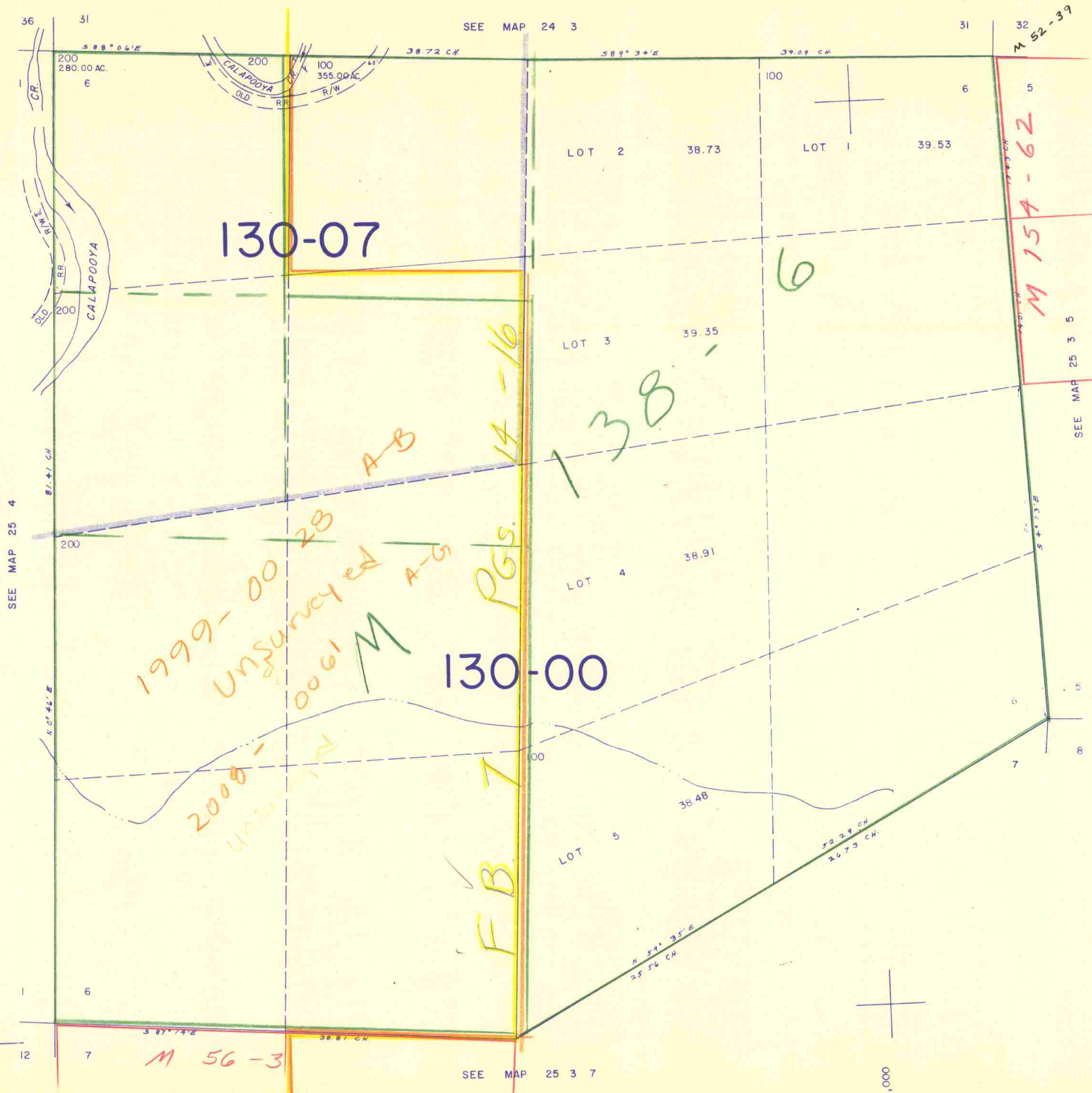


THIS MAP WAS PREPARED FOR ASSESSMENT PURPOSE ONLY.

SECTION 6 T.25S. R. 3 W. W.M. DOUGLAS COUNTY

25 3 6

1" = 400'



130-07

130-00

F B 7 P G S. 14-16

1999-00 28 UNSURVEYED A-B
2008-00 00 00 00 UNSURVEYED A-B
M

M 15A-62

M 56-3

SEE MAP 25 4

SEE MAP 24 3

SEE MAP 25 3 5

SEE MAP 25 3 7

649,000

1,312,000

25 3 6

2/04 88