

THIS MAP WAS PREPARED FOR ASSESSMENT PURPOSE ONLY

SEC. T.24S. R.9 W. W.M. DOUGLAS COUNTY

REVISED ON

24 9 00

SEE MAP 23 9 00

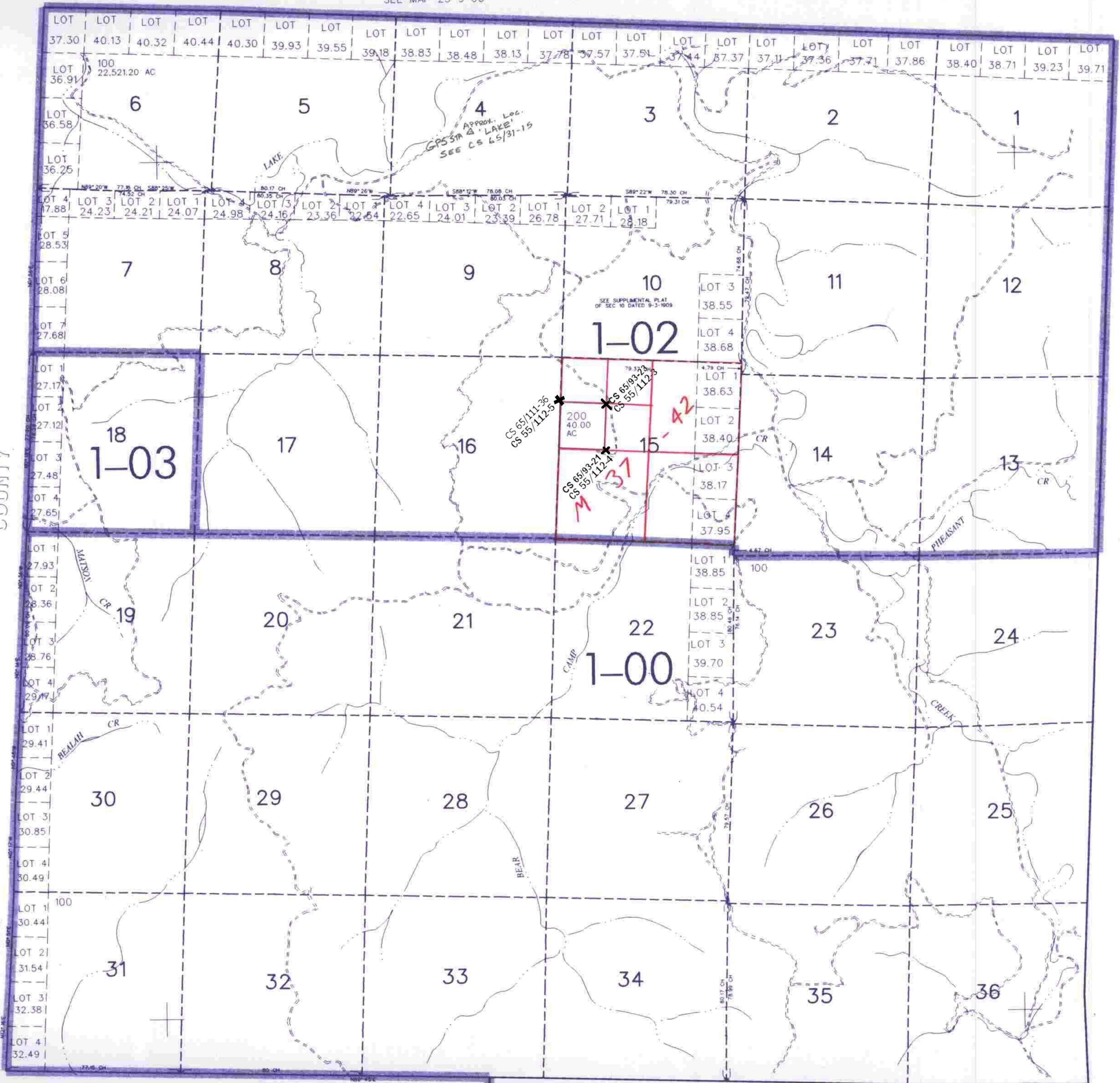
1"=2000'

CANCELLED NO'S 100M1 100M2

SEE MAP 24 8 00

662.000

4,070,000



COOS COUNTY

SEE MAP 25 9 00

24 9 00
12/01 JP