

SECTION 33 T.24S. R.7W. W.M.
DOUGLAS COUNTY

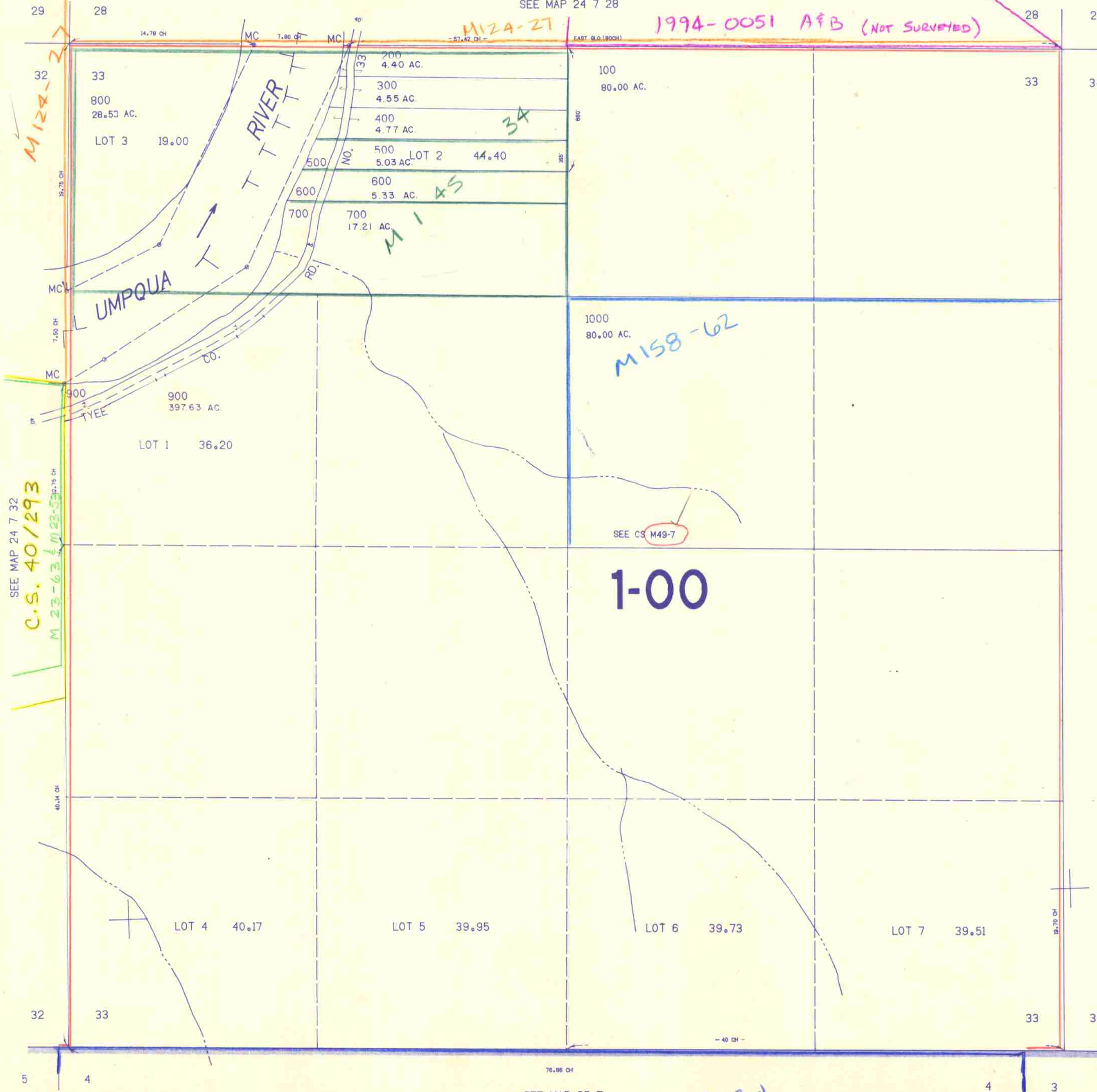
24 7 33

THIS MAP WAS PREPARED FOR
ASSESSMENT PURPOSE ONLY.

1"=400'

SEE MAP 24 7 28

1994-0051 A&B (NOT SURVEYED)



SEE MAP 24 7 32
C.S. 40/293
M 23-63 & M 23-53

SEE CS M49-7

1-00

M158-62

M124-27

M145

M162-1

SEE MAP 25 7

SEE MAP 24 7

24 7 33

XL 7/89

659,000

1,197,000