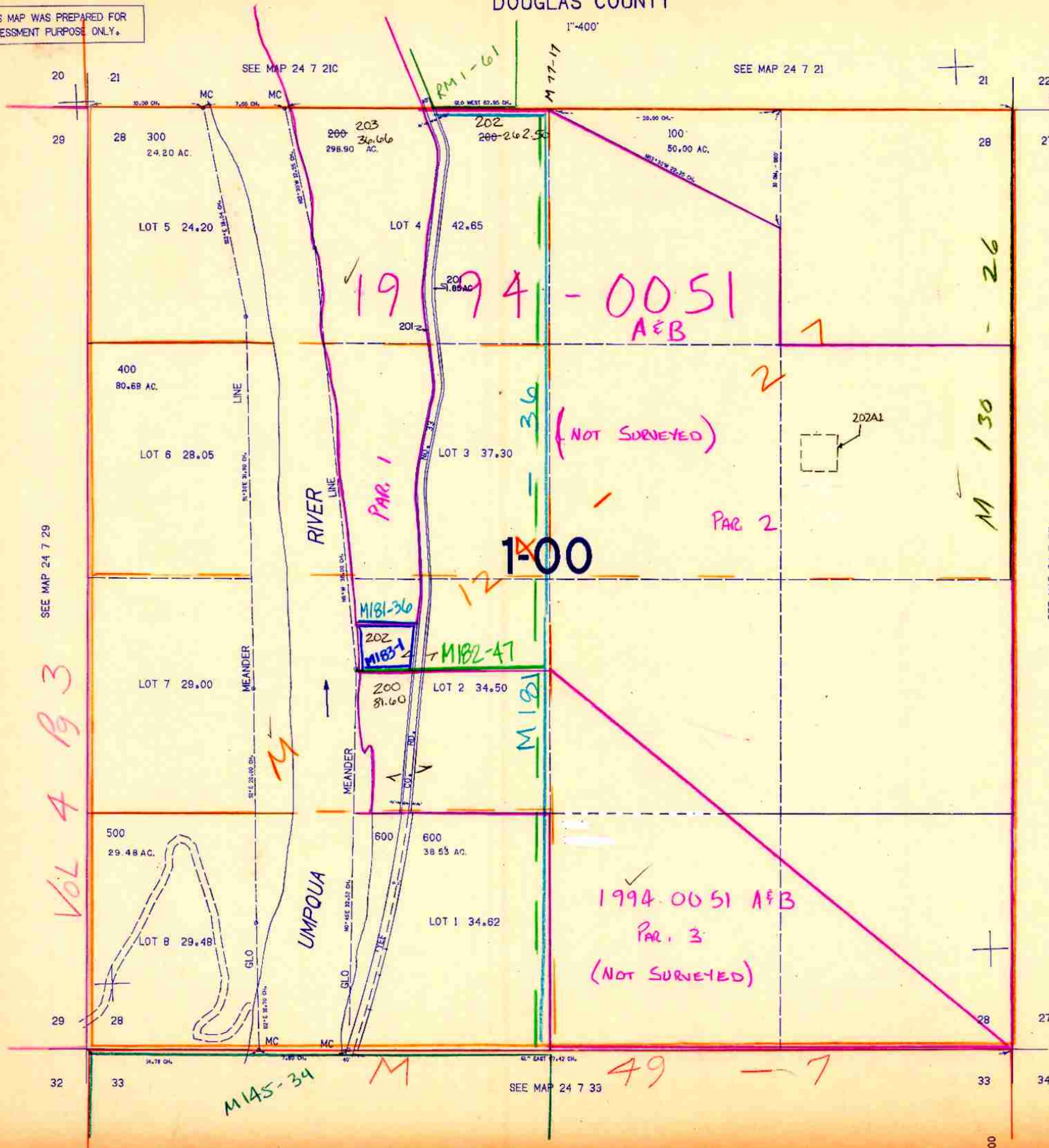


SECTION 28 T.24S. R.7W. W.M.
DOUGLAS COUNTY

REVISED ON
5-2-94

24 7 28

THIS MAP WAS PREPARED FOR
ASSESSMENT PURPOSE ONLY.



SEE MAP 24 7 29

SEE MAP 24 7 27

VOL 4 193

1994-0051
A&B

(NOT SURVEYED)

1:00

1994-0051 A&B
PAR. 3
(NOT SURVEYED)

49-7

M 130 - 26

M 111-1

Cancelled Nos
201 700

664.000

24 7 28

197,000

sp 5/19/94