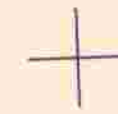


SECTION 27 T.24S. R.7W. W.M.
DOUGLAS COUNTY

24 7 27

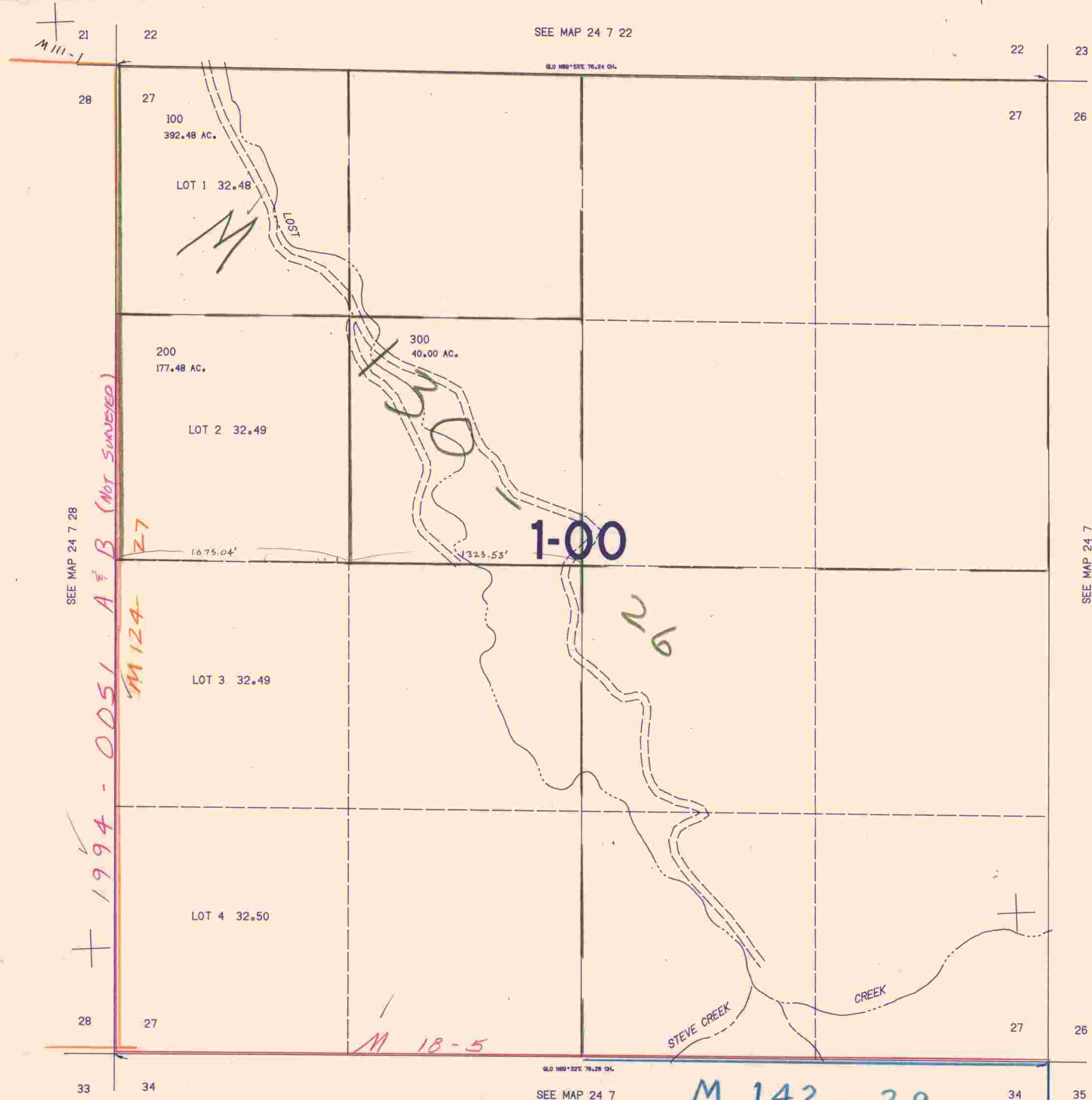
THIS MAP WAS PREPARED FOR
ASSESSMENT PURPOSE ONLY.

1"=400'



SEE MAP 24 7 22

G.L.O. N88°55'E 76.24 CH.



664.000

M 142 - 29

24 7 27

10/83 BB

1202.000