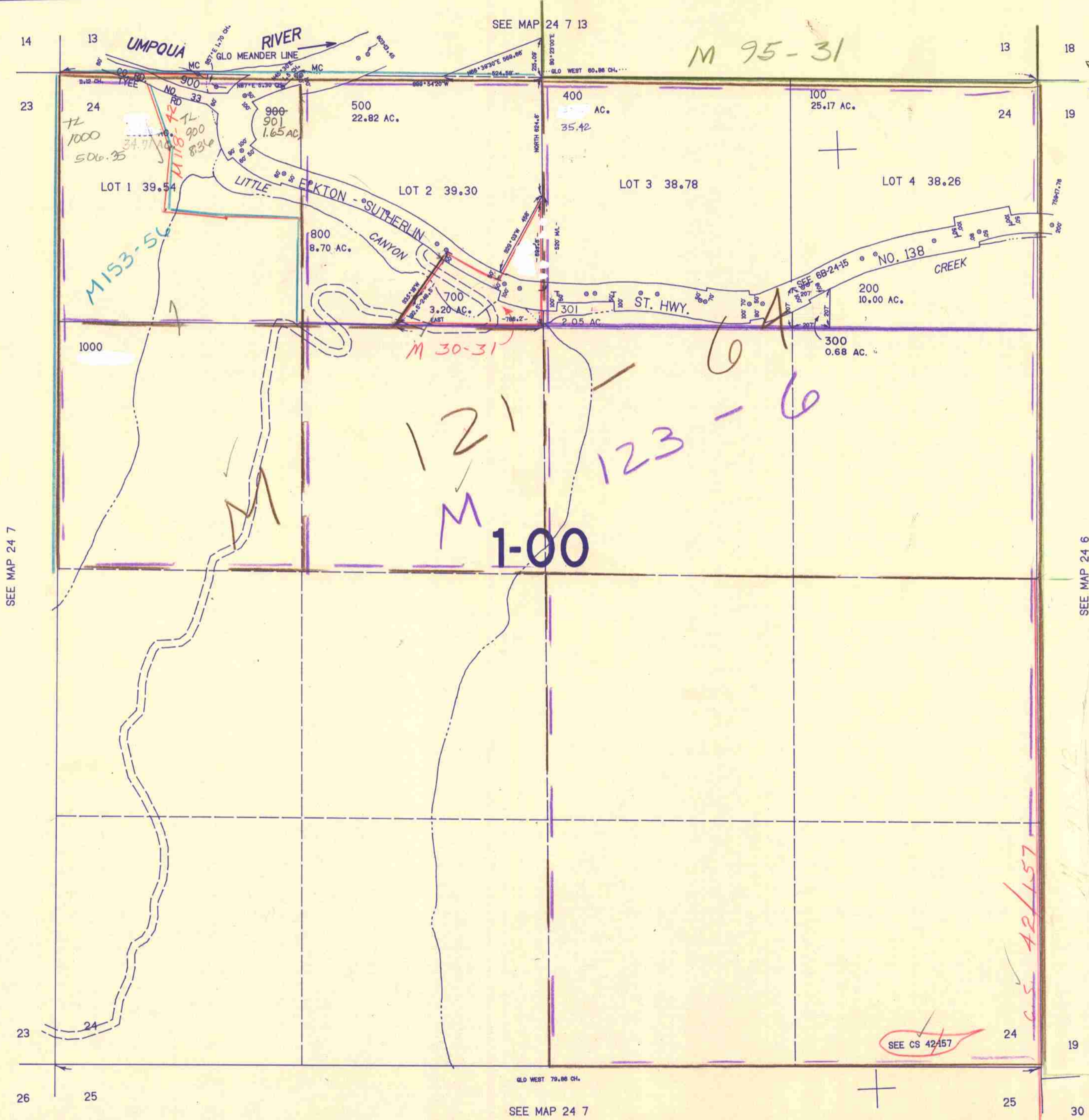


SECTION 24 T.24S. R.7W. W.M.
DOUGLAS COUNTY

24 7 24

THIS MAP WAS PREPARED FOR
ASSESSMENT PURPOSE ONLY.

1"=400'



SEE MAP 24 7

SEE MAP 24 6

SEE MAP 24 7

1,212,000

24 7 24

10/83