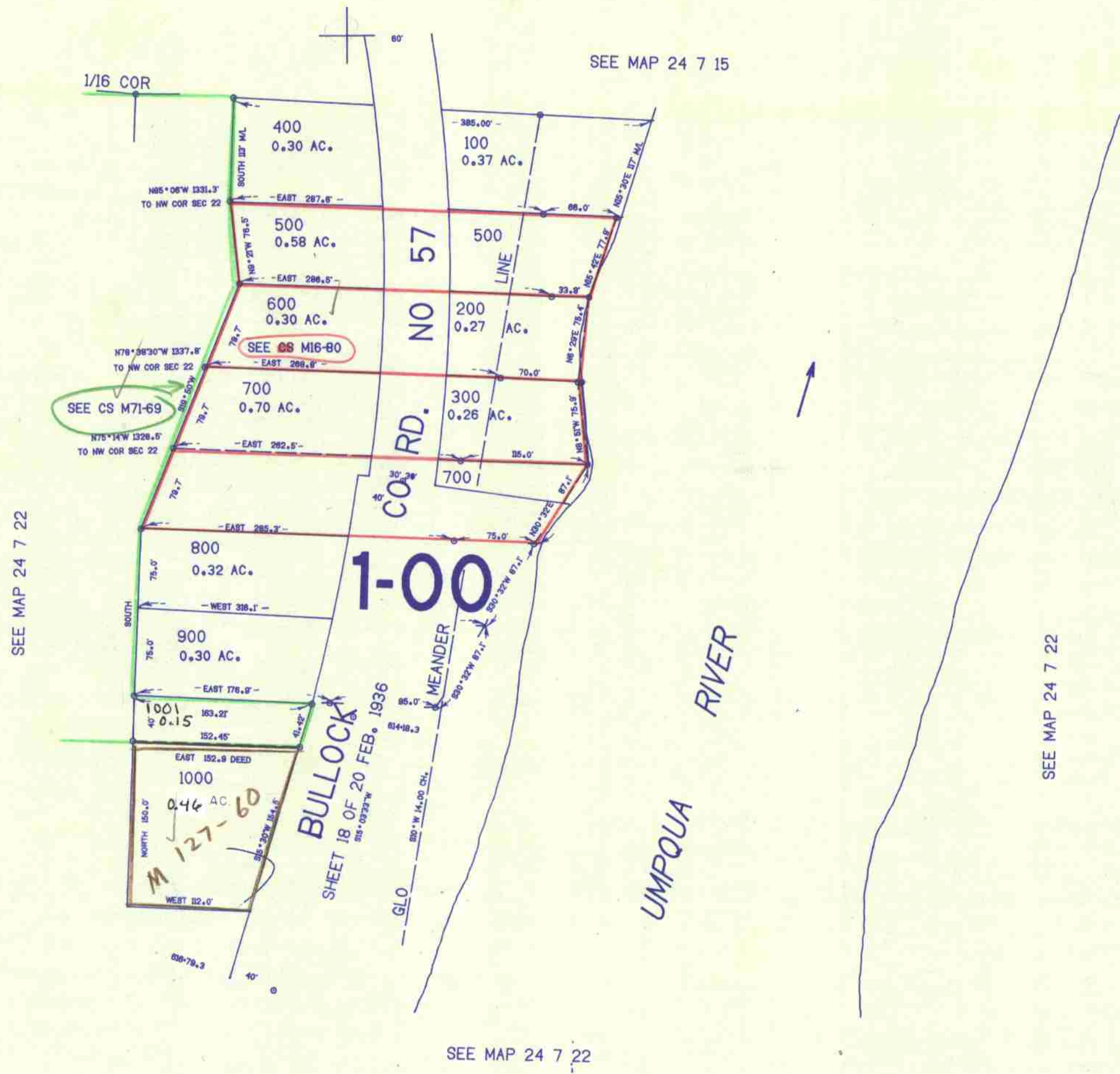


NE1/4 NW1/4 SEC.22 T.24S. R.7W. W.M.
DOUGLAS COUNTY

24 7 22BA

THIS MAP WAS PREPARED FOR
ASSESSMENT PURPOSE ONLY.

1"=100'



673.000

24 7 22BA

200.000

Handwritten notes and initials at the bottom right corner.