

SECTION 22 T.24S. R.7W. W.M.
DOUGLAS COUNTY

24 7 22
& INDEX

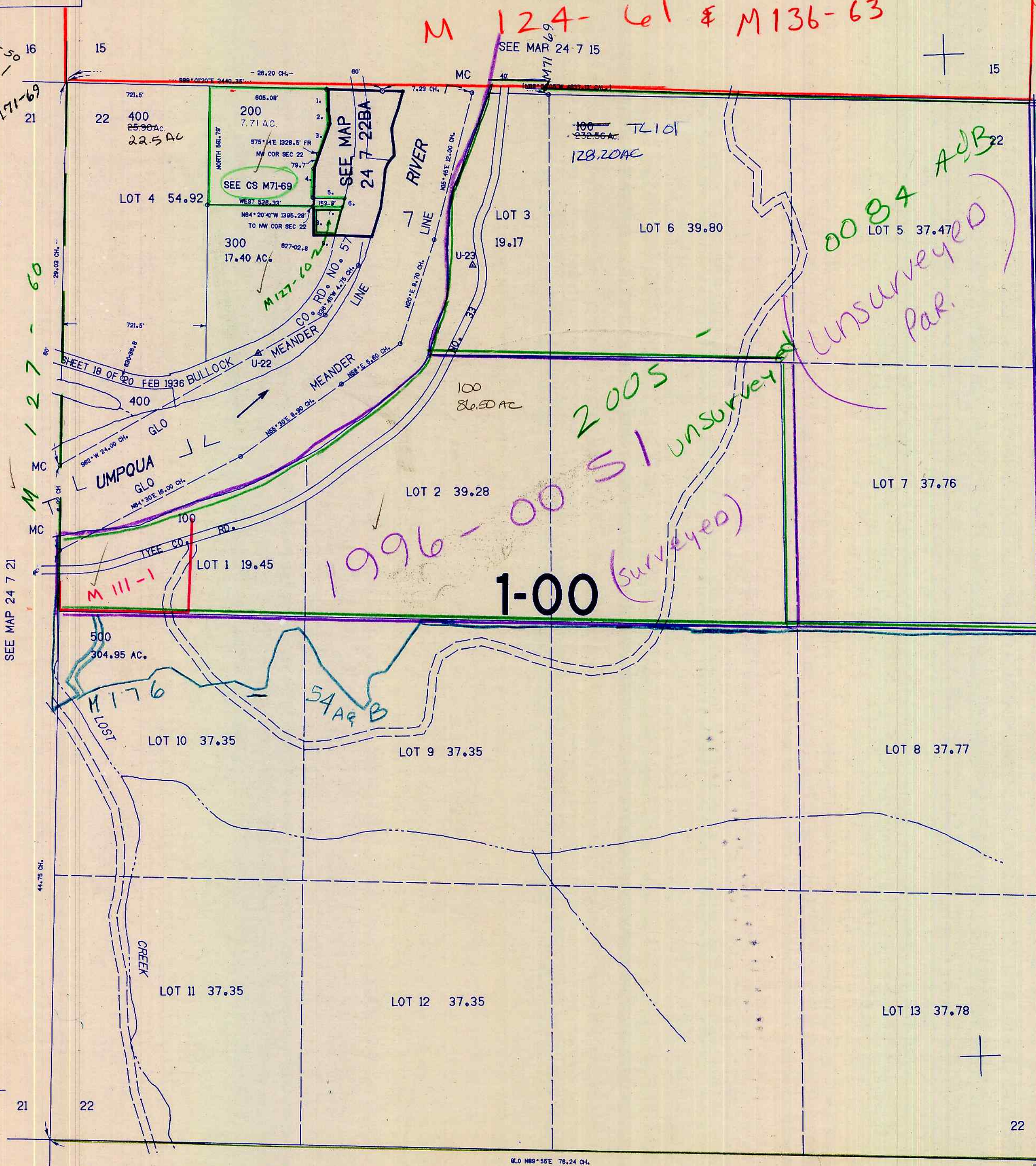
THIS MAP WAS PREPARED FOR
ASSESSMENT PURPOSE ONLY.

1"=400'

M 39-50
M III-1
M 71-69

M 124-61 & M 136-63

1. SOUTH 91.10'
2. 88° 08' 41" E 77.01'
3. S18° 50' W 238.47'
4. SOUTH 150.0'
5. EAST 185.21'
6. S35° 03' 33" W 41.42'
7. WEST 152.45'
8. SOUTH 150'
9. EAST 114.00'



SEE MAP 24 7 21

SEE MAP 24 7

M III-1

M 130 - 26

24 7 22
& INDEX

669,000

202,000

9/90
Lamm
27