

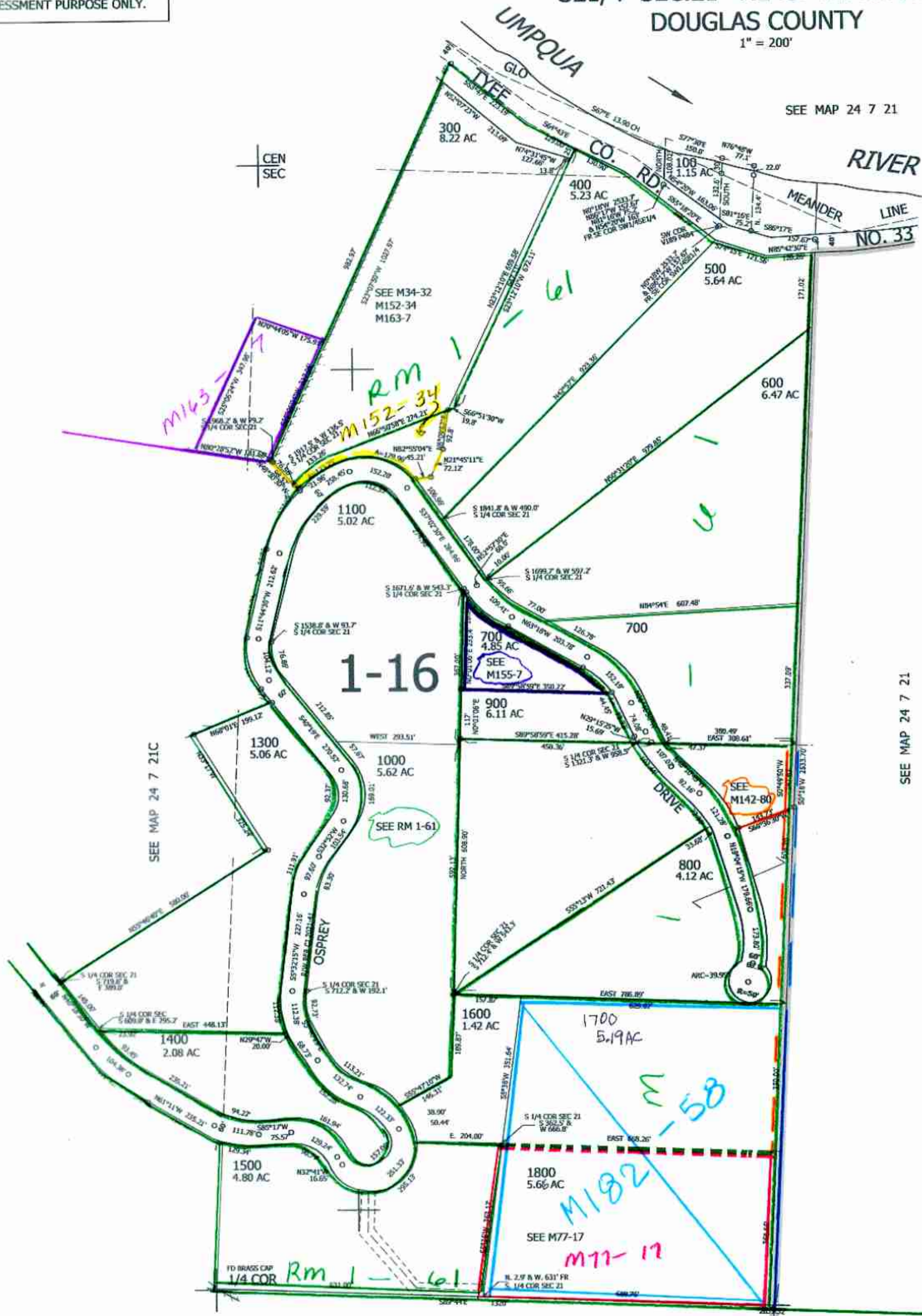
THIS MAP WAS PREPARED FOR ASSESSMENT PURPOSE ONLY.

SE1/4 SEC.21 T.24S. R.7W. W.M.  
DOUGLAS COUNTY

REVISED ON  
3-18-21

24 7 21D

1" = 200'



CANCELLED NOS  
200 1501 801  
701 301 401  
702 1200 802

669,000

CMC  
1/25/12  
JCV

21  
22  
27  
28

M34-32

24 7 21D