

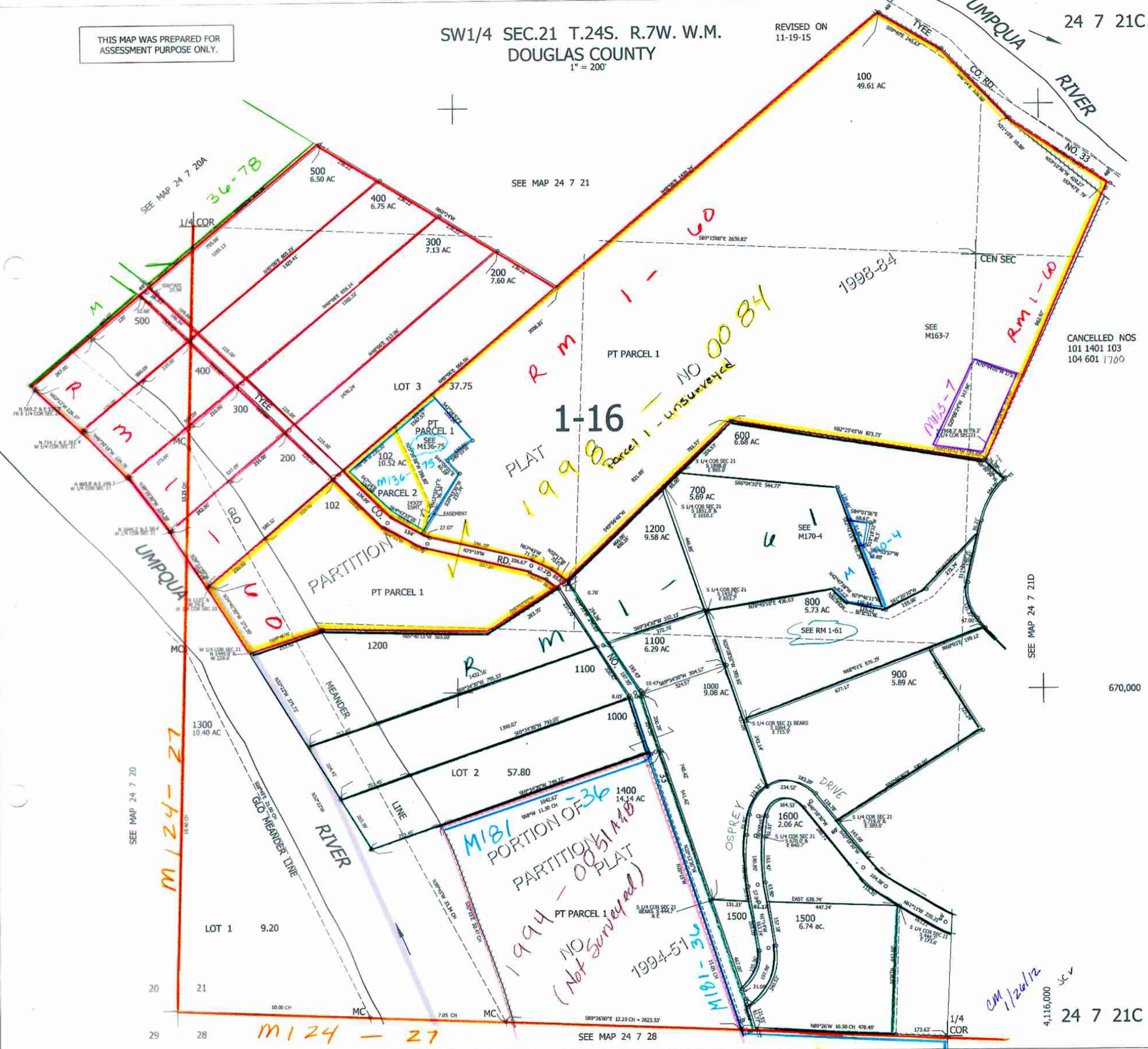
THIS MAP WAS PREPARED FOR ASSESSMENT PURPOSE ONLY.

SW1/4 SEC.21 T.24S. R.7W. W.M. DOUGLAS COUNTY

1" = 200'

REVISED ON 11-19-15

24 7 21C



CANCELLED NOS
101 1401 103
104 601 1700

SEE MAP 24 7 21D

670,000

CM 1/26/12

4,116,000

24 7 21C

SEE MAP 24 7 20

SEE MAP 24 7 21

SEE MAP 24 7 28

M124 - 27

M181 - 36
PORTION OF
PARTITION
1994 - 0051A/B
PLAT
(Not Surveyed)

1-16
PLAT
1998-84
Parcel 1 - unsurveyed

Rm 1-61

SEE MAP 24 7 20A
36-78

M124-27

M181-36
1994-51

M163-7

SEE RM 1-61

SEE M170-4

PT PARCEL 1
SEE M136-75

PT PARCEL 2
SEE M136-75

PT PARCEL 1

PT PARCEL 1

PT PARCEL 1

1/4 COR

MC

20

21

29

28

1/4 COR

CEN SEC

SEE M163-7

1998-84

NO 0084

600 6.88 AC

700 5.69 AC

1200 9.58 AC

1100 6.29 AC

1100 6.29 AC

1000 9.08 AC

1000 9.08 AC

1400 14.24 AC

1500 6.74 AC

1500 6.74 AC

1500 6.74 AC

1500 6.74 AC

500 6.50 AC

400 6.75 AC

300 7.13 AC

200 7.60 AC

LOT 3 37.75

102 10.52 AC

1200 9.58 AC

LOT 2 57.80

LOT 1 9.20

100 49.61 AC

600 6.88 AC

700 5.69 AC

1200 9.58 AC

1100 6.29 AC

1100 6.29 AC

1000 9.08 AC

1000 9.08 AC

1400 14.24 AC

1500 6.74 AC

1500 6.74 AC

1500 6.74 AC

1500 6.74 AC

LOT 3 37.75

102 10.52 AC

1200 9.58 AC

LOT 2 57.80

LOT 1 9.20

1000 9.08 AC

1000 9.08 AC

1/4 COR

MC

20

21

29

28

1/4 COR

CEN SEC

SEE M163-7

1998-84

NO 0084

600 6.88 AC

700 5.69 AC

1200 9.58 AC

1100 6.29 AC

1100 6.29 AC

1000 9.08 AC

1000 9.08 AC

1400 14.24 AC

1500 6.74 AC

1500 6.74 AC

1500 6.74 AC

1500 6.74 AC

500 6.50 AC

400 6.75 AC

300 7.13 AC

200 7.60 AC

LOT 3 37.75

102 10.52 AC

1200 9.58 AC

LOT 2 57.80

LOT 1 9.20

100 49.61 AC

600 6.88 AC

700 5.69 AC

1200 9.58 AC

1100 6.29 AC

1100 6.29 AC

1000 9.08 AC

1000 9.08 AC

1400 14.24 AC

1500 6.74 AC

1500 6.74 AC

1500 6.74 AC

1500 6.74 AC

1/4 COR

MC

20

21

29

28

1/4 COR

CEN SEC

SEE M163-7

1998-84

NO 0084

600 6.88 AC

700 5.69 AC

1200 9.58 AC

1100 6.29 AC

1100 6.29 AC

1000 9.08 AC

1000 9.08 AC

1400 14.24 AC

1500 6.74 AC

1500 6.74 AC

1500 6.74 AC

1500 6.74 AC

500 6.50 AC

400 6.75 AC

300 7.13 AC

200 7.60 AC

LOT 3 37.75

102 10.52 AC

1200 9.58 AC

LOT 2 57.80

LOT 1 9.20

100 49.61 AC

600 6.88 AC

700 5.69 AC

1200 9.58 AC

1100 6.29 AC

1100 6.29 AC

1000 9.08 AC

1000 9.08 AC

1400 14.24 AC

1500 6.74 AC

1500 6.74 AC

1500 6.74 AC

1500 6.74 AC

1/4 COR

MC

20

21

29

28

1/4 COR

CEN SEC

SEE M163-7

1998-84

NO 0084

600 6.88 AC

700 5.69 AC

1200 9.58 AC

1100 6.29 AC

1100 6.29 AC

1000 9.08 AC

1000 9.08 AC

1400 14.24 AC

1500 6.74 AC

1500 6.74 AC

1500 6.74 AC

1500 6.74 AC

500 6.50 AC

400 6.75 AC

300 7.13 AC

200 7.60 AC

LOT 3 37.75

102 10.52 AC

1200 9.58 AC

LOT 2 57.80

LOT 1 9.20

100 49.61 AC

600 6.88 AC

700 5.69 AC

1200 9.58 AC

1100 6.29 AC

1100 6.29 AC

1000 9.08 AC

1000 9.08 AC

1400 14.24 AC

1500 6.74 AC

1500 6.74 AC

1500 6.74 AC

1500 6.74 AC

1/4 COR

MC

20

21

29

28

1/4 COR

CEN SEC

SEE M163-7

1998-84

NO 0084

600 6.88 AC

700 5.69 AC

1200 9.58 AC

1100 6.29 AC

1100 6.29 AC

1000 9.08 AC

1000 9.08 AC

1400 14.24 AC

1500 6.74 AC

1500 6.74 AC

1500 6.74 AC

1500 6.74 AC

500 6.50 AC

400 6.75 AC

300 7.13 AC

200 7.60 AC

LOT 3 37.75

102 10.52 AC

1200 9.58 AC

LOT 2 57.80

LOT 1 9.20

100 49.61 AC

600 6.88 AC

700 5.69 AC

1200 9.58 AC

1100 6.29 AC

1100 6.29 AC

1000 9.08 AC

1000 9.08 AC

1400 14.24 AC

1500 6.74 AC

1500 6.74 AC

1500 6.74 AC

1500 6.74 AC

1/4 COR

MC

20

21

29

28

1/4 COR

CEN SEC

SEE M163-7

1998-84

NO 0084

600 6.88 AC

700 5.69 AC

1200 9.58 AC

1100 6.29 AC

1100 6.29 AC

1000 9.08 AC

1000 9.08 AC

1400 14.24 AC

1500 6.74 AC

1500 6.74 AC

1500 6.74 AC

1500 6.74 AC

500 6.50 AC

400 6.75 AC

300 7.13 AC