

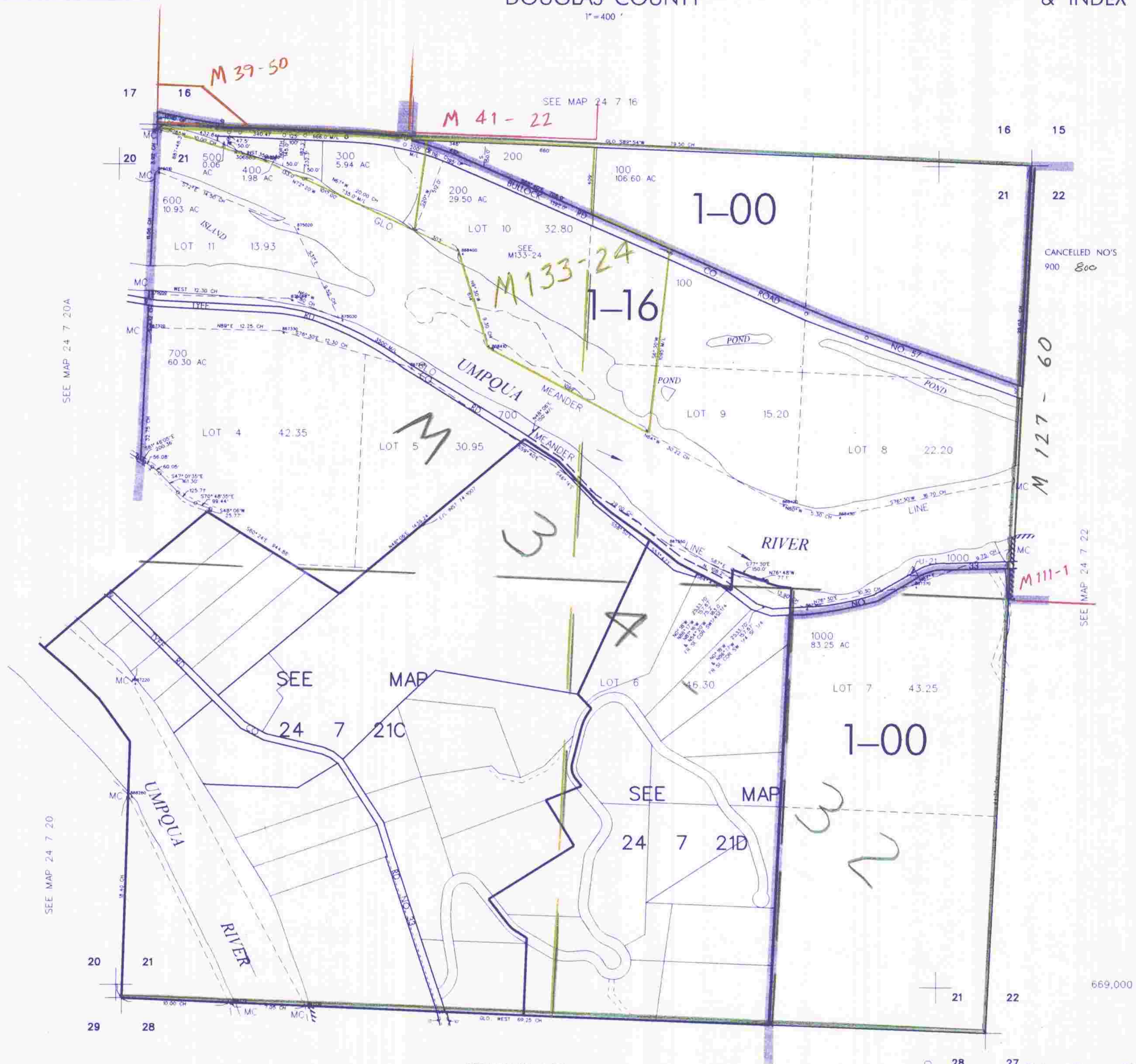
THIS MAP WAS PREPARED FOR
ASSESSMENT PURPOSE ONLY

SEC. 21 T.24S. R.7 W. W.M.
DOUGLAS COUNTY

REVISED ON
7-12-02

24 7 21
& INDEX

1" = 400'



CANCELLED NO'S
900 800

SEE MAP 24 7 22

669,000

4,118,000

24 7 21
& INDEX
7/2002 SP

SEE MAP 24 7 28

SEE MAP 24 7 20

SEE MAP 24 7 20A

SEE MAP
24 7 21C

SEE MAP
24 7 21D

28

27

29

28

21

22

17

16

16

15

20

21

22

20

21

29

28

21

22

28

27