

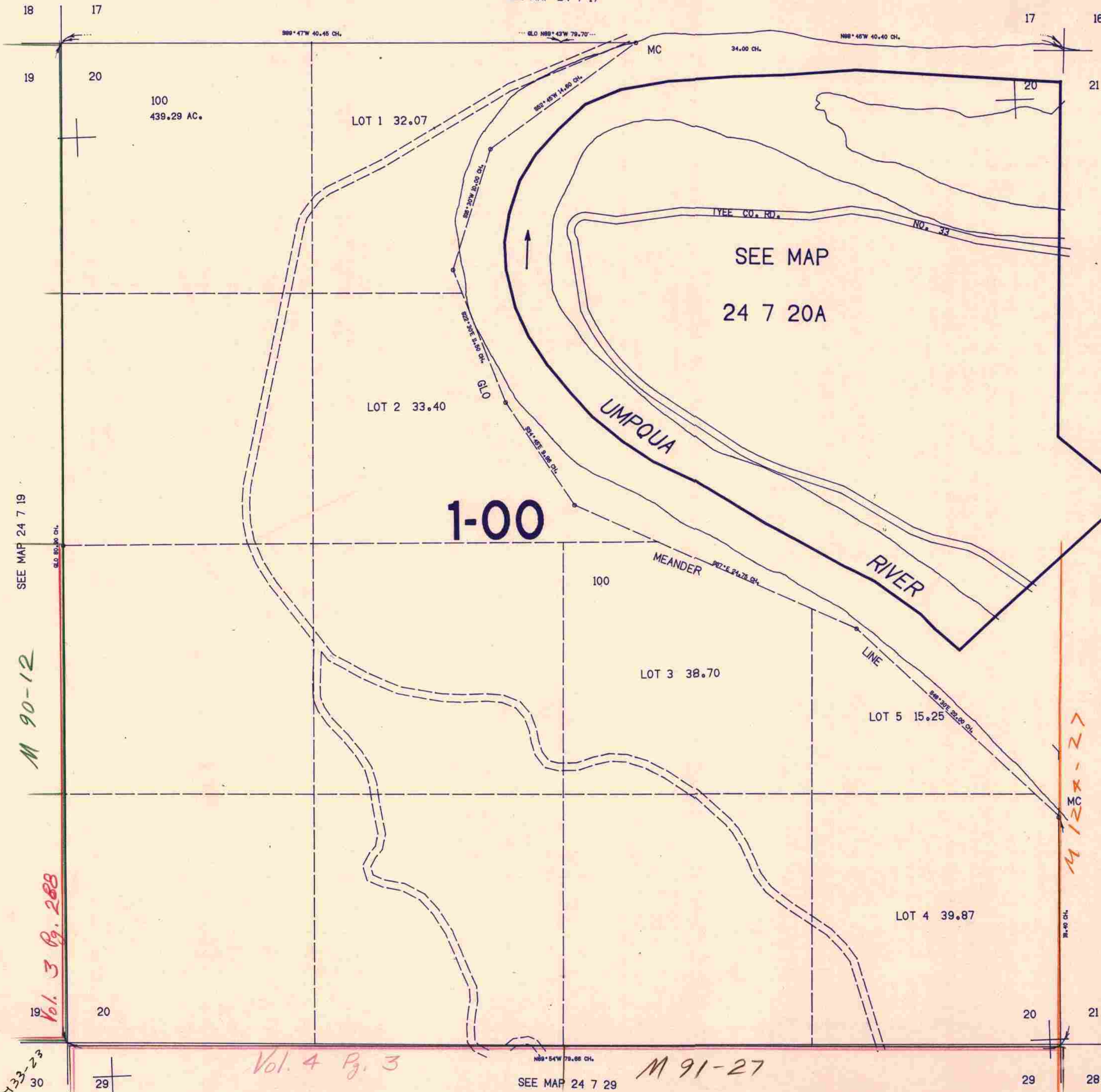
SECTION 20 T.24S. R.7W. W.M.
DOUGLAS COUNTY

24 7 20
& INDEX

THIS MAP WAS PREPARED FOR
ASSESSMENT PURPOSE ONLY.

1"=400'

SEE MAP 24 7 17



SEE MAP 24 7 19

M 90-12

Vol. 3 Pg. 288

M 91-27

Vol. 4 Pg. 3

SEE MAP 24 7 29

M 91-27

SEE MAP 24 7 21

SEE MAP 24 7 21C

1,192,000

669,000

24 7 20
& INDEX

10/82/88