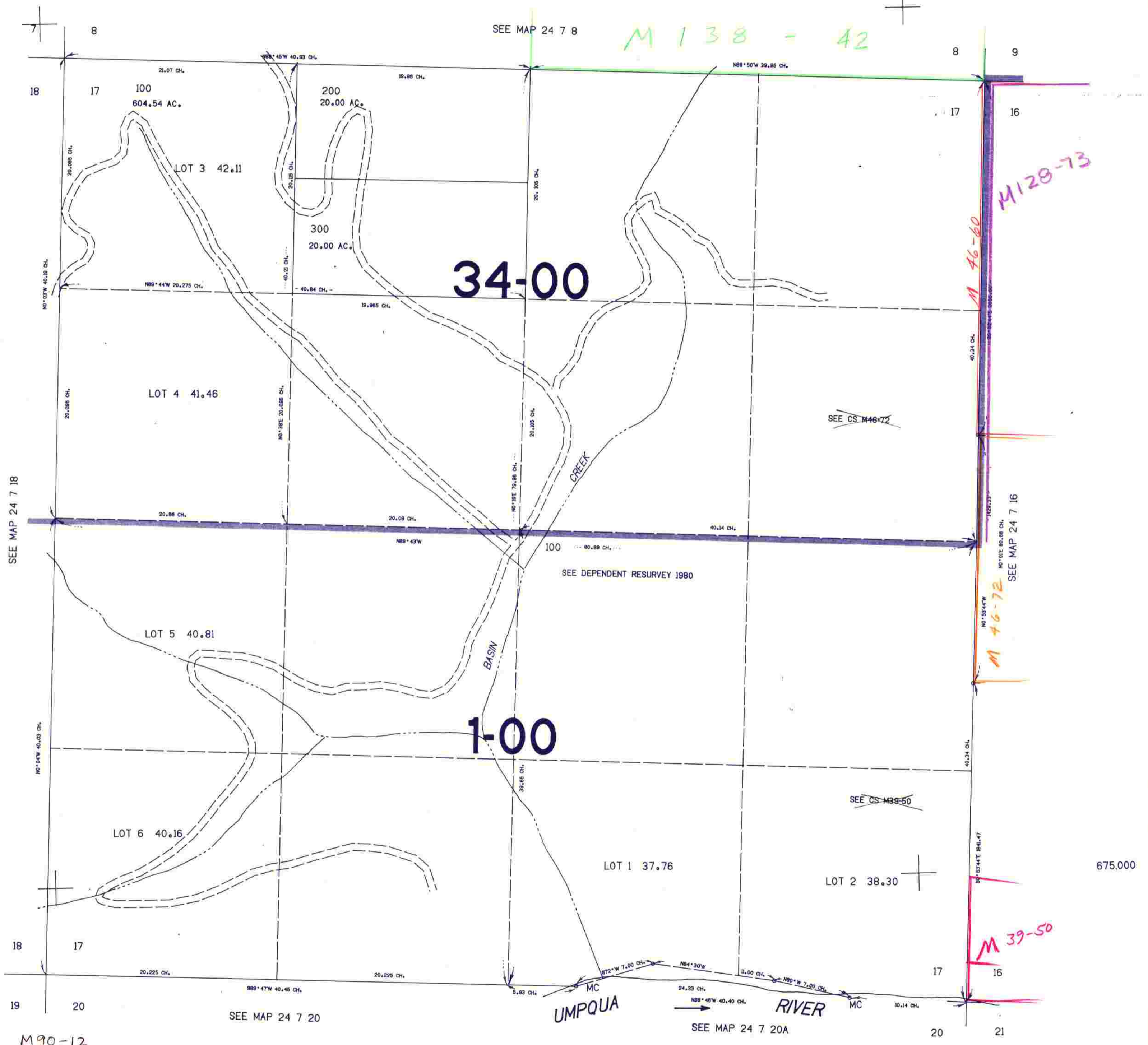


SECTION 17 T.24S. R.7W. W.M.
DOUGLAS COUNTY

24 7 17

THIS MAP WAS PREPARED FOR
ASSESSMENT PURPOSE ONLY.

1"=400'



34-00

1-00

UMPQUA

RIVER

SEE MAP 24 7 18

SEE MAP 24 7 8

SEE MAP 24 7 16

SEE MAP 24 7 20

SEE MAP 24 7 20A

M 90-12

1192.000

24 7 17

10/82