

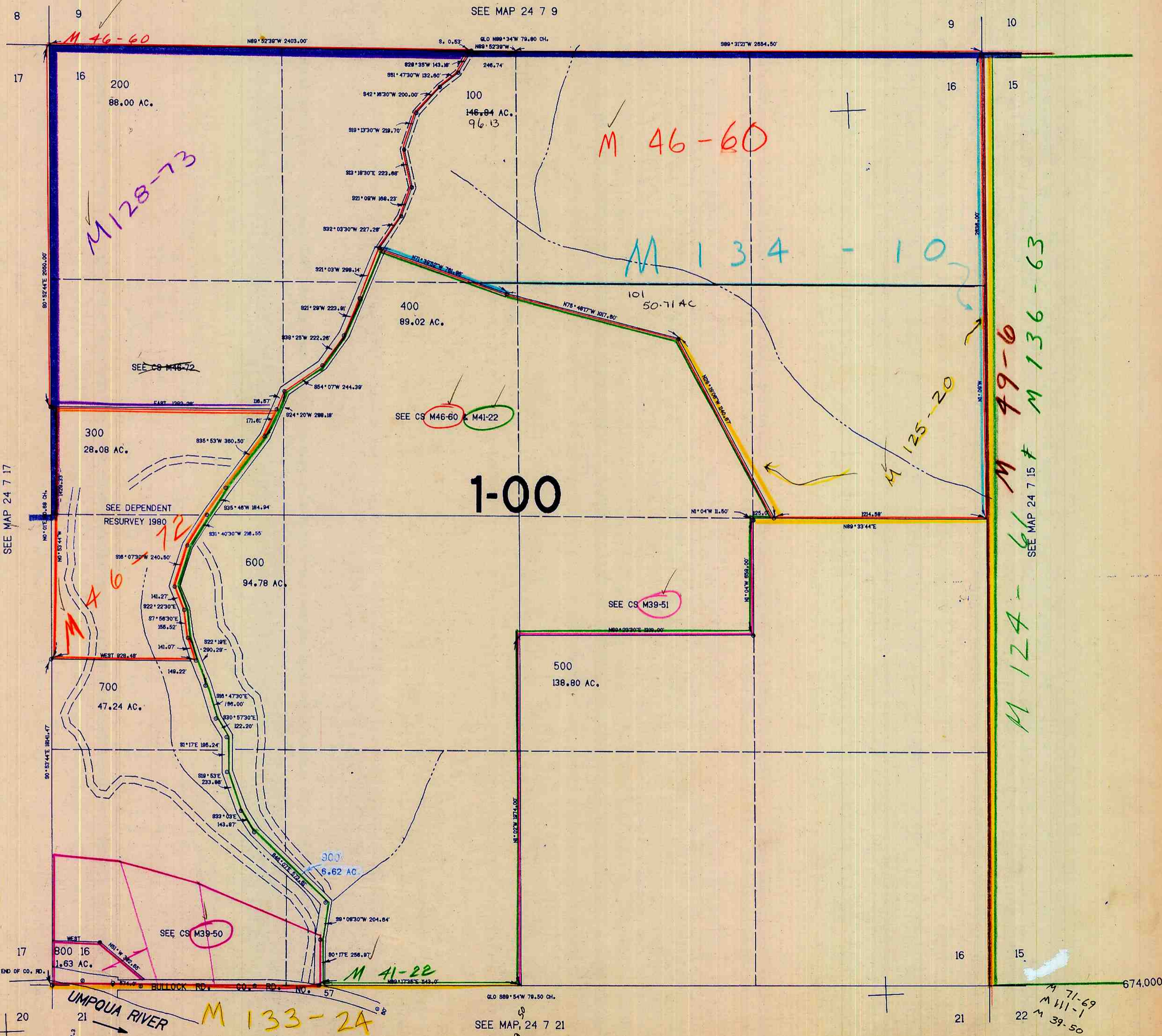
SECTION 16 T.24S. R.7W. W.M.  
DOUGLAS COUNTY

24 7 16

THIS MAP WAS PREPARED FOR  
ASSESSMENT PURPOSE ONLY.

1"=400'

SEE MAP 24 7 9



SEE MAP 24 7 17

1-00

M 49-6  
M 136-63  
SEE MAP 24 7 15

M 124-66

M 71-69  
M 111-1  
M 39-50

SEE MAP, 24 7 21

24 7 16

10/83/88

1197,000