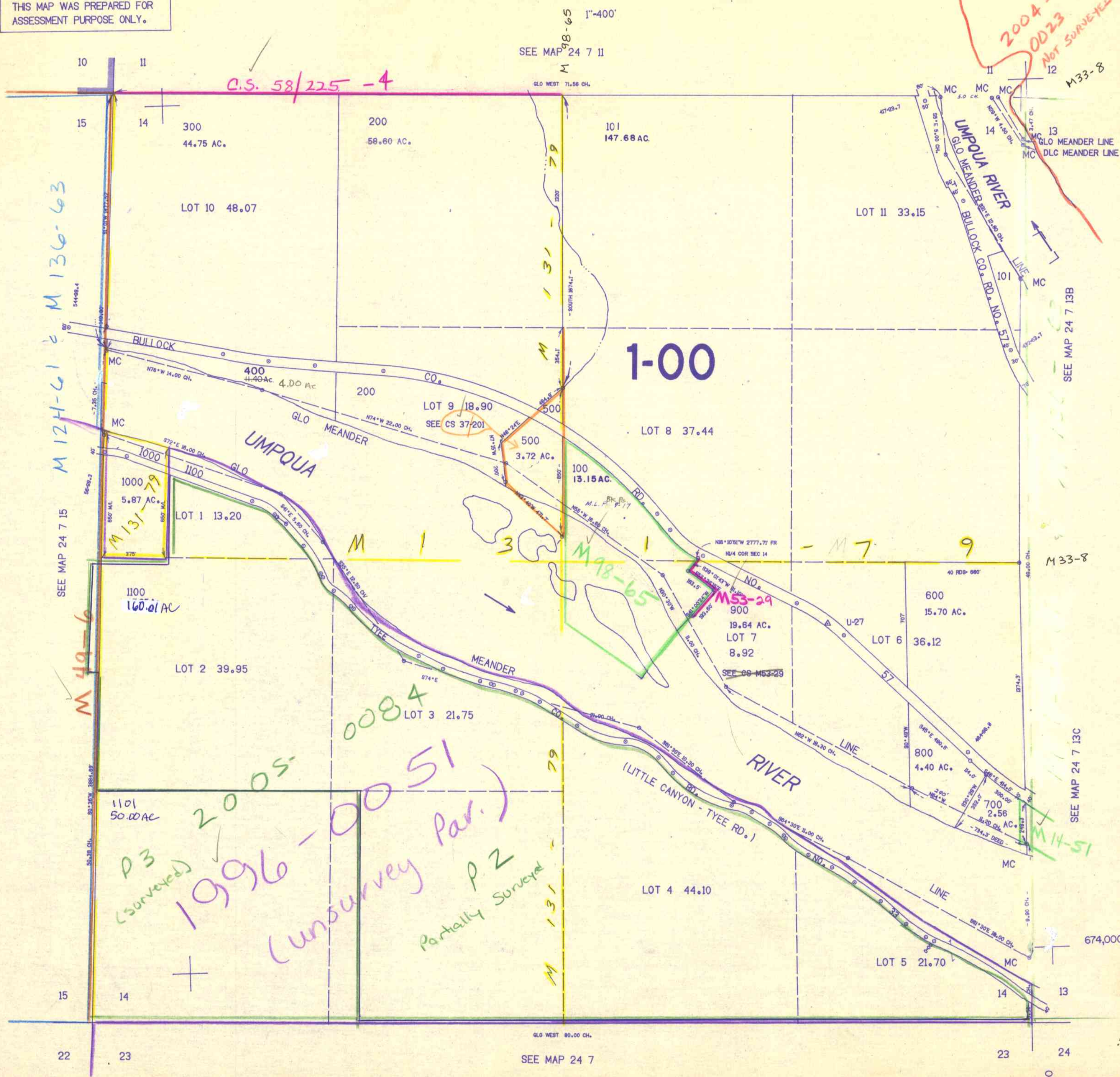


SECTION 14 T.24S. R.7W. W.M.
DOUGLAS COUNTY

24 7 14

THIS MAP WAS PREPARED FOR
ASSESSMENT PURPOSE ONLY.



2004-0023
NOT SURVEYED

M 124-61 & M 136-63

SEE MAP 24 7 15

M 49-6

P3 (surveyed)
1996-0051
(unsurveyed Par.)
P2 Partially Surveyed

1-00

M 7

9

M 53-29

M 98-65

M 14-51

SEE MAP 24 7

1,208,000

24 7 14

2/87 mw