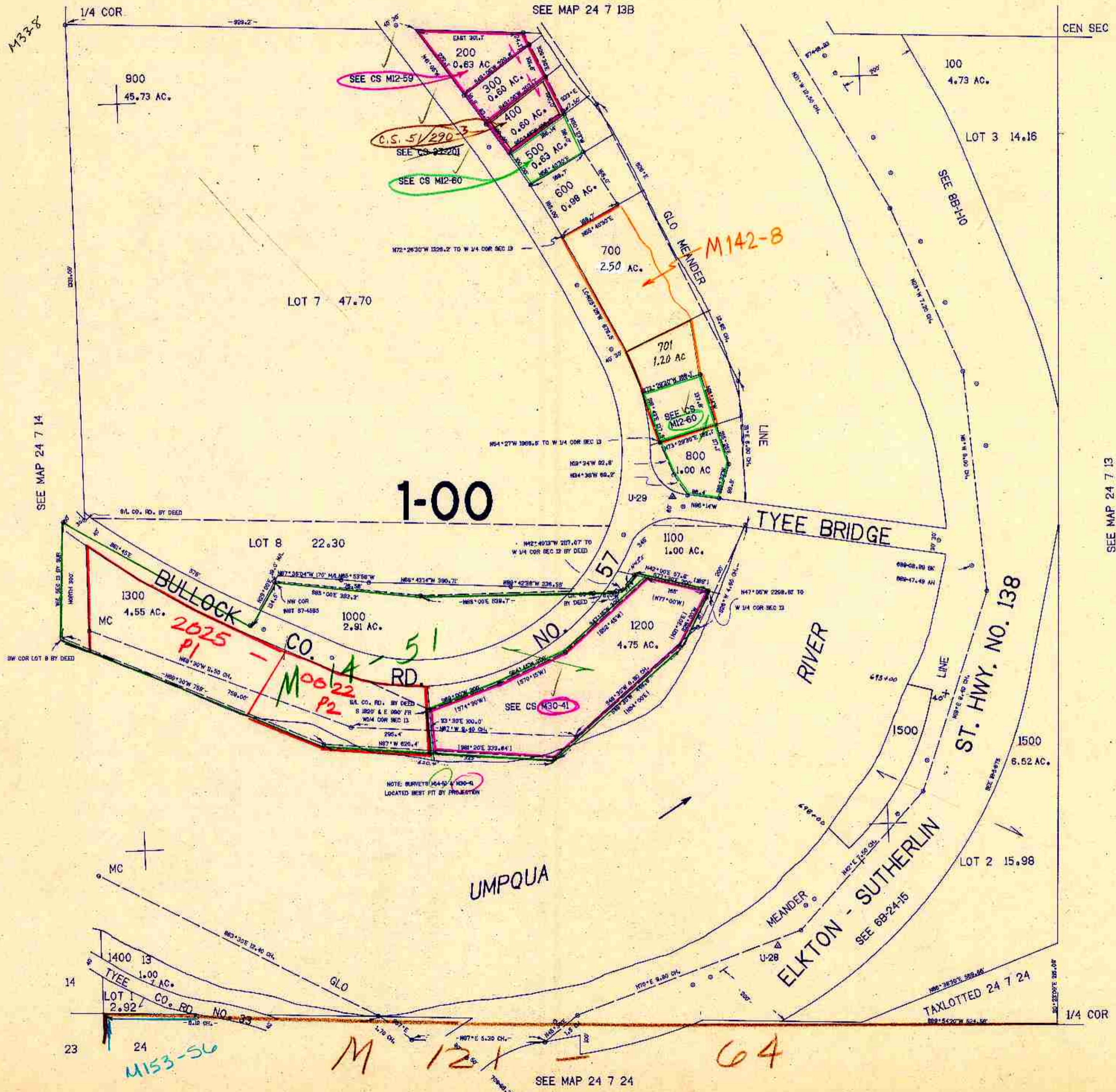


SW1/4 SEC.13 T.24S. R.7W. W.M.
DOUGLAS COUNTY

24 7 13C

THIS MAP WAS PREPARED FOR
ASSESSMENT PURPOSE ONLY.

1"=200'



1-00

M142-8

M153-56

M121-64

674.000

24 7 13C

10/03 BS

1:210,000