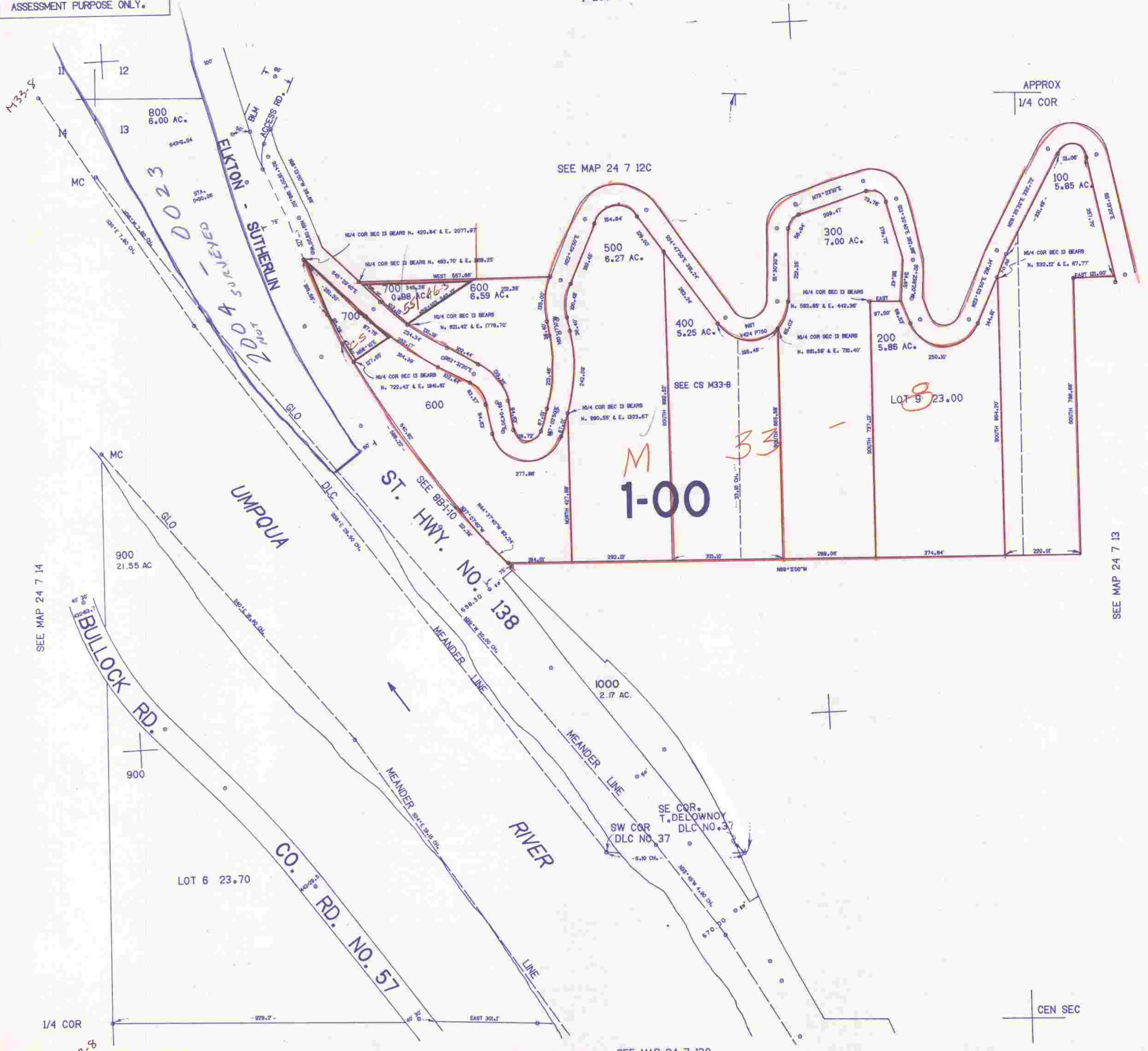


NW1/4 SEC.13 T.24S. R.7W. W.M.
DOUGLAS COUNTY

24 7 13B

THIS MAP WAS PREPARED FOR
ASSESSMENT PURPOSE ONLY.

1"=200'



SEE MAP 24 7 12C

APPROX
1/4 COR

SEE MAP 24 7 14

SEE MAP 24 7 13

677.000

SEE MAP 24 7 13C

1.210.000

24 7 13B

CEN SEC