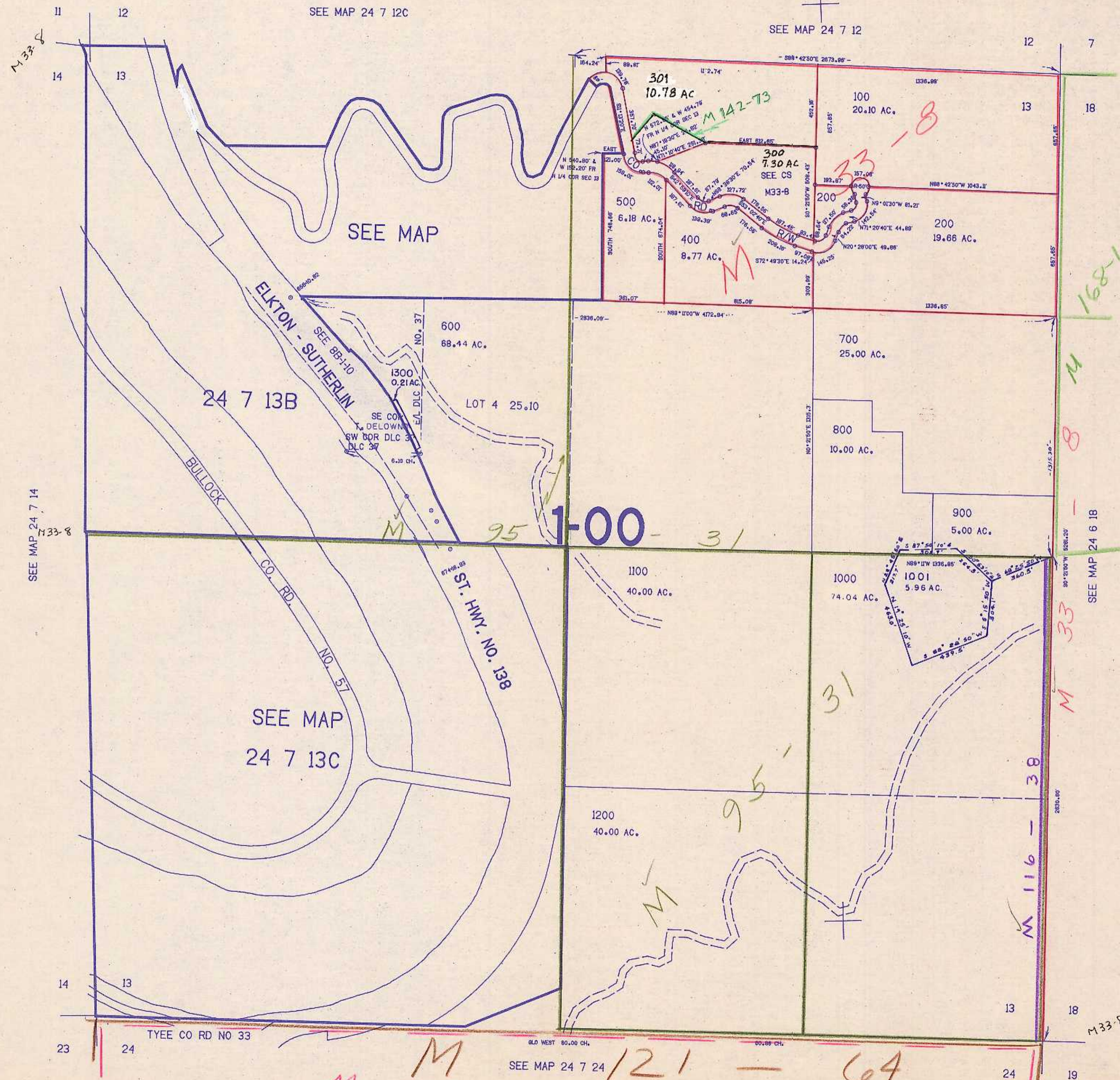


SECTION 13 T.24S. R.7W. W.M.  
DOUGLAS COUNTY

24 7 13  
& INDEX

THIS MAP WAS PREPARED FOR  
ASSESSMENT PURPOSE ONLY.

1"=400'



SEE MAP 24 7 24

121 - 64

M 123 - 6

24 7 13  
& INDEX

212.000

10/20/28