

THIS MAP WAS PREPARED FOR ASSESSMENT PURPOSE ONLY.

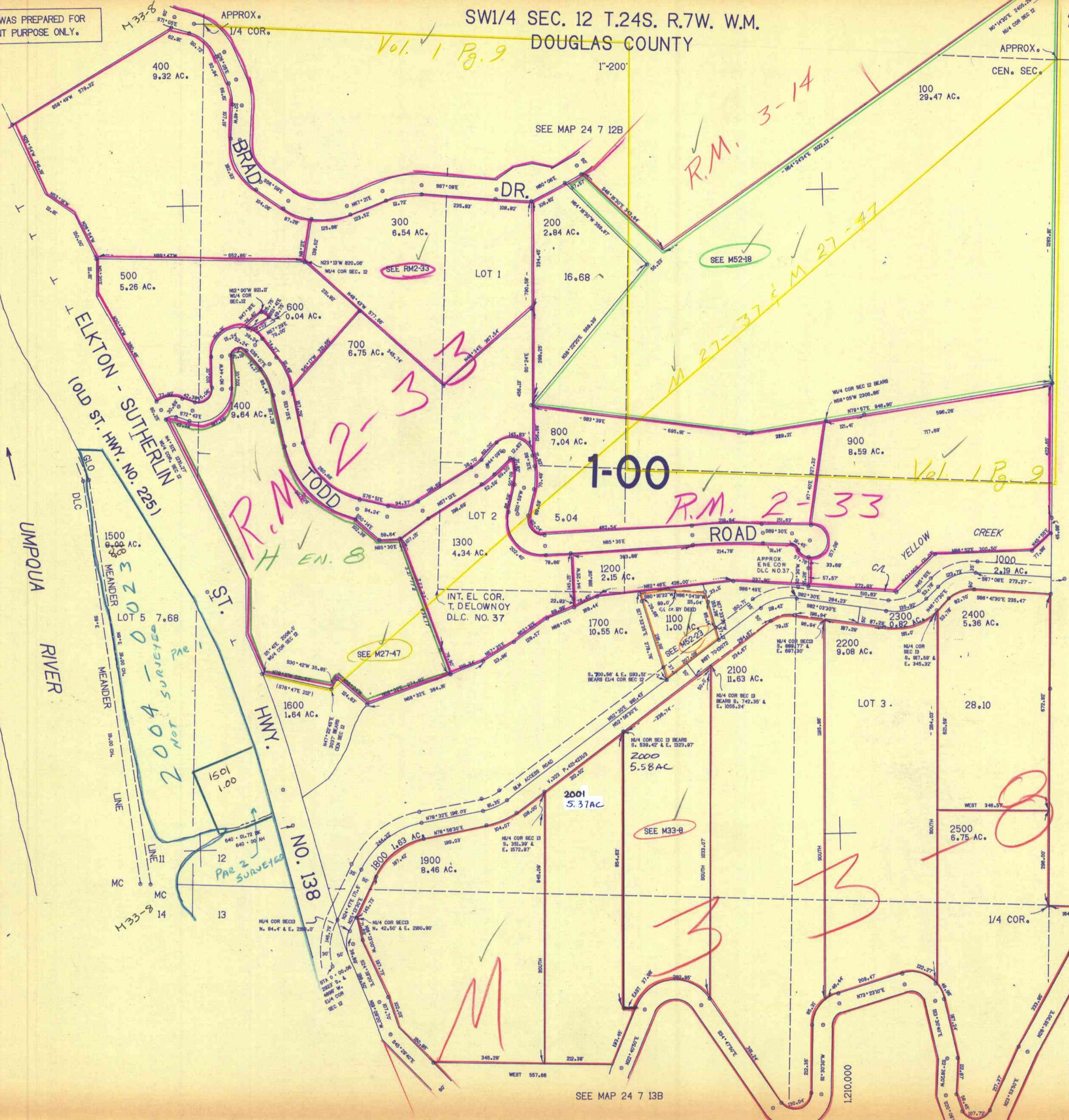
SW1/4 SEC. 12 T.24S. R.7W. W.M. DOUGLAS COUNTY

24 7 12C

SEE MAP 24 7 11

SEE MAP 24 7 12

24 7 12C



Vol. 1 Pg. 9

R.M. 3-14

R.M. 2-33  
H EN. 8

R.M. 2-33

Vol. 1 Pg. 9

2004 SURVEYED  
NOT SURVEYED  
PAR 1

PAR 2 SURVEYED

SEE M33-8

SEE RM2-33

SEE M52-18

SEE M27-47

SEE MAP 24 7 13B

10/83 BS