

THIS MAP WAS PREPARED FOR ASSESSMENT PURPOSE ONLY.

NW1/4 SEC.12 T.24S. R.7W. W.M.
DOUGLAS COUNTY

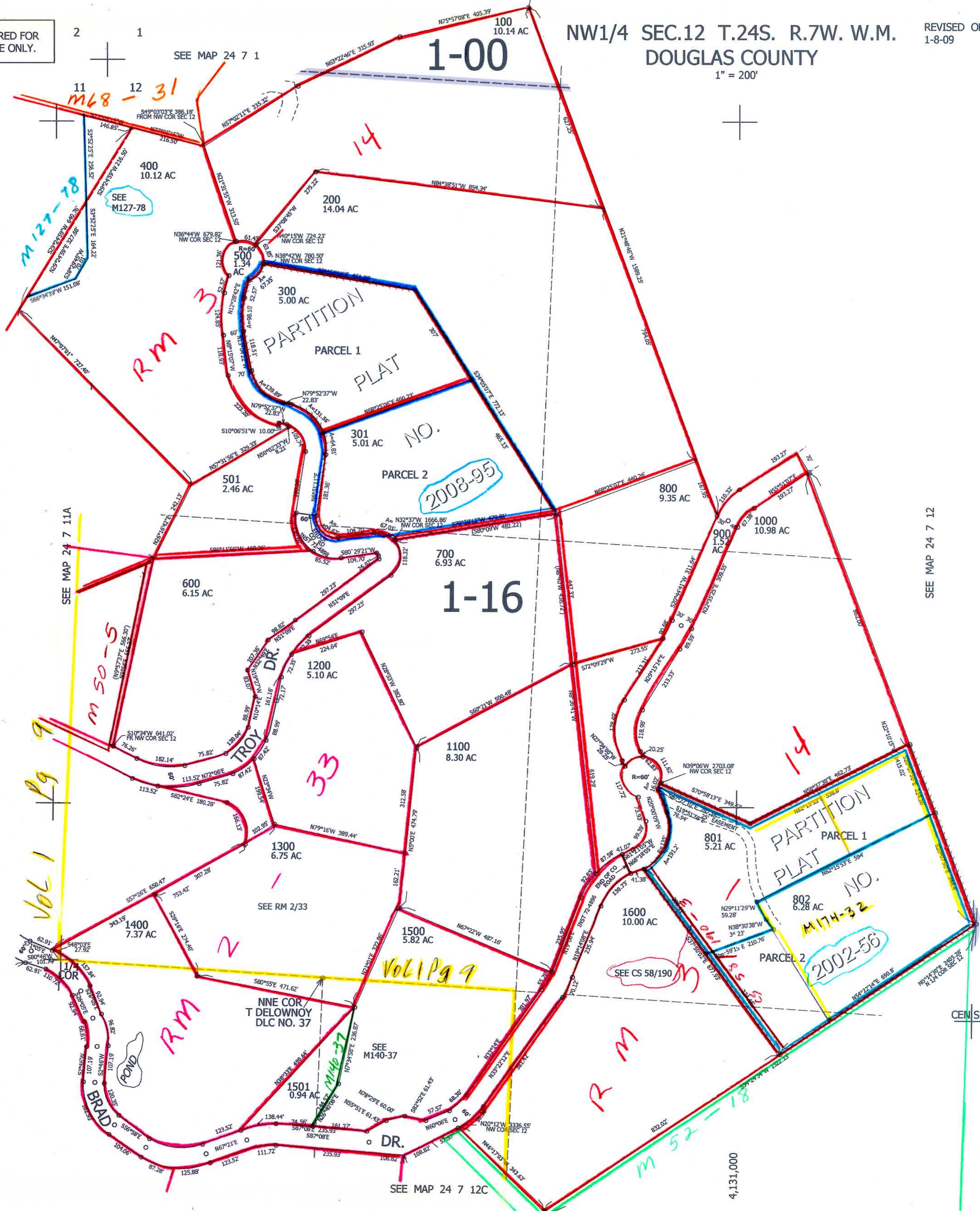
REVISED ON
1-8-09

24 7 12B

1" = 200'

1/4 COR

CANCELLED NOS
502 401



SEE MAP 24 7 11A

SEE MAP 24 7 12

Vol 1 Pg 9

Vol 1 Pg 9

682,000

CEN SEC

am o/p/oa/oa
scr

24 7 12B