

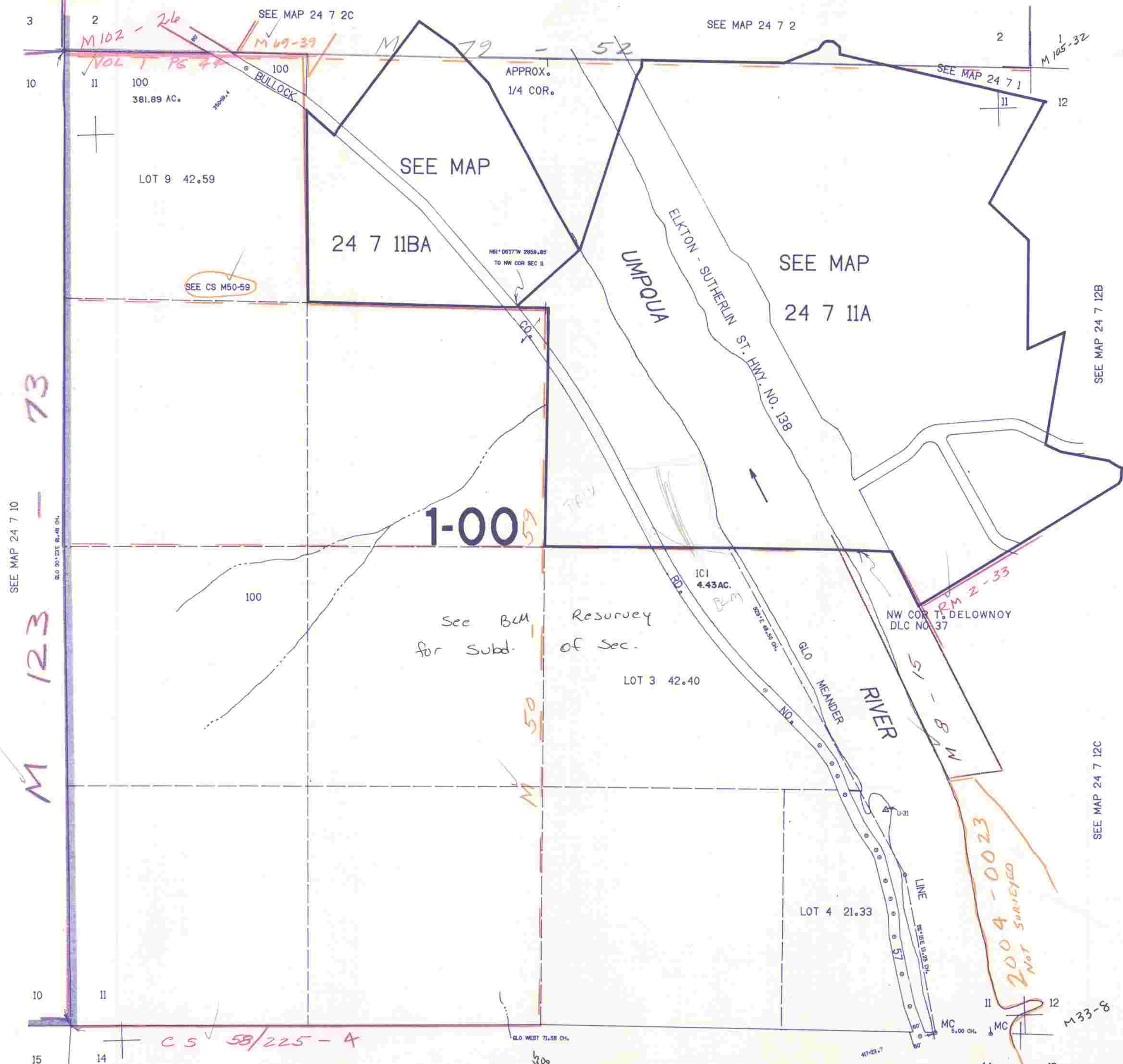
SECTION 11 T.24S. R.7W. W.M.
DOUGLAS COUNTY

24 7 11
& INDEX

REVISED ON
4-3-91

1"=400'

THIS MAP WAS PREPARED FOR
ASSESSMENT PURPOSE ONLY.



SEE MAP 24 7 10

M 123 - 73

M 123

M 123

10

15

2

11

11

11

14

SEE MAP 24 7 2C

SEE MAP 24 7 2

2

M 105-32

SEE MAP 24 7 1

12

APPROX.
1/4 COR.

SEE MAP

24 7 11BA

N81°05'17"W 2858.85'
TO NW COR SEC 11

SEE CS M50-59

SEE MAP

24 7 11A

SEE MAP 24 7 12B

1-00

See BLM
for Subd.
Resurvey
of Sec.

LOT 3 42.40

NW COR T. DELOWNOY
DLC NO. 37

101
4.43 AC.

LOT 4 21.33

SEE MAP 24 7 12C

CS 58/225 - A

SEE MAP 24 7 14

M 33-8

M 33-8

679.000

24 7 11
& INDEX

208.000

4/1/91